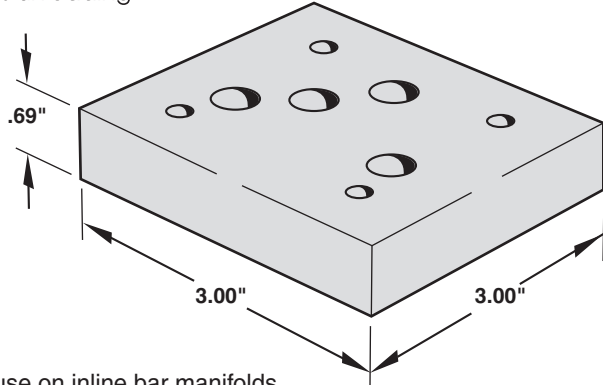
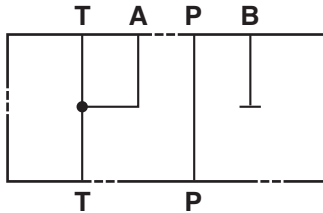


Manifold Accessories

D05 Unloading Module

Application:

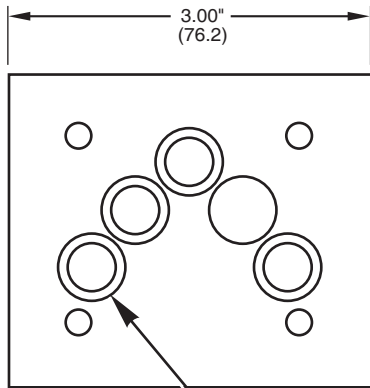
This module allows unloading or venting pump pressure during idle machine cycles. It is mounted between a single solenoid, spring offset directional control valve (NFPA D05 size) and the manifold. When the valve is in the P to A position, this module directs the pump flow back to tank, thus unloading the pump. When the directional control valve is in the P to B position, the B port is blocked and pump flow is directed to other system control valves.



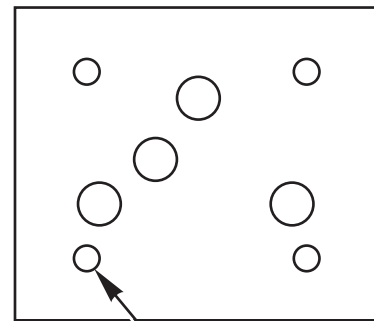
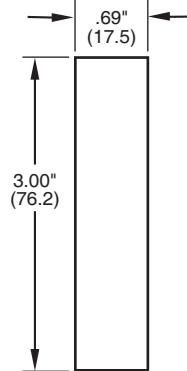
Ideal for use on inline bar manifolds with cartridge relief valve.

Supplied Hardware

O-Rings — Viton (5) 5/8" OD x 1/2" ID x 1/16" CS



Pocket for 5/8" O.D. O'Ring (5) Places



9/32" Dia Thru (4) Places

Part Numbers:

Aluminum	Ductile/Steel
MA-A05ZZ-UM-ZZ-0	MA-S05ZZ-UM-ZZ-0

3

MAGNALOY MANIFOLD ACCESSORY PART NUMBER BREAKDOWN

