

### DIMENSIONS (2.13" VALVE SPACING)

NO. OF STATIONS	C	L	E	F
1 <sup>1</sup>	--	2.13"	N.A.	--
1 <sup>2</sup>	--	3.00"	N.A.	--
2	2.13"	4.25"	2.13"	--
3	2.13"	6.38"	4.25"	--
4	2.13"	8.50"	6.38"	--
5	2.13"	10.63"	8.50"	4.25"
6	2.13"	12.75"	10.63"	4.25"
7	2.13"	14.88"	12.75"	4.25"X 2
8	2.13"	17.00"	14.88"	4.25"X 2
9	2.13"	19.38"	17.00"	6.38"X 2
10	2.13"	21.25"	19.38"	6.38"X 2
11	2.13"	23.38"	21.25"	6.38"X 2
12	2.13"	25.50"	23.38"	6.38"X 3
13	2.13"	27.63"	25.50"	6.38"X 2
14	2.13"	29.75"	27.63"	6.38"X 3

**NOTE:** 1 - Single Station - No Gauge Port  
 2 - Single Station with C or S Option, includes Gauge Port

### FEATURES AND ADVANTAGES

- \* Available with SAE, NPT, BSPP, BSPT or Metric Threads to cover a wide range of applications.
- \* 2 1/8" or 4" valve center options allow the manifold to be sized for specific D03 valve types.
- \* Adequate clearance for 5/8" tube fittings.
- \* Mounting bolt spacing allows standardized mounting pads.
- \* Tank and pressure lines may be connected at either end.
- \* Standard Gauge Port is 1/4" NPT with "P" Code and #6 SAE with "S" Code (#4 SEA available with G4 Option.)

### DIMENSIONS (4.00" VALVE SPACING)

NO. OF STATIONS	C	L	E	F
2	4.00"	6.13"	4.00"	
3	4.00"	10.13"	8.00"	
4	4.00"	14.13"	12.00"	8.00"
5	4.00"	18.13"	16.00"	8.00"
6	4.00"	22.13"	20.00"	8.00" X 2
7	4.00"	26.13"	24.00"	8.00" X 2

## MAGNALOY D03 PARALLEL BAR MANIFOLD PART NUMBER BREAKDOWN

**B M R - A S P 0 3 S 2 - 0 1 - 1 / B**

Product Code  
 BMR-Inline Bar Manifold  
 Retro Design

Material Code  
 A - Aluminum  
 S - Steel

Circuit Code  
 SP - Standard Flow Parallel Circuit

NFPA Pattern Code  
 03 - D03

Thread Code  
 P - NPTF Pipe  
 S - SAE O'Ring  
 B - BSPP British Parallel  
 T - BSPT British Taper  
 M - Metric ISO 6149  
 (See Port Size Chart for Standard Port Sizes)

Options  
 Z - No Option  
 B - Bottom PR-TK Ports  
 C - Relief Valve Cavity C-10-2  
 G4 - Gauge Port #4 SAE  
 S - Relief Valve Cavity Sun T-10A  
 M - Soft Metric Threading (See Note 3, page 34)  
 I - Isolation Plug<sup>1</sup> - Consult Factory  
 List as last option designated  
 (See Note 1, page 34)

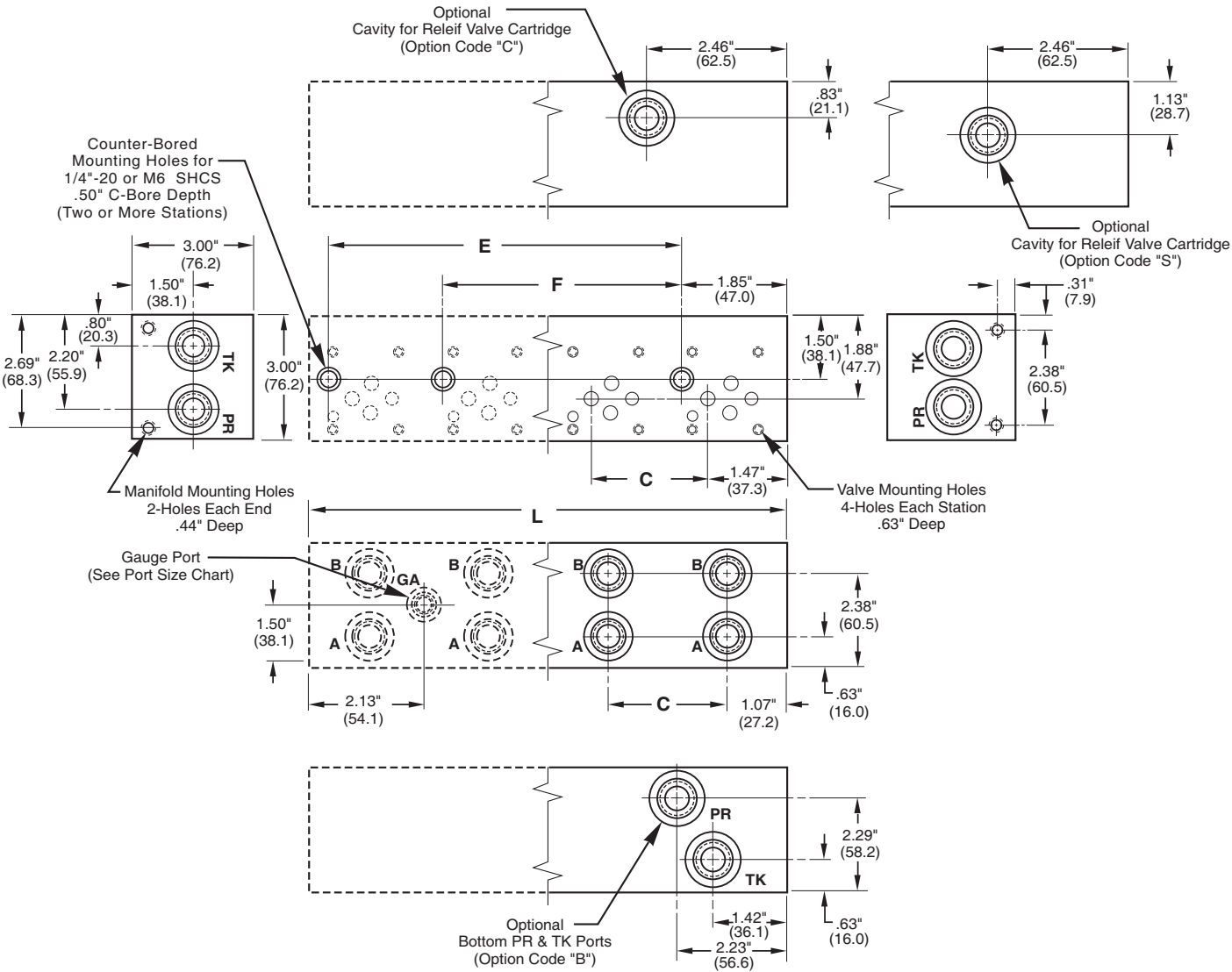
Design Series

Number of Valve Stations  
 02 - 2 stations  
 03 - 3 stations  
 etc.

Valve Spacing Code  
 2 - 2.13"  
 4 - 4.00"

# Inline Bar Manifold

## D03 Retro Design Bar Manifold - Parallel



3

### PORT SIZE CHART

THREAD CODE	PR	TK	A & B	OPTIONAL GAUGE PORTS	MOUNTING HOLES	
					VALVE	MANIFOLD
P	1/2" NPT	1/2" NPT	3/8" NPT	1/4" NPT	10 - 24 UNC	5/16 - 18 UNC
S	#10 SAE	#10 SAE	#8 SAE	#4 SAE G6 - #6 SAE	10 - 24 UNC	5/16 - 18 UNC
B	1/2" BSPP	1/2" BSPP	3/8" BSPP	-	M5 - .8	M8 - 1.25
T	1/2" BSPT	1/2" BSPT	3/8" BSPT	-	M5 - .8	M8 - 1.25
M	M22	M22	M18	-	M5 - .8	M8 - 1.25

**NOTE:** For End Mounting Bracket Kit (BKR-A03) dimensions, see Reference Section, page 174.