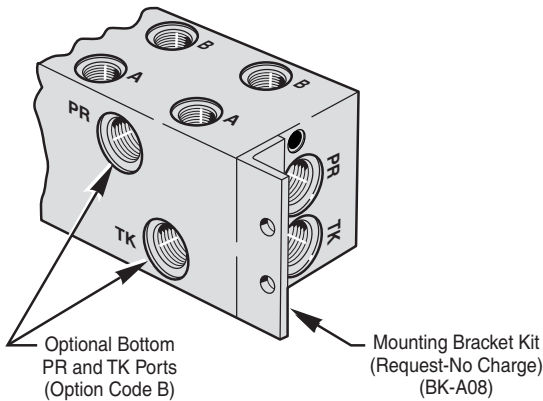


Features & Advantages

- + Available with SAE, NPT, BSPP, BSPT or Metric Threads to cover a wide range of applications.
- + Large pressure and tank passage for maximum flow capacity.
- + Common pilot drain connection.
- + Standard end mount and through holes. Mounting Bracket kit BK-A08 is supplied (no charge) as an alternate end mounting style.
- + Options include relief valve cavities, bottom PR & TK ports, and gauge port and PR & TK isolation.

3

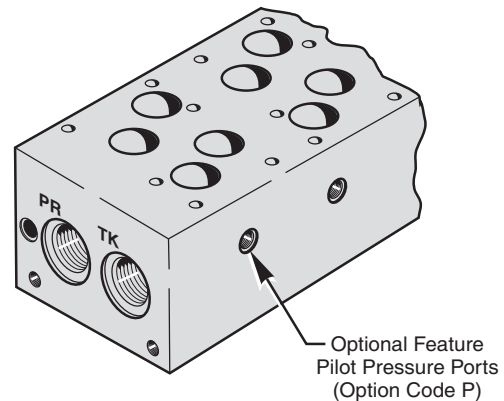
Standard Mounting Bracket Kit



Optional Bottom PR and TK Ports (Option Code B)

Mounting Bracket Kit (Request-No Charge) (BK-A08)

Optional Pilot Pressure Ports



Optional Feature Pilot Pressure Ports (Option Code P)

MAGNALOY D08 PARALLEL BAR MANIFOLD PART NUMBER BREAKDOWN

B M - A S P 0 8 P 5 - 0 2 - 0 / B

Product Code
BM-Inline Bar Manifold

Material Code
A - Aluminum
S - Ductile/Steel

Circuit Code
SP - Standard Flow Parallel Circuit

NFPA Pattern Code
08 - D08

Thread Code
P - NPTF Pipe
S - SAE O'Ring
B - BSPP British Parallel
T - BSPT British Taper
M - Metric ISO 6149

(See Port Chart for Standard Port Sizes)

Options

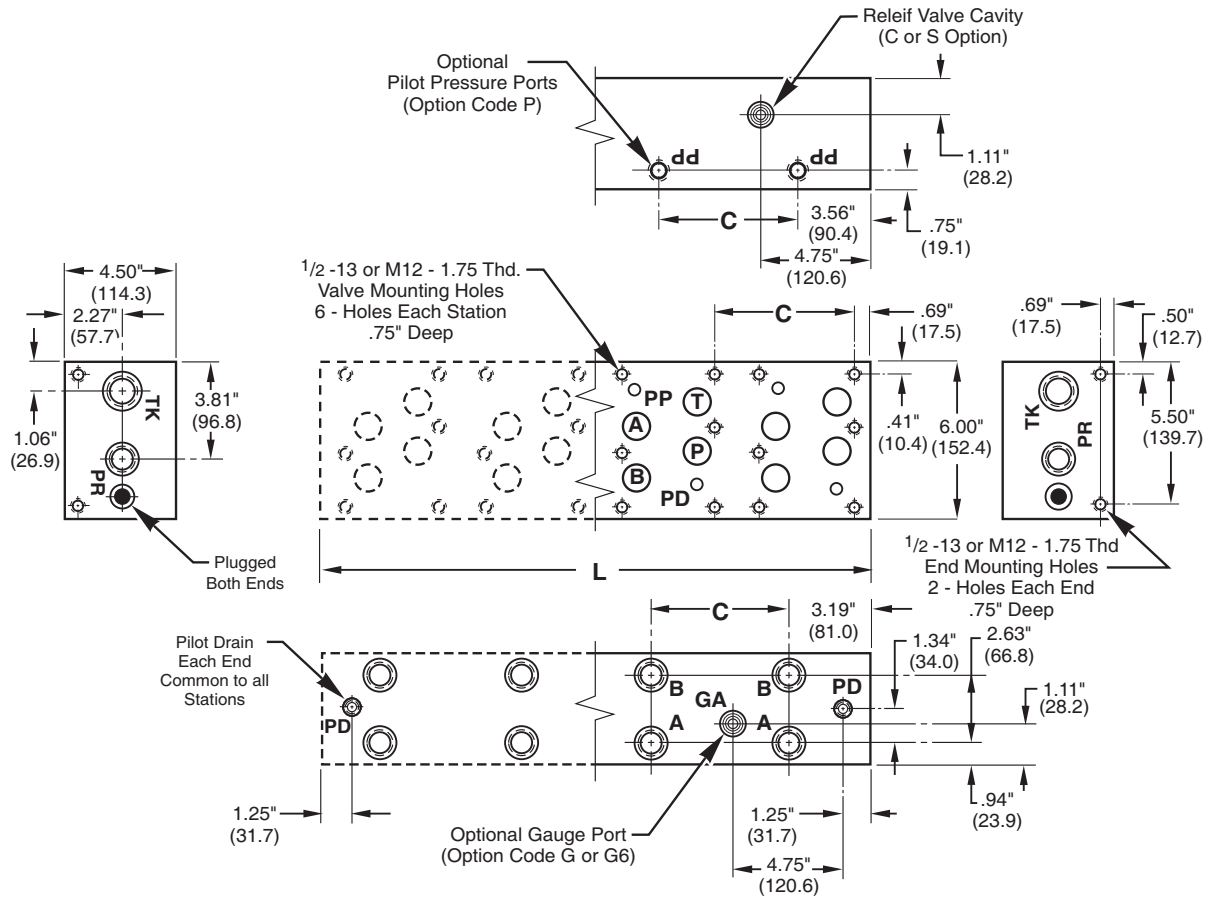
- Z - No Option
- B - Bottom PR-TK Ports
- C - Relief Valve Cavity C-10-2
- G - Gauge Port #4 SAE or 1/4 NPTF
- G6 - Gauge Port #6 SAE
- P - Pilot Pressures (Individual Per Station)
- S - Relief Valve Cavity Sun T-3A
- H - Hard Metric Threading (See Note 2, page 34)
- M - Soft Metric Threading (See Note 3, page 34)
- I - Isolation Plug¹ - List as last option designated (See Note 1, page 34)

Design Series

- Number of Valve Stations
- 01 - 1 station
- 02 - 2 stations
- etc.

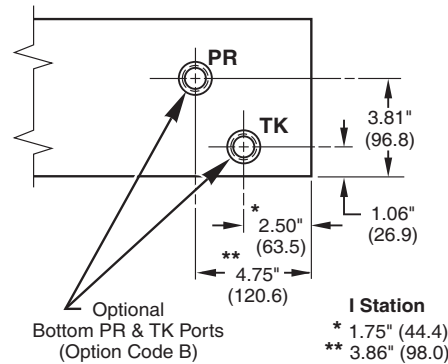
- Valve Spacing Code
- 5 - 5.25"
- 7 - 7.00"

Inline Bar Manifold D08 Bar Manifold - Parallel



| No. of Stations | C | | L | |
|-----------------|---------------|-------|---------------|--------|
| | Valve Spacing | | Valve Spacing | |
| | 5.25" | 7.00" | 5.25" | 7.00" |
| 1 | -- | -- | 5.56" | -- |
| 2 | 5.25" | 7.00" | 10.81" | 12.56" |
| 3 | 5.25" | 7.00" | 16.06" | 19.56" |
| 4 | 5.25" | 7.00" | 21.31" | 26.56" |
| 5 | 5.25" | 7.00" | 26.56" | -- |
| 6 | 5.25" | 7.00" | 31.81" | -- |

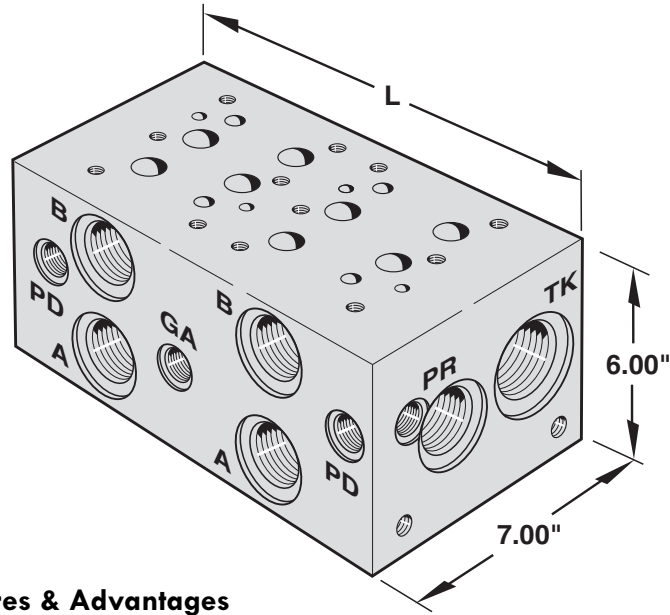
Additional stations available, consult factory.



Port Size Chart

| Thread Code | PR | TK | A & B | PD & Pilot Pressure Ports | Optional Gauge Port |
|-------------|---------|-------------|---------|---------------------------|-----------------------|
| P | 1" NPT | 1 1/4" NPT | 1" NPT | 3/8" NPT | 1/4" NPT |
| S | #16 SAE | #20 SAE | #16 SAE | #6 SAE | #4 SAE G6 - #6 SAE |
| B | 1" BSPP | 1 1/4" BSPP | 1" BSPP | 3/8" BSPP | - |
| T | 1" BSPT | 1 1/4" BSPT | 1" BSPT | 3/8" BSPT | - |
| M | M33 | M42 | M33 | M14 | - |

NOTE: For Mounting Bracket Kit (BK-A08) dimensions, see Reference Section, page 174



Features & Advantages

- 3** + The high flow design provides maximum flow rates with minimum pressure drops.
- + 5 1/4" or 7" valve center option allow the manifold to be sized for specific D08 valve types.
- + Standard end mounting holes make mounting easy and flexible. Also, a mounting bracket kit (BKR-A08) is supplied with the manifold.
- + Available with SAE, NPT, BSPP, BSPT or Metric Threads to cover a wide range of applications.
- + Options include relief valve cavity, bottom PR & TK ports, and 'PR' isolation to fit specific circuit requirements.
- + Standard Gauge Port is 1/4" NPT with "P" code and #6 SAE with "S" Code (#4 SAE available with G4 option).

Dimensions (5.25" Valve Spacing)

| No. of Stations | C | L |
|-----------------|-------|--------|
| 1 | -- | 6.25" |
| 2 | 5.25" | 11.50" |
| 3 | 5.25" | 16.75" |
| 4 | 5.25" | 22.00" |
| 5 | 5.25" | 27.25" |
| 6 | 5.25" | 32.50" |

Dimensions (7.00" Valve Spacing)

| No. of Stations | C | L |
|-----------------|-------|--------|
| 2 | 7.00" | 13.25" |
| 3 | 7.00" | 20.25" |
| 4 | 7.00" | 27.25" |
| 5 | 7.00" | 34.25" |

MAGNALOY D08 PARALLEL BAR MANIFOLD PART NUMBER BREAKDOWN

B M R - A H P 0 8 P 7 - 0 2 - 1 / B

Product Code
BMR-Inline Bar Manifold
Retro Design

Material Code
A - Aluminum
S - Ductile/Steel

Circuit Code
HP- High Flow Parallel Circuit

NFPA Pattern Code
08 - D08

Thread Code
P - NPTF Pipe
S - SAE O'Ring
B - BSPP British Parallel
T - BSPT British Taper
M - Metric ISO 6149

(See Port Chart for Standard Port Sizes)

Options

- Z - No Option
- B - Bottom PR-TK Ports
- C - Relief Valve Cavity C-16-2
- G4 - Gauge Port #4 SAE
- P - Pilot Pressures (Individual Per Valve)
- S - Relief Valve Cavity Sun T-16A
- M - Soft Metric Threading (See Note 3, page 34)
- I - Isolation Plug¹ - Consult Factory for Port Isolation Option Availability.

(See Note 1, page 34 and Reference Section page 173)

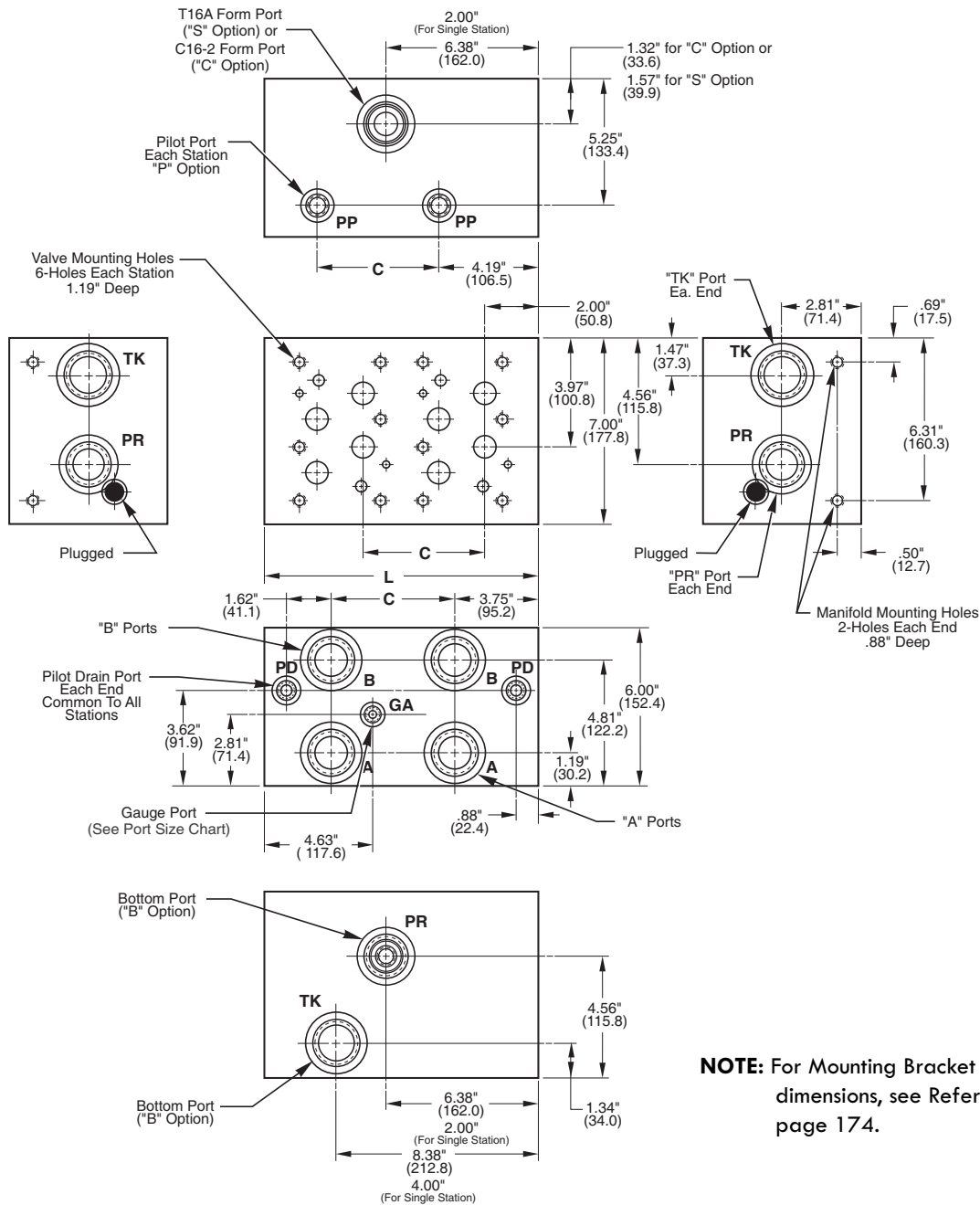
Design Series

- Number of Valve Stations
- 01 - 1 station
- 02 - 2 stations
- etc.

- Valve Spacing Code
- 5 - 5.25"
- 7 - 7.00"

Inline Bar Manifold

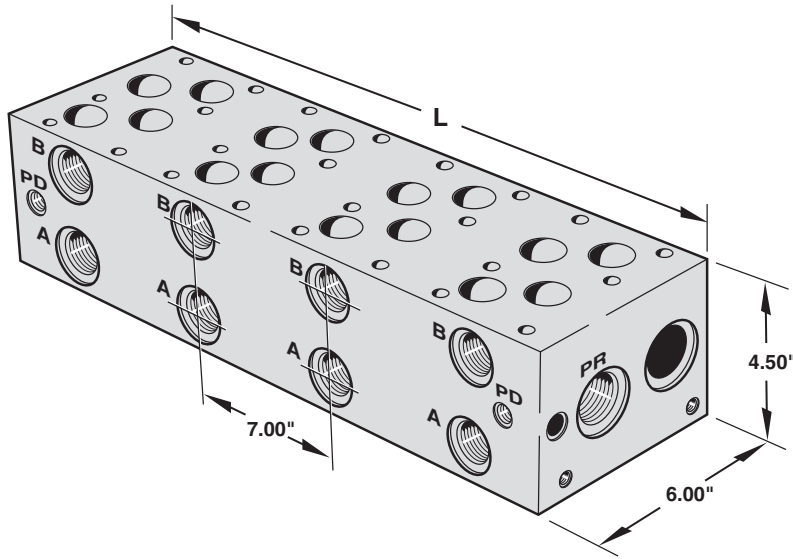
D08 High Flow Retro Design Bar Manifold - Parallel



NOTE: For Mounting Bracket Kit (BKR-A08) dimensions, see Reference Section, page 174.

Port Size Chart

| Thread Code | PR | TK | A & B | Pilots | | Gauge Port | Mounting Holes | |
|-------------|-------------|-------------|-------------|-----------|-----------|-----------------------|----------------|------------|
| | | | | PD | PP | | Valve | Manifold |
| P | 1 1/4" NPT | 1 1/2" NPT | 1 1/4" NPT | 1/2" NPT | 1/4" NPT | 1/4" NPT | 1/2-13 UNC | 1/2-13 UNC |
| S | #20 SAE | #24 SAE | #20 SAE | #8 SAE | #4 SAE | G4 - #4 SAE #6 SAE | 1/2-13 UNC | 1/2-13 UNC |
| B | 1 1/4" BSPP | 1 1/2" BSPP | 1 1/4" BSPP | 1/2" BSPP | 1/4" BSPP | - | M12-1.75 | M12-1.75 |
| T | 1 1/4" BSPT | 1 1/2" BSPT | 1 1/4" BSPT | 1/2" BSPT | 1/4" BSPT | - | M12-1.75 | M12-1.75 |
| M | M42 x 2 | M48 x 2 | M42 x 2 | M16 x 1.5 | M10 x 1.0 | - | M12-1.75 | M12-1.75 |

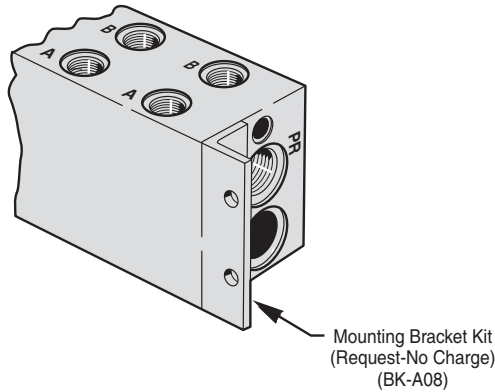


Features & Advantages

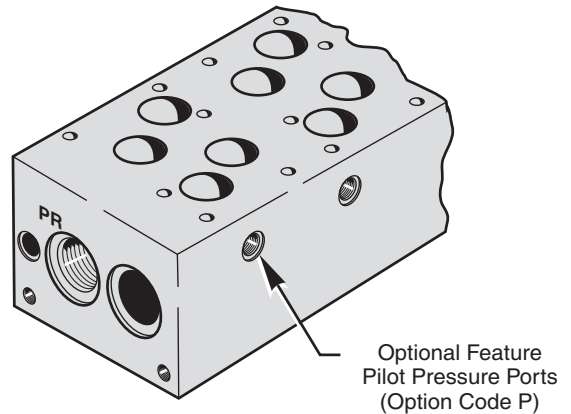
- * Available with SAE, NPT, BSPP, BSPT or Metric Threads to cover a wide range of applications.
- * Large pressure and tank passages for maximum flow capacity.
- * Common pilot drain connections.
- * Standard end mounting holes make mounting easy and flexible. Also, a mounting bracket kit (BK-A08) is supplied (when requested) as an alternate end mounting style.

3

Standard Mounting Bracket Kit



Optional Pilot Pressure Ports



MAGNALOY D08 SERIES BAR MANIFOLD PART NUMBER BREAKDOWN

B M - A S S 0 8 P 7 - 0 2 - 0 / P

Product Code
BM-Inline Bar Manifold

Material Code
A - Aluminum
S - Ductile/Steel

Circuit Code
SS - Series Circuit

NFPA Pattern Code
08 - D08

Thread Code
P - NPTF Pipe
S - SAE O'Ring
B - BSPP British Parallel
T - BSPT British Taper
M - Metric ISO 6149

(See Port Chart for Standard Port Sizes)

Options

- Z - No Option
- G - Gauge Port #4 SAE or 1/4 NPTF
- G6 - Gauge Port #6 SAE
- P - Pilot Pressures (Individual Per Valve)
- H - Hard Metric Threading (See Note 2, page 34)
- M - Soft Metric Threading (See Note 3, page 34)

Design Series

Number of Valve Stations
02 - 2 stations
03 - 3 stations
etc.

Valve Spacing Code
7 - 7.00" Only

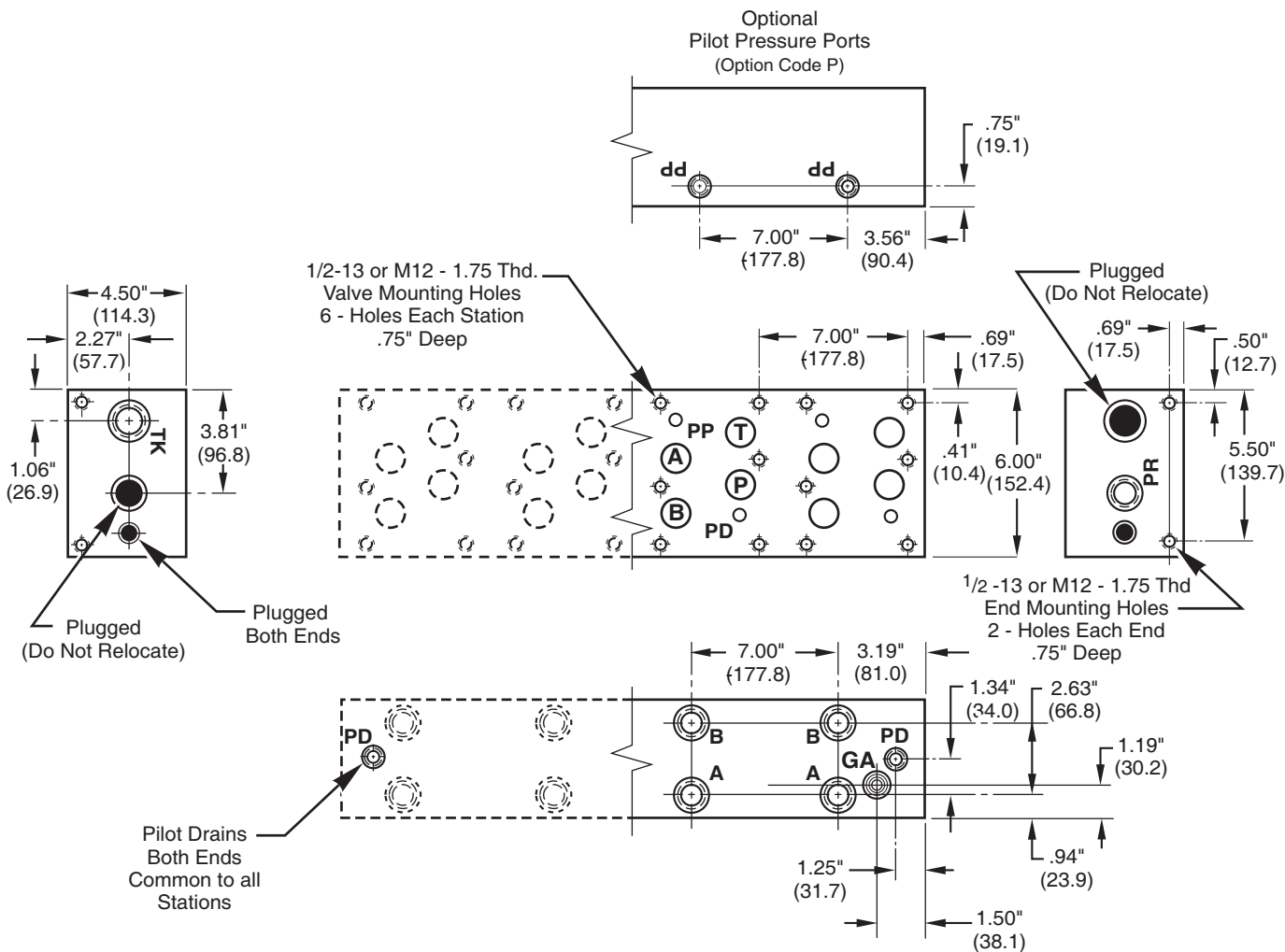
Inline Bar Manifold

D08 Bar Manifold - Series

| Length (L) 7.00" Spacing Only | | | |
|-------------------------------|--------|--------|--------|
| No. of Stations | 2 | 3 | 4 |
| Valve Center Spacing | 12.56" | 19.56" | 26.56" |

Note: Relief Cavities and Gauge Port not available in standard D08 Series Manifolds

Additional stations available, consult factory.



Port Size Chart

| Thread Code | PR | TK | A & B | PD & Pilot Pressure Ports | Optional Gauge Port |
|-------------|---------|-------------|---------|---------------------------|-----------------------|
| P | 1" NPT | 1 1/4" NPT | 1" NPT | 3/8" NPT | 1/4" NPT |
| S | #16 SAE | #20 SAE | #16 SAE | #6 SAE | #4 SAE G6 - #6 SAE |
| B | 1" BSPP | 1 1/4" BSPP | 1" BSPP | 3/8" BSPP | - |
| T | 1" BSPT | 1 1/4" BSPT | 1" BSPT | 3/8" BSPT | - |
| M | M33 | M42 | M33 | M14 | - |

NOTE: For Mounting Bracket Kit (BK-A08) dimensions, see Reference Section, page 174.