



LIST PRICES
 Effective January 1, 2009
 Subject to change
 upon notice
 Rev 3/26/09

**Flexible Drive Couplings PM 90 Couplings Pump/Motor Mounts
 Hydraulic Manifolds & Manifold Accessories
 Reservoirs Reservoir Accessories Rod End Alignment Couplers Price List**



Full Product/Price Index
 On Inside Coveri

PREMIUM FLEXIBLE
 DRIVE COUPLINGS ...1,2

PM 90 COUPLINGS3

PUMP/MOTOR
 MOUNTS4-7

BAR MANIFOLDS ...8-15

INTEGRATED CIRCUIT
 BAR MANIFOLDS16

SUBPLATES17-19

COVER PLATES19

VALVE ADAPTORS20

ISOLATION PLUGS20

MANIFOLD
 ACCESSORIES21

HEADER BAR
 MANIFOLDS22-24

JUNCTION BAR
 MANIFOLDS25-27

RESERVOIRS28-31

RESERVOIR
 ACCESSORIES32-40

ROD END ALIGNMENT
 COUPLERS40



PREMIUM FLEXIBLE DRIVE COUPLINGS
 Coupling Hubs and Inserts1

PM 90 FLEXIBLE DRIVE COUPLINGS
 Coupling Hubs and Inserts3

PUMP/MOTOR MOUNTS
 Horizontal Aluminum Pump/Motor Mounts4
 Vertical Aluminum Pump/Motor Mounts4
 Aluminum Pump/Engine Mounts5
 Welded Steel Horizontal Pump/Motor Mounts6
 Welded Steel Vertical Pump/Motor Mounts6
 Welded Steel Pump/Engine Mounts7
 Service Window Covers7

BAR MANIFOLDS
 D03 High Flow Parallel8
 D03 Standard Flow Series8
 D03 Standard Flow Retro Design Parallel9
 D03 High Flow Retro Design Parallel10
 D05 Standard Flow Parallel11
 D05 Standard Flow Series11
 D05 High Flow Parallel12
 D08 Standard Flow Parallel14
 D08 High Flow Retro Design Parallel15
 D08 Standard Flow Series15

INTEGRATED CIRCUIT BAR MANIFOLDS16

SUBPLATES
 D03 Super Saver & Side Ported17
 D05 Super Saver & Side Ported18
 D08 Side Ported19

COVER PLATES
 D03, D05 & D08 Cover Plates19

VALVE ADAPTORS20

ISOLATION PLUGS20

MANIFOLD ACCESSORIES
 Pilot Adaptors, Unloading Modules, Orifice Plates21
 Tapping Plates21
 Relief Valve Cartridges21

HEADER BAR MANIFOLDS
 0 Degree22
 90 Degree23
 180 Degree24

JUNCTION BAR MANIFOLDS
 90 Degree25
 180 Degree26
 270 Degree27

RESERVOIRS
 Vertical Econo Reservoirs27
 JIC Reservoirs29
 L Series Reservoirs30
 Horizontal Series Reservoirs30
 Drip Pans for JIC Reservoirs30
 Stacking Modules for JIC Reservoirs31
 End Covers31

RESERVOIR ACCESSORIES
 Filler Breathers32
 Reservoir Flanges33
 Suction Strainers34
 Tank Diffusers34
 Filter Heads & Elements35
 Pressure Gauges38
 Liquid Level Gauges38
 SAE Full & Half Couplings38
 Motor Dampening Bars39
 Gauge Isolators39
 Pressure Switch40
 Modular O'Ring Kit40

ROD END COUPLERS
 M and R Series40



Pump/Motor Mounts

Cast Aluminum Horizontal Mounts

Part Number	Approx. Weight	List Price
M056354F	2.5#	\$37.55
M056352AA	2.5#	\$37.55
M056352A	2.0#	\$37.55
M0563580M(S)	2.0#	\$65.40
M056424F	3.0#	\$37.55
M056422AA	2.5#	\$37.55
M056422A	2.5#	\$37.55
M0564280M(S)	2.5#	\$65.40
M056454F	3.0#	\$37.55
M056452AA	3.0#	\$37.55
M056452A	2.5#	\$37.55
M0564580M(S)	2.5#	\$65.40
M056504F	3.0#	\$66.00
M056502AA	3.0#	\$66.00
M056502A	3.5#	\$66.00
M056502B	3.0#	\$69.80
M0565080M(S)	3.5#	\$94.20
M05650100M	3.0#	\$94.20
M056524F	4.5#	\$69.60
M056522AA	4.5#	\$69.60
M056522A	4.0#	\$69.60
M056522B	4.0#	\$73.25
M0565280M(S)	4.0#	\$94.20
M05652100M	3.5#	\$94.20
M182474F	5.0#	\$62.75
M182472AA	5.0#	\$62.75
M182472A	4.5#	\$62.75
M1824780M(S)	4.0#	\$101.65
M182504F	5.0#	\$53.25
M182502AA	5.0#	\$53.25
M182502A	4.5#	\$53.25
M1825080M(S)	4.0#	\$101.65
M182524F	5.0#	\$53.25
M182522AA	5.0#	\$53.25
M182522A	5.0#	\$53.25
M182522B	5.5#	\$56.85
M182522C	5.0#	\$56.85
M1825280M(S)	5.0#	\$101.65
M18252100M	5.5#	\$101.65
M18252125M	5.0#	\$101.65
M182584F	5.0#	\$61.05
M182582AA	5.0#	\$61.05
M182582A	5.0#	\$61.05
M182582B	6.0#	\$61.05
M182582C	5.5#	\$69.80
M1825880M(S)	5.0#	\$101.65
M18258100M	6.0#	\$101.65
M18258125M	5.0#	\$101.65

Magnaloy Cast Aluminum Pump/Motors include mounting bolts and washers required to install the pump and motor to the Magnaloy mount. All Magnaloy Pump/Motor Mounts are machined with pump mounting holes to accommodate either 2 bolt or 4 bolt configurations.

Part Number	Approx. Weight	List Price
M182602B	6.0#	\$69.80
M182602C	6.0#	\$73.25
M18260100M	6.0#	\$112.30
M18260125M	5.5#	\$112.30
M182684F	5.0#	\$66.45
M182682AA	5.0#	\$66.45
M182682A	5.5#	\$66.45
M182682B	6.0#	\$69.80
M182682C	6.0#	\$73.25
M1826880M(S)	5.5#	\$112.30
M18268100M	6.0#	\$112.30
M18268125M	6.0#	\$112.30
M182702B	6.0#	\$77.90
M182702C	6.0#	\$77.90
M18270100M	6.0#	\$125.10
M18270125M	6.0#	\$125.10
M284682A	9.0#	\$123.15
M284682B	8.5#	\$123.15
M284682C	8.0#	\$123.15
M2846880M(S)	9.0#	\$160.05
M28468100M	8.5#	\$160.05
M28468125M	8.0#	\$160.05
M284752A	9.0#	\$127.90
M284752B	9.0#	\$127.90
M284752C	8.5#	\$127.90
M2847580M(S)	9.0#	\$166.40
M28475100M	9.0#	\$166.40
M28475125M	8.5#	\$166.40
M284862A	9.0#	\$134.35
M284862B	9.5#	\$134.35
M284862C	9.0#	\$134.35
M2848680M(S)	9.0#	\$174.65
M28486100M	9.5#	\$174.65
M28486125M	9.0#	\$174.65
M324762B	16.5#	\$217.85
M324762C	16.0#	\$217.85
M324762D	16.5#	\$217.85
M32476PVR50	16.0#	\$230.25
M32476100M	16.5#	\$262.25
M32476125M	16.0#	\$262.25
M32476160M	15.5#	\$262.25
M32476180M	15.0#	\$262.25
M324872B	18.0#	\$227.90
M324872C	17.5#	\$227.90
M324872D	17.0#	\$227.90
M32487PVR50	17.0#	\$240.35
M32487100M	18.0#	\$302.35
M32487125M	17.0#	\$302.35
M32487160M	17.0#	\$302.35
M32487180M	16.5#	\$302.35
M444882C	28.0#	\$435.00
M444882D	27.0#	\$435.00
M444882E	27.0#	\$435.00

Cast Aluminum Vertical Mounts * **

Part Number	Approx. Weight	List Price
M056354FV	2.0#	\$48.25
M056352AAV	2.0#	\$48.25
M056352AV	2.0#	\$48.25
M0563580M(S)V	2.0#	\$69.80
M056424FV	2.5#	\$48.25
M056422AAV	2.5#	\$48.25
M056422AV	2.0#	\$48.25
M0564280M(S)V	2.0#	\$69.80
M056454FV	2.5#	\$50.60
M056452AAV	2.5#	\$50.60
M056452AV	2.0#	\$50.60
M0564580M(S)V	2.0#	\$69.80
M056504FV	3.0#	\$77.80
M056502AAV	3.0#	\$77.80
M056502AV	3.0#	\$77.80
M056502BV	2.5#	\$77.80
M0565080M(S)V	2.5#	\$100.60
M05650100MV	2.5#	\$100.60
M056524FV	4.0#	\$93.25
M056522AAV	4.0#	\$93.25
M056522AV	4.0#	\$93.25
M056522BV	3.5#	\$93.25
M0565280M(S)V	3.5#	\$100.60
M05652100MV	3.5#	\$100.60
M182504FV	7.0#	\$81.40
M182502AAV	7.0#	\$81.40
M182502AV	6.5#	\$81.40
M1825080M(S)V	6.5#	\$114.90

* Mount Kits for the 182 Motor Frame Group Vertical mounts do not include hardware to attach the mount to the tank top.

** Vertical Mounts in the 182 Motor Frame Group include the Gasket.

Cast Aluminum Vertical

Part Number	Description	List Price
M056VG	NEMA 56C thru 145TC Vertical Mounting Gasket	\$3.40
M182AVG	NEMA 182TC thru 256TC Vertical Mounting Gasket with SAE A Flange and SMALLER Pumps (Option A)	\$4.00
M182BVG	NEMA 182TC thru 256TC Vertical Mounting Gasket with SAE B Flange and LARGER Pumps (Option B) included with Mount	\$5.65

Cast Aluminum Vertical Mounts * **		
Part Number	Approx. Weight	List Price
M182524FV	7.5#	\$81.40
M182522AAV	7.5#	\$81.40
M182522AV	7.0#	\$81.40
M182522BV	8.0#	\$81.40
M182522CV	7.0#	\$81.40
M1825280M(S)V	7.0#	\$117.45
M18252100MV	7.5#	\$117.45
M18252125MV	7.0#	\$117.45
M182584FV	7.0#	\$81.40
M182582AAV	7.0#	\$81.40
M182582AV	7.0#	\$81.40
M182582BV	8.0#	\$81.40
M182582CV	7.5#	\$81.40
M1825880M(S)V	7.0#	\$117.45
M18258100MV	8.0#	\$117.45
M18258125MV	7.5#	\$117.45
M182684FV	7.5#	\$89.85
M182682AAV	7.5#	\$89.85
M182682AV	7.0#	\$89.85
M182682BV	8.5#	\$92.45
M182682CV	8.0#	\$92.45
M1826880M(S)V	7.0#	\$126.15
M18268100MV	8.5#	\$126.15
M18268125MV	8.0#	\$126.15
M18272BV	8.5#	\$97.00
M182702CV	8.0#	\$97.00
M18270100MV	8.5#	\$140.70
M18270125MV	8.0#	\$140.70

Cast Aluminum Horizontal Mounts					
Part Number	Approx. Weight	List Price	Part Number	Approx. Weight	List Price
E575504F	4.0#	\$60.60	E700504F	5.0#	\$81.85
E575502AA	4.0#	\$60.60	E700502AA	5.0#	\$81.85
E575502A	4.0#	\$60.60	E700502A	4.5#	\$81.85
E575502B	4.0#	\$60.60	E7005080M(S)	4.5#	\$128.45
E5755080M(S)	4.0#	\$79.80	E700554F	5.0#	\$81.85
E57550100M	4.0#	\$79.80	E700552AA	5.0#	\$81.85
E575524F	5.0#	\$63.20	E700552A	5.0#	\$81.85
E575522AA	5.0#	\$63.20	E700552B	5.5#	\$81.85
E575522A	4.5#	\$63.20	E7005580M(S)	5.0#	\$128.45
E575522B	4.5#	\$63.20	E70055100M	5.5#	\$128.45
E5755280M(S)	4.5#	\$81.20	E700604F	5.0#	\$81.85
E57552100M	4.5#	\$81.20	E700602AA	5.0#	\$81.85
E575604F	5.0#	\$66.50	E700602A	5.0#	\$81.85
E575602AA	5.0#	\$66.50	E700602B	6.0#	\$81.85
E575602A	5.0#	\$66.50	E700602C	5.5#	\$81.85
E575602B	6.0#	\$69.80	E7006080M(S)	5.0#	\$128.45
E5756080M(S)	6.0#	\$93.95	E70060100M	6.0#	\$128.45
E57560100M	6.0#	\$93.95	E70060125M	5.5#	\$128.45
E644504F	5.0#	\$77.15	E700704F	5.0#	\$86.65
E644502AA	5.0#	\$77.15	E700702AA	5.0#	\$86.65
E644502A	4.5#	\$77.15	E700702A	5.5#	\$86.65
E6445080M(S)	4.5#	\$121.05	E700702B	6.0#	\$86.65
E644554F	5.0#	\$77.15	E700702C	6.0#	\$86.65
E644552AA	5.0#	\$77.15	E7007080M(S)	5.5#	\$133.75
E644552A	5.0#	\$77.15	E70070100M	6.0#	\$133.75
E644552B	5.5#	\$77.15	E70070125M	6.0#	\$133.75
E6445580M(S)	5.0#	\$121.05	E700722B	6.0#	\$86.65
E64455100M	5.5#	\$121.05	E700702C	6.0#	\$86.65
E644604F	5.5#	\$80.15	E70072100M	6.0#	\$133.75
E644602AA	5.5#	\$80.15	E70072125M	6.0#	\$133.75
E644602A	5.0#	\$80.15	E787682A	9.0#	\$174.40
E644602B	6.0#	\$80.15	E787682B	9.0#	\$174.40
E644602C	6.0#	\$80.15	E787682C	8.0#	\$174.40
E6446080M(S)	5.0#	\$122.10	E7876880M(S)	9.0#	\$220.95
E64460100M	6.0#	\$122.10	E78768100M	9.0#	\$220.95
E64460125M	6.0#	\$122.10	E78768125M	8.0#	\$220.95
E644704F	5.5#	\$80.80	E787752A	9.5#	\$174.40
E644702AA	5.5#	\$80.80	E787752B	9.0#	\$174.40
E644702A	5.5#	\$80.80	E787752C	8.5#	\$174.40
E644702B	6.0#	\$80.80	E7877580M(S)	9.5#	\$220.95
E644702C	6.0#	\$80.80	E78775100M	9.0#	\$220.95
E6447080M(S)	5.5#	\$125.60	E78775125M	8.5#	\$220.95
E64470100M	6.0#	\$125.60	E787862A	9.5#	\$174.40
E64470125M	6.0#	\$125.60	E787862B	9.5#	\$174.40
E644722B	6.5#	\$80.80	E787862C	9.0#	\$174.40
E644722C	6.0#	\$80.80	E7878680M(S)	9.5#	\$220.95
E64472100M	6.5#	\$125.60	E78786100M	9.5#	\$220.95
E64472125M	6.0#	\$125.60	E78786125M	9.0#	\$220.95



Pump/Motor Mounts

Welded Steel Horizontal Mounts *

Part Number	Length	List Price	Part Number	Length	List Price	
S056 -- 4F	ALL	\$320.10	S324 -- 2A	OVER 8.00 INCHES	\$489.20	
S056 -- 2AA		\$320.10	S324 -- 2B		\$489.20	
S056 -- 2A		\$301.10	S324 -- 2C		\$489.20	
S056 -- 2B		\$301.10	S324 -- 2D		\$536.05	
S056 -- 2C		\$315.35	S324 -- PVR50		\$536.05	
S056 -- 80M(S)		\$316.15	S324 -- 2E		\$541.55	
S056 -- 100M		\$316.15	S324 -- 2F		\$551.20	
S056 -- 125M		\$331.15	S324 -- 80M(S)		\$513.65	
S182 -- 4F		ALL	\$445.10		S324 -- 100M	\$513.65
S182 -- 2AA			\$445.10		S324 -- 125M	\$513.65
S182 -- 2A	\$427.20		S324 -- 160M	\$562.85		
S182 -- 2B	\$427.20		S324 -- 180M	\$568.65		
S182 -- 2C	\$440.95		S324 -- 200M	\$578.75		
S182 -- 2D	\$502.95		S324 -- 250M	\$578.75		
S182 -- PVR50	\$502.95		S444 -- 2A	\$668.35		
S182 -- 80M(S)	\$448.55		S444 -- 2B	\$668.35		
S182 -- 100M	\$448.55		S444 -- 2C	\$689.00		
S182 -- 125M	\$463.00		S444 -- 2D	\$689.00		
S182 -- 160M	\$528.10	S444 -- PVR50	\$689.00			
S182 -- 180M	\$528.10	S444 -- 2E	\$705.55			
S284 -- 2A	ALL	\$406.50	S444 -- 2F	\$705.55		
S284 -- 2B		\$406.50	S444 -- 80M(S)	\$701.75		
S284 -- 2C		\$413.40	S444 -- 100M	\$701.75		
S284 -- 2D		\$467.15	S444 -- 125M	\$723.45		
S284 -- PVR50		\$467.15	S444 -- 160M	\$723.45		
S284 -- 2E		\$480.90	S444 -- 180M	\$740.80		
S284 -- 2F		\$480.90	S444 -- 200M	\$740.80		
S284 -- 80M(S)		\$426.85	S444 -- 250M	\$740.80		
S284 -- 100M		\$426.85	S444 -- 2A	\$695.90		
S284 -- 125M		\$434.05	S444 -- 2B	\$695.90		
S284 -- 160M	\$490.50	S444 -- 2C	\$709.65			
S284 -- 180M	\$504.95	S444 -- 2D	\$709.65			
S284 -- 200M	\$504.95	S444 -- PVR50	\$709.65			
S284 -- 250M	\$504.95	S444 -- 2E	\$730.35			
S324 -- 2A	UP TO 8.00 INCHES	\$475.40	S444 -- 2F	\$730.35		
S324 -- 2B		\$475.40	S444 -- 80M(S)	\$730.70		
S324 -- 2C		\$475.40	S444 -- 100M	\$730.70		
S324 -- 2D		\$523.65	S444 -- 125M	\$745.15		
S324 -- PVR50		\$523.65	S444 -- 160M	\$745.15		
S324 -- 2E		\$529.15	S444 -- 180M	\$766.85		
S324 -- 2F		\$537.40	S444 -- 200M	\$766.85		
S324 -- 80M(S)		\$499.20	S444 -- 250M	\$766.85		
S324 -- 100M		\$499.20	Magnaloy Welded Steel Pump/Motors do not include mounting bolts and washers. All Magnaloy Pump/Motor Mounts are machined with pump mounting holes to accommodate either 2 bolt or 4 bolt configurations.			
S324 -- 125M		\$499.20				
S324 -- 160M	\$499.75					
S324 -- 180M	\$555.60					
S324 -- 200M	\$564.30					
S324 -- 250M	\$564.30					

Welded Steel Engine Mounts *

Part Number	Length	List Price
SE575 -- 4F	ALL	\$489.20
SE575 -- 2AA		\$489.20
SE575 -- 2A		\$489.20
SE575 -- 80M(S)		\$536.05
SE575 -- 100M		\$536.05
SE644 -- 4F	ALL	\$668.35
SE644 -- 2AA		\$668.35
SE644 -- 2A		\$689.00
SE644 -- 2B		\$689.00
SE644 -- 2C		\$689.00
SE644 -- 2D		\$705.55
SE644 -- 80M(S)		\$705.55
SE644 -- 100M		\$701.75
SE644 -- 125M		\$701.75
SE644 -- 160M		\$723.45
SE644 -- 180M	\$723.45	
SE700 -- 4F	ALL	\$668.35
SE700 -- 2AA		\$668.35
SE700 -- 2A		\$689.00
SE700 -- 2B		\$689.00
SE700 -- 2C		\$689.00
SE700 -- 2D		\$705.55
SE700 -- 80M(S)		\$705.55
SE700 -- 100M		\$701.75
SE700 -- 125M		\$701.75
SE700 -- 160M		\$723.45
SE700 -- 180M	\$723.45	
SE787 -- 2A	ALL	\$689.00
SE787 -- 2B		\$689.00
SE787 -- 2C		\$689.00
SE787 -- 2D		\$705.55
SE787 -- 80M(S)		\$705.55
SE787 -- 100M		\$701.75
SE787 -- 125M		\$701.75
SE787 -- 160M		\$723.45
SE787 -- 180M	\$723.45	

* Magnaloy Welded Steel Mounts do not include mounting bolts and washers.

Welded Steel Vertical Mounts *					
Part Number	Length	List Price	Part Number	Length	List Price
S056 -- 4FV	ALL	\$435.80	S324 -- 2AV	OVER 8.00 INCHES	\$534.65
S056 -- 2AAV		\$435.80	S324 -- 2BV		\$534.65
S056 -- 2AV		\$380.25	S324 -- 2CV		\$534.65
S056 -- 2BV		\$380.25	S324 -- 2DV		\$581.50
S056 -- 2CV		\$427.85	S324 -- 2EV		\$585.65
S056 -- 80M(S)V		\$429.30	S324 -- 2FV		\$596.65
S056 -- 100MV		\$429.30	S324 -- 80M(S)V		\$561.40
S056 -- 125MV		\$449.25	S324 -- 100MV		\$561.40
					S324 -- 125MV
S182 -- 4FV	ALL	\$508.50	S324 -- 160MV	\$610.60	
S182 -- 2AAV		\$508.50	S324 -- 180MV	\$614.95	
S182 -- 2AV		\$491.95	S324 -- 200MV	\$626.50	
S182 -- 2BV		\$491.95	S324 -- 250MV	\$626.50	
S182 -- 2CV		\$502.95	S444 -- 2AV	\$686.25	
S182 -- 2DV		\$565.00	S444 -- 2BV	\$686.25	
S182 -- 80M(S)V		\$516.55	S444 -- 2CV	\$706.90	
S182 -- 100MV		\$516.55	S444 -- 2DV	\$706.90	
S182 -- 125MV		\$528.10	S444 -- 2EV	\$723.45	
S182 -- 160MV		\$593.25	S444 -- 2FV	\$723.45	
S182 -- 180MV		\$593.25	S444 -- 80M(S)V	\$720.55	
S284 -- 2AV		ALL	\$445.10	S444 -- 100MV	\$720.55
S284 -- 2BV			\$445.10	S444 -- 125MV	\$742.25
S284 -- 2CV			\$450.60	S444 -- 160MV	\$742.25
S284 -- 2DV			\$504.35	S444 -- 180MV	\$759.65
S284 -- 2EV	\$516.75		S444 -- 200MV	\$759.65	
S284 -- 2FV	\$516.75		S444 -- 250MV	\$759.65	
S284 -- 80M(S)V	\$467.35		S444 -- 2AV	\$712.45	
S284 -- 100MV	\$467.35		S444 -- 2BV	\$712.45	
S284 -- 125MV	\$473.15		S444 -- 2CV	\$726.20	
S284 -- 160MV	\$529.55		S444 -- 2DV	\$726.20	
S284 -- 180MV	\$542.60		S444 -- 2EV	\$746.90	
S284 -- 200MV	\$542.60		S444 -- 2FV	\$746.90	
S284 -- 250MV	\$542.60		S444 -- 80M(S)V	\$748.05	
				S444 -- 100MV	\$748.05
S324 -- 2AV	UP TO 8.00 INCHES		\$520.90	S444 -- 125MV	\$762.50
S324 -- 2BV		\$520.90	S444 -- 160MV	\$762.50	
S324 -- 2CV		\$520.90	S444 -- 180MV	\$784.20	
S324 -- 2DV		\$567.75	S444 -- 200MV	\$784.20	
S324 -- 2EV		\$573.25	S444 -- 250MV	\$784.20	
S324 -- 2FV		\$584.25	Magnaloy Welded Steel Pump/Motors do not include mounting bolts and washers. All Magnaloy Pump/Motor Mounts are machined with pump mounting holes to accommodate either 2 bolt or 4 bolt configurations.		
S324 -- 80M(S)V		\$546.95			
S324 -- 100MV		\$546.95			
S324 -- 125MV		\$546.95			
S324 -- 160MV		\$596.10			
S324 -- 180MV		\$601.90			
S324 -- 200MV		\$613.50			
S324 -- 250MV		\$613.50			

* Magnaloy Welded Steel Mounts do not include mounting bolts and washers.

Mount Service Window Covers		
Part * Number	Fits Mount Number	List Price
056	M056__ Horizontal & Vertical	\$0.95
182-1	M18250__ & M18252__ Horizontal & Vertical E64455__ & E70055__ Engine	\$0.95
182-2	M18258__ & M18260__ Horizontal & Vertical E64460__ & E70060__ Engine	\$1.00
182-3	M18268__ & M18270__ Horizontal & Vertical E64470__ & E64472__ Engine E70070__ & E70071__ Engine	\$1.05
182-4	M18247__ Horizontal E64450__ & E70050__ Engine	\$0.95
284-1	M28468__ Horizontal E78768__ Engine	\$1.10
284-2	M28475__ Horizontal E78775__ Engine	\$1.15
284-3	M28486__ Horizontal E78786__ Engine	\$1.25
324-1	M32476__ Horizontal	\$1.15
324-2	M32487__ Horizontal	\$1.25
All Magnaloy Pump/Motor Mounts are supplied with one Service Window Cover installed. If additional Service Window Covers are required, order by part number above.		
* Cover Part Number is molded into the inside surface of the cover.		

Special Mounting Configurations			
Part * Number Suffix	Description	List Price	
		Alum	Steel
M8	4 Add'l Motor Mounting Holes to Allow 45° Orientation of Mount	\$28.35	\$68.90
45	Rotation of the 2B Pump Flange Mounting Holes to Allow +/- 45° Orientation of the Pump	\$17.00	\$20.65
W	For Vertical Mounts - mounting holes are tapped per World Wide Motor Bulletin	\$20.00	\$22.50

* This is a Part Number Suffix to the Base Mount Part Number. Example: M182522BM8 or M182522B45

Make the Connection with **magnaloy**

*Whatever your Fluid Power Unit needs,
magnaloy has the products
to keep you connected.*



Flexible Drive Couplings

Top-of-the-line magnesium couplings are lighter, yet stronger than either cast iron or aluminum. They also offer better corrosion resistance and easier handling.



Magnaloy Hydraulic Bar Manifolds & Accessories

Complete line of In-line Bar Manifolds, Subplates, Cover Plates, Valve Adaptors, Integrated Circuit Manifolds, and Accessories to make the design and fabrication of Hydraulic Circuitry simple and easy. Wide range of sizes include: D03, D05, D05H & D08 in aluminum and steel with ports available in SAE, NPTF, BSPP, and BSPT styles. Custom design and fabrication also available, consult factory.

Accessories

Filler Breather Adaptors, Filler Breathers, Reservoir Flanges, Suction Strainers, Gauge Isolators, Liquid Level Gauges, Modular O-Ring Kits.

Pump/Motor Mounts

Precision machined aluminum & custom steel pump/motor mounts directly connect the motor and pump while ensuring accurate shaft alignment and enclosing the coupling. Vertical and horizontal models readily available from stock.



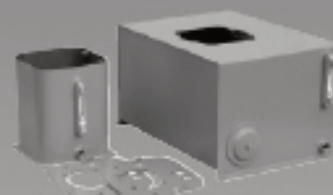
Rod End Couplers

Two models of accurately machined high tensile cylinder rod end alignment couplers offer 7° or 10° spherical and 1/8" parallel misalignment capabilities.



PM 90 Couplings

Economical PM-90 Iron Powder Couplings have long lasting nitrile, hytrel or urethane inserts. Double set screws give excellent gripping power.



Magnaloy Reservoirs & Reservoir Accessories

Magnaloy offers a complete line of standard reservoirs and reservoir accessories. In addition, we offer custom reservoir fabrication to meet our customer specific needs. Reservoir accessories such as Clean Out Covers and SAE Couplings are available for the "do-it-yourself" reservoir manufacturer.



Magnaloy Pressure Switch

Pressure Sensing switch capable of sensing up to three (3) separate pressures. Each sensor is externally independently adjustable from 200 to 4000 psi. Viton seals provide wide fluid compatibility range.