



LIST PRICES
 Effective May 1, 2011
 Subject to change
 upon notice
 Rev88/31/11

**Flexible Drive Couplings PM 90 Couplings Pump/Motor Mounts
 Hydraulic Manifolds & Manifold Accessories
 Reservoirs Reservoir Accessories Rod End Alignment Couplers Price List**



Full Product/Price Index
 On Inside Coveri

PREMIUM FLEXIBLE
 DRIVE COUPLINGS ...1,2

PM 90 COUPLINGS3

PUMP/MOTOR
 MOUNTS4-7

BAR MANIFOLDS ...8-15

INTEGRATED CIRCUIT
 BAR MANIFOLDS16

SUBPLATES17-19

COVER PLATES19

VALVE ADAPTORS20

ISOLATION PLUGS20

MANIFOLD
 ACCESSORIES21

HEADER BAR
 MANIFOLDS22-24

JUNCTION BAR
 MANIFOLDS25-27

RESERVOIRS28-31

RESERVOIR
 ACCESSORIES32-41

ROD END ALIGNMENT
 COUPLERS41

What is it, Where is it
 Index42-63



PREMIUM FLEXIBLE DRIVE COUPLINGS	
Coupling Hubs and Inserts	1
PM 90 FLEXIBLE DRIVE COUPLINGS	
Coupling Hubs and Inserts	3
PUMP/MOTOR MOUNTS	
Horizontal Aluminum Pump/Motor Mounts	4
Vertical Aluminum Pump/Motor Mounts	4
Aluminum Pump/Engine Mounts	5
Welded Steel Horizontal Pump/Motor Mounts	6
Welded Steel Pump/Engine Mounts	6
Welded Steel Vertical Pump/Motor Mounts	7
Service Window Covers	7
BAR MANIFOLDS	
D03 Standard Design	8
D03 Retro Design.....	9
D03 Standard Flow Retro Design Parallel	9
D05 Standard Design.....	11
D08 Standard Design.....	14
D08 Retro Design.....	15
INTEGRATED CIRCUIT BAR MANIFOLDS	16
SUBPLATES	
D03 Super Saver & Side Ported	17
D05 Super Saver & Side Ported	17
D08 Side Ported	19
COVER PLATES	
D03, D05 & D08 Cover Plates	19
VALVE ADAPTORS	20
ISOLATION PLUGS	20
MANIFOLD ACCESSORIES	
Pilot Adaptors, Unloading Modules, Orifice Plates	21
Tapping Plates	21
Relief Valve Cartridges	21
HEADER BAR MANIFOLDS	
0 Degree	22
90 Degree	23
180 Degree	24
JUNCTION BAR MANIFOLDS	
90 Degree	25
180 Degree	26
270 Degree	27
RESERVOIRS	
Vertical Econo Reservoirs	28
JIC Reservoirs	29
L Series Reservoirs	29
Horizontal Series Reservoirs	30
Drip Pans for JIC Reservoirs	30
Stacking Modules for JIC Reservoirs	31
End Covers	31
RESERVOIR ACCESSORIES	
Filler Breathers	32
Reservoir Flanges	33
SAE Full & Half Couplings	34
Channel Mounted Cushion Clamps	34
Modular Stackable Cushion Clamps	34
Clamp Anchor Channel	35
Suction Strainers	35
Tank Diffusers	36
Filter Heads & Elements	36
Pressure Gauges	39
Gauge Isolators	39
Pressure Switch	39
Liquid Level Gauges	39
Motor Base Plates	40
Motor Dampening Bars	40
Modular O'Ring Kit	41
ROD END COUPLERS M and R Series	41
What is it, Where is it Index	42

Filler Breathers

Spin-on Filler Breather Adaptors		
Part Number	Description	List Price
FBS-10012-012P	NPT Style Spin-on	\$21.30
FBS-10216-012P	NPT Style Spin-on	\$21.30
FBS-10816-104P	NPT Style Spin-on	\$21.30
FBS-10816-F	Flange Style Spin-on	\$63.60
FBS-10816-F-G	Flange Style w/Gauge Port	\$71.60
FBS-10012-B	Bayonet Style Spin-on	\$31.30
FBS-10216-B	Bayonet Style Spin-on	\$31.30
FBS-10816-B	Bayonet Style Spin-on	\$31.30

Filler Breather Caps			
Part Number	Custom Pt No Code ¹	Description	List Price
FB-C-A	A	"A" Cap	\$8.10
FB-C-D	D	"D" Cap	\$10.20
FB-C-H	H	"H" Cap	\$12.20
FB-C-K	K	"K" Cap	\$15.12
FB-C-MB-P004		Mini Cap 1/4" NPT	\$13.00
FB-C-MB-P006		Mini Cap 3/8" NPT	\$13.00
FB-C-MB-P008		Mini Cap 1/2" NPT	\$13.00
FB-C-MB-P012		Mini Cap 3/4" NPT	\$14.50

Filler Breather Mounting Flanges			
Part Number	Custom Pt No Code ¹	Description	List Price
FB-F-008	008	008 Flange 1/2" Height	\$5.60
FB-F-108	108	108 Flange 1 1/2" Height	\$14.10
FB-F-600	600	600 Flange 6" Height	\$27.80

Other Filler Breather Components			
Part Number	Custom Pt No Code ¹	Description	List Price
FB-O-L	L	Lock Kit (w/out Pad Lock)	\$3.90
FB-O-PL	PL	Pad Lock	\$8.20
FB-O-SM	SM	Side Mount Kit (No Cap)	\$31.30
	D- -	Dipstick (less than 6")	\$8.70
	D- -	Dipstick (6" or greater)	\$10.70

Filler Breather Screens			
Part Number	Custom Pt No Code ¹	Description	List Price
FB-S-N	N ²	"N" Screen - Brass - 6"	\$9.20
FB-S-P	P	"P" Screen - Nylon - 4"	\$11.20
FB-S-R	R ²	"R" Screen - Brass - 4"	\$9.70
FB-S-V	V ²	"V" Screen - Brass - 9 1/4"	\$5.60
FB-S-W	W	"W" Screen - Stainless - 3 1/4" Length	\$7.20
FB-S-X	X	"X" Screen - Stainless - 6 1/2"	\$7.70
FB-S-Y	Y	"Y" Screen - Stainless - 8 1/4" Length	\$9.40
FB-S-Z	Z	"Z" Screen - Stainless - 10 1/4" Length	\$9.40

Standard Filler Breather Assemblies		
Part Number	Description	List Price
FB-A008W	A Cap - "W" Screen	\$12.20
FB-A008P	A Cap - "P" Screen	\$15.50
FB-K008W	K Cap - "W" Screen	\$22.10

1 Code used in part number breakdown on page 129 of Reservoir Catalog.

2 Check with factory for availability on these screens.

Return Line Flanges

Reservoir Return Line Flanges - Pipe Sizes		
Part Number	Description	List Price
PREMIUM LINE		
RLF-008P	1/2" Pipe	\$23.60
RLF-012P	3/4" Pipe	\$23.60
RLF-100P	1" Pipe	\$23.60
RLF-104P	1 1/4" Pipe	\$23.60
RLF-108P	1 1/2" Pipe	\$23.60
RLF-200P	2" Pipe	\$23.60
ECONOMY LINE		
RLFE-000P	Blank	\$6.30
RLFE-008P	1/2" Pipe	\$6.30
RLFE-012P	3/4" Pipe	\$6.30
RLFE-100P	1" Pipe	\$6.30
RLFE-104P	1 1/4" Pipe	\$6.30
RLFE-108P	1 1/2" Pipe	\$6.30
RLFE-200P	2" Pipe	\$6.30

Reservoir Return Line Flanges - Tube Sizes		
Part Number	Description	List Price
PREMIUM LINE		
RLF-008T	1/2" Tube	\$23.60
RLF-012T	3/4" Tube	\$23.60
RLF-100T	1" Tube	\$23.60
RLF-104T	1 1/4" Tube	\$23.60
RLF-108T	1 1/2" Tube	\$23.60
RLF-200T	2" Tube	\$23.60
ECONOMY LINE		
RLFE-006T	3/8" Tube	\$6.30
RLFE-008T	1/2" Tube	\$6.30
RLFE-012T	3/4" Tube	\$6.30
RLFE-100T	1" Tube	\$6.30
RLFE-104T	1 1/4" Tube	\$6.30
RLFE-108T	1 1/2" Tube	\$6.30
RLFE-200T	2" Tube	\$6.30

Suction Line Flanges

Reservoir Suction Line Flanges - Pipe Sizes		
Part Number	Description	List Price
PREMIUM LINE		
SLF-008P	1/2" Pipe	\$28.50
SLF-012P	3/4" Pipe	\$28.50
SLF-100P	1" Pipe	\$28.50
SLF-104P	1 1/4" Pipe	\$28.50
SLF-108P	1 1/2" Pipe	\$28.50
SLF-200P	2" Pipe	\$28.50
ECONOMY LINE 4 1/2" Cutout		
SLFE-500-000P	Blank	\$8.90
SLFE-500-008P	1/2" Pipe	\$8.90
SLFE-500-012P	3/4" Pipe	\$8.90
SLFE-500-100P	1" Pipe	\$8.90
SLFE-500-104P	1 1/4" Pipe	\$8.90
SLFE-500-108P	1 1/2" Pipe	\$8.90
SLFE-500-200P	2" Pipe	\$8.90
ECONOMY LINE 6 1/2" Cutout		
SLFE-700-108P	1 1/2" Pipe	\$14.00
SLFE-700-200P	2" Pipe	\$14.00
SLFE-700-208P	2 1/2" Pipe	\$14.00
SLFE-700-300P	3" Pipe	\$14.00

Reservoir Suction Line Flanges - Tube Sizes		
Part Number	Description	List Price
PREMIUM LINE		
SLF-008T	1/2" Tube	\$28.50
SLF-012T	3/4" Tube	\$28.50
SLF-100T	1" Tube	\$28.50
SLF-104T	1 1/4" Tube	\$28.50
SLF-108T	1 1/2" Tube	\$28.50
SLF-200T	2" Tube	\$28.50
ECONOMY LINE 4 1/2" Cutout		
SLFE-500-006T	3/8" Tube	\$8.90
SLFE-500-008T	1/2" Tube	\$8.90
SLFE-500-012T	3/4" Tube	\$8.90
SLFE-500-100T	1" Tube	\$8.90
SLFE-500-104T	1 1/4" Tube	\$8.90
SLFE-500-108T	1 1/2" Tube	\$8.90



SAE Full and Half Couplings

Part Number	Description	List Price
SAE to NPT Full Couplings		
4S-4N	#4 SAE to 1/4" NPT	\$11.90
6S-6N	#6 SAE to 3/8" NPT	\$14.50
8S-8N	#8 SAE to 1/2" NPT	\$17.90
10S-8N	#10 SAE to 1/2" NPT	\$18.90
12S-12N	#12 SAE to 3/4" NPT	\$19.80
16S-16N	#16 SAE to 1" NPT	\$23.80
SAE to Socket Weld Full Couplings		
8S-8W	#8 SAE to 1/2" Pipe	\$17.90
10S-8W	#10 SAE to 1/2" Pipe	\$17.90
12S-12W	#12 SAE to 3/4" Pipe	\$19.80
16S-16W	#16 SAE to 1" Pipe	\$22.50
20S-20W	#20 SAE to 1 1/4" Pipe	\$30.40
24S-24W	#24 SAE to 1 1/2" Pipe	\$33.10

Part Number	Description	List Price
SAE Half Couplings		
4S	#4 SAE	\$7.10
6S	#6 SAE	\$7.10
8S	#8 SAE	\$8.20
10S	#10 SAE	\$8.20
12S	#12 SAE	\$9.30
16S	#16 SAE	\$12.60
20S	#20 SAE	\$14.50
24S	#24 SAE	\$16.70

Channel Mounted Cushion Clamps

Channel Mounted Cushion Clamps - TUBE SIZES				
Part Number	Description	List Price	Box Quantity	List Per Box
MCC-008T	1/4" Tube	\$ 1.70	25	\$38.30
MCC-012T	3/8" Tube	\$1.70	25	\$38.30
MCC-016T	1/2" Tube	\$1.70	25	\$38.30
MCC-020T	5/8" Tube	\$1.70	25	\$38.60
MCC-024T	3/4" Tube	\$1.90	25	\$42.80
MCC-028T	7/8" Tube	\$2.20	25	\$49.50
MCC-100T	1" Tube	\$2.30	25	\$51.80
MCC-104T	1 1/8" Tube	\$2.60	20	\$46.80
MCC-106T	1 3/16" Tube	Quote	20	Quote
MCC-108T	1 1/4" Tube	\$2.80	20	\$50.40
MCC-112T	1 3/8" Tube	\$3.10	20	\$55.80
MCC-116T	1 1/2" Tube	\$3.30	20	\$59.40
MCC-120T	1 5/8" Tube	\$4.10	20	\$73.80
MCC-124T	1 3/4" Tube	\$4.00	20	\$72.00
MCC-128T	1 7/8" Tube	\$5.30	20	\$95.40
MCC-200T	2" Tube	\$4.40	10	\$39.60
MCC-204T	2 1/8" Tube	\$6.10	10	\$54.90
MCC-208T	2 1/4" Tube	\$6.60	10	\$59.40
MCC-212T	2 3/8" Tube	\$6.80	10	\$61.20
MCC-216T	2 1/2" Tube	\$7.30	5	\$32.90
MCC-220T	2 5/8" Tube	\$6.90	5	\$31.10
MCC-228T	2 7/8" Tube	\$8.70	5	\$39.20
MCC-300T	3" Tube	\$8.90	5	\$40.10
MCC-304T	3 1/8" Tube	\$8.90	5	\$40.10
MCC-320T	3 5/8" Tube	\$12.10	5	\$54.50
MCC-404T	4 1/8" Tube	\$16.90	5	\$76.10

Channel Mounted Cushion Clamps - PIPE SIZES				
Part Number	Description	List Price	Box Quantity	List Per Box
MCC-008P	1/4" Pipe	\$ 2.10	25	\$47.30
MCC-012P	3/8" Pipe	\$2.30	25	\$51.80
MCC-016P	1/2" Pipe	\$2.40	25	\$54.00
MCC-024P	3/4" Pipe	\$2.70	20	\$48.60
MCC-100P	1" Pipe	\$3.10	20	\$55.80
MCC-108P	1 1/4" Pipe	\$4.10	20	\$73.80
MCC-116P	1 1/2" Pipe	\$5.30	20	\$95.40
MCC-200P	2" Pipe	\$6.80	10	\$61.20
MCC-216P	2 1/2" Pipe	\$8.70	5	\$39.20
MCC-300P	3" Pipe	\$11.60	5	\$52.20
MCC-316P	3 1/2" Pipe	\$16.80	5	\$75.60
MCC-400P	4" Pipe	\$21.90	5	\$98.60
MCC-500P	5" Pipe	\$34.90	1	
MCC-600P	6" Pipe	\$47.10	1	

Modular-Stackable Cushion Clamps

Contact Factory for Pricing and Selection

Clamp Anchor Channel

Clamp Anchor Channel - SINGLE		
Part Number	Description	List Price
MAC-S12100-036/S	12ga Steel 36"	Quote
MAC-S12100-048/S	12ga Steel 48"	\$12.25
MAC-S12100-120/S	12ga Steel 120"	\$27.00
MAC-S12028-036/S	12ga Steel 36"	Quote
MAC-S12028-048/S	12ga Steel 48"	\$11.55
MAC-S12028-120/S	12ga Steel 120"	\$24.25
MAC-S14026-048/S	14ga Steel 48"	\$9.95
MAC-S14026-120/S	14ga Steel 120"	\$21.85
MAC-S14026-048/SS4	14ga 304 SS 48"	Quote
MAC-S14026-120/SS4	14ga 304 SS 120"	Quote
MAC-S14026-048/SS6	14ga 316 SS 48"	Quote
MAC-S14026-120/SS6	14ga 316 SS 120"	Quote

Clamp Anchor Channel - DOUBLE		
Part Number	Description	List Price
MAC-D12200-048/S	12ga Steel 48"	\$26.10
MAC-D12200-120/S	12ga Steel 120"	\$60.60
MAC-D12124-048/S	12ga Steel 48"	\$27.30
MAC-D12124-120/S	12ga Steel 120"	\$54.55
MAC-D14120-048/S	14ga Steel 48"	\$37.20
MAC-D14120-120/S	14ga Steel 120"	\$49.70
MAC-D14120-048/SS4	14ga 304 SS 48"	Quote
MAC-D14120-120/SS4	14ga 304 SS 120"	Quote
MAC-D14120-048/SS6	14ga 316 SS 48"	Quote
MAC-D14120-120/SS6	14ga 316 SS 120"	Quote

Suction Strainers

Suction Strainers - Internally Mounted		
Part Number	By-Pass	List Price
SS-003P006-1-0	None	\$11.70
SS-005P008-1-0	None	\$12.60
SS-005P008-*-*	3 or 5 psi	\$21.30
SS-008P012-*-0	None	\$13.80
SS-008P012-*-*	3 or 5 psi	\$21.30
SS-010P100-*-0	None	\$16.20
SS-010P100-*-*	3 or 5 psi	\$33.40
SS-023P104-*-0	None	\$21.60
SS-023P104-*-*	3 or 5 psi	\$36.30
SS-032P108-*-0	None	\$29.40
SS-032P108-*-*	3 or 5 psi	\$40.50
SS-053P200-*-0	None	\$39.60
SS-053P200-*-*	3 or 5 psi	\$65.10
SS-075P208-*-0	None	\$75.60
SS-075P208-*-*	3 or 5 psi	\$89.70

* See page 145 of Reservoir Catalog for Part Number Breakdown on optional Wire Mesh and By-Pass settings.

Suction Strainers - Externally Mounted		
Part Number	By-Pass	List Price
SS-008P012/P104-*-0	None	\$28.80
SS-008P012/P104-*-*	3 or 5 psi	\$37.50
SS-014P100/P108-*-0	None	\$29.40
SS-014P100/P108-*-*	3 or 5 psi	\$38.40
SS-014P100/P300-*-0	None	\$46.20
SS-014P100/P300-*-*	3 or 5 psi	\$51.00
SS-014S020/P300-*-0	None	\$61.20
SS-014S020/P300-*-*	3 or 5 psi	\$66.00
SS-021S024/P300-*-0	None	\$70.20
SS-021S024/P300-*-*	3 or 5 psi	\$75.30
SS-023P104/P200-*-0	None	\$34.80
SS-023P104/P200-*-*	3 or 5 psi	\$43.80
SS-023P104/P300-*-0	None	\$49.50
SS-023P104/P300-*-*	3 or 5 psi	\$54.30
SS-032P108/P300-*-0	None	\$56.10
SS-032P108/P300-*-*	3 or 5 psi	\$61.20
SS-053P200/P300-*-0	None	\$75.00
SS-053P200/P300-*-*	3 or 5 psi	\$80.10
SS-053P200/P400-*-0	None	\$85.50
SS-053P200/P400-*-*	3 or 5 psi	\$93.90
SS-075P208/P400-*-0	None	\$91.80
SS-075P208/P400-*-*	3 or 5 psi	\$99.60

* See page 146 of Reservoir Catalog for Part Number Breakdown on optional Wire Mesh and By-Pass settings.

Tank Diffusers

Tank Diffusers		
Part Number	Outside Diameter	List Price
TD-014P008-D1	1.30"	\$28.50
TD-014P008-D2	3.20"	\$22.40
TD-025P012-D1	1.70"	\$21.80
TD-025P012-D2	3.20"	\$24.10
TD-040P100-D1	1.90"	\$35.90
TD-040P100-D2	3.20"	\$32.80

Tank Diffusers		
Part Number	Outside Diameter	List Price
TD-070P104-D1	3.20"	\$41.70
TD-095P108-D1	3.20"	\$41.70
TD-157P200-D1	4.20"	\$54.40
TD-224P208-D1	4.20"	\$67.00

Filter Heads and Elements

Spin-on Filter Heads with ΔP Indicator

Spin-on Filter Heads		
Part Number	Description	List Price
SFH-P104/00-0-0-00	1 1/4" NPT x 1 1/4" NPT - no options	\$40.30
SFH-S020/00-0-0-00	#20 SAE x #20 SAE - no options	\$40.30
SFH-B104/00-0-0-00	1 1/4" BSP x 1 1/4" BSP - no options	\$40.30

Option Price Adders		
By-Pass Valve Setting	All Codes	\$ 3.30
Gauge Port Location	Locations 1&3 or 4&6 (per set)	\$3.30
Gauge Port Location	Locations 2 or 5 (each)	\$3.30
ΔP Indicator Option	V Code	\$20.70
	E Code	\$31.90
	B Code	\$124.20

Spin-on Filter Elements		
Part Number	Description	List Price
Cellulose Media		
CSFE-003-069	6.9" Length, 3 Micron	\$28.30
CSFE-010-069	6.9" Length, 10 Micron	\$22.50
CSFE-025-069	6.9" Length, 25 Micron	\$22.50
CSFE-141-069	6.9" Length, 141 Micron	\$60.40
CSFE-003-109	10.9" Length, 3 Micron	\$47.70
CSFE-003-109/WA	10.9" Length, 3 Micron, Water Absorbing	\$56.90
CSFE-010-109	10.9" Length, 10 Micron	\$35.10
CSFE-010-109/WA	10.9" Length, 10 Micron, Water Absorbing	\$53.80
CSFE-025-109	10.9" Length, 25 Micron	\$35.10
CSFE-141-109	10.9" Length, 141 Micron	\$81.90
Synthetic Media		
SSFE-003-067	6.7" Length, 3 Micron	\$68.40
SSFE-010-067	6.7" Length, 10 Micron	\$68.40
SSFE-025-067	6.7" Length, 25 Micron	\$68.40
SSFE-003-107	10.7" Length, 3 Micron	\$68.40
SSFE-010-107	10.7" Length, 10 Micron	\$68.40
SSFE-025-107	10.7" Length, 25 Micron	\$68.40

Filter Heads and Elements (continued)

Tank Top Filter Heads - Integral Breather Series

Integral Breather Tank Top Filter Heads		
Part Number	Description	List Price
TTF-ITB-P008-0	1/2" NPT - no Dipstick	\$47.10
TTF-ITB-S008-0	#8 SAE - no Dipstick	\$47.10
TTF-ITB-B008-0	1/2" BSP - no Dipstick	\$47.10
TTF-ITB-P012-0	3/4" NPT - no Dipstick	\$47.10
TTF-ITB-S012-0	#12 SAE - no Dipstick	\$47.10
TTF-ITB-B012-0	3/4" BSP - no Dipstick	\$47.10
Option Price Adders		
Dipstick	D Codes	\$16.70

Integral Breather Tank Top Filter Elements		
Part Number	Description	List Price
Cellulose Media		
CTTE-ITB-03N	3 Micron Nominal	\$22.70
CTTE-ITB-10N	10 Micron Nominal	\$22.70
CTTE-ITB-25N	25 Micron Nominal	\$22.70
Synthetic Media		
STTE-ITB-03A	3 Micron Absolute	\$50.60
STTE-ITB-10A	10 Micron Absolute	\$50.60

Tank Top Filter Heads - Suction /Return Line Series

Suction/Return Line Tank Top Filter Heads		
Part Number	Description	List Price
ALUMINUM BODY		
TTF-ASR-xxx/xxx-00-10-0	All L & R Ports - Code 10 Gauge Port Location, no Oil Fill Port	\$146.00
TTF-ASR-xxx/xxx-00-12-0	All L & R Ports - Code 12 Gauge Port Location, no Oil Fill Port	\$150.60
TTF-ASR-xxx/xxx-00-1P-0	All L & R Ports - Code 1P Gauge Port Location, 1 1/4" NPT Oil Fill Port	\$169.00
TTF-ASR-xxx/xxx-00-1S-0	All L & R Ports - Code 1S Gauge Port Location, #12 SAE Oil Fill Port	\$171.30
STEEL BODY		
TTF-SSR-xxx/xxx-00-10-0	All L & R Ports - Code 10 Gauge Port Location, no Oil Fill Port	\$146.00
TTF-SSR-xxx/xxx-00-12-0	All L & R Ports - Code 12 Gauge Port Location, no Oil Fill Port	\$150.60
TTF-SSR-xxx/xxx-00-1P-0	All L & R Ports - Code 1P Gauge Port Location, 1 1/4" NPT Oil Fill Port	\$169.00
TTF-SSR-xxx/xxx-00-1S-0	All L & R Ports - Code 1S Gauge Port Location, #12 SAE Oil Fill Port	\$171.30
Option Price Adders - all bodies		
Check Valve	V Code	\$10.30

Filter Heads and Elements (continued)

Suction/Retrun Line Tank Top Filter Elements		
Part Number	Description	List Price
Cellulose Media for Aluminum Body		
CTTE-ASR-003-092-BD	For Aluminum Body, 3 Micron, Bi-Directional Flow	\$25.30
CTTE-ASR-003-092-OI/WA	For Aluminum Body, 3 Micron, Outside to Inside Flow, Water Absorbing	\$33.30
CTTE-ASR-010-092-BD	For Aluminum Body, 10 Micron, Bi-Directional Flow	\$20.10
CTTE-ASR-025-092-BD	For Aluminum Body, 25 Micron, Bi-Directional Flow	\$20.10
CTTE-ASR-010-182-BD	For Aluminum Body, 10 Micron, Bi-Directional Flow	\$34.50
CTTE-ASR-025-182-BD	For Aluminum Body, 25 Micron, Bi-Directional Flow	\$34.50
CTTE-ASR-100-092-OI	For Aluminum Body, 141 Micron, Outside to Inside Flow	\$65.50
CTTE-ASR-100-092-IO	For Aluminum Body, 141 Micron, Inside to Outside Flow	\$65.50
CTTE-ASR-100-092-OI/M	For Aluminum Body, 141 Micron, Outside to Inside Flow, Magnetic	\$164.40
CTTE-ASR-100-092-IO/M	For Aluminum Body, 141 Micron, Inside to Outside Flow, Magnetic	\$164.40
CTTE-ASR-100-182-OI	For Aluminum Body, 141 Micron, Outside to Inside Flow	\$127.60
Synthetic Media for Aluminum Body		
STTE-ASR-003-092-OI	For Aluminum Body, 3 Micron, Outside to Inside Flow	\$86.30
STTE-ASR-010-092-OI	For Aluminum Body, 10 Micron, Outside to Inside Flow	\$64.40
STTE-ASR-003-182-OI	For Aluminum Body, 3 Micron, Outside to Inside Flow	\$166.80
STTE-ASR-010-182-OI	For Aluminum Body, 10 Micron, Outside to Inside Flow	\$144.90
Cellulose Media for Steel Body		
CTTE-SSR-003-092-BD	For Steel Body, 3 Micron, Bi-Directional Flow	\$24.70
CTTE-SSR-010-092-BD	For Steel Body, 10 Micron, Bi-Directional Flow	\$20.10
CTTE-SSR-010-092-IO/WA	For Steel Body, 10 Micron, Outside to Inside Flow, Water Absorbing	\$31.00
CTTE-SSR-025-092-BD	For Steel Body, 25 Micron, Bi-Directional Flow	\$20.10
CTTE-SSR-010-182-BD	For Steel Body, 10 Micron, Bi-Directional Flow	\$36.20
CTTE-SSR-025-182-BD	For Steel Body, 25 Micron, Bi-Directional Flow	\$36.20
CTTE-SSR-100-092-OI	For Steel Body, 141 Micron, Outside to Inside Flow	\$65.50
CTTE-SSR-100-092-IO	For Steel Body, 141 Micron, Inside to Outside Flow	\$65.50
CTTE-SSR-100-092-OI/M	For Steel Body, 141 Micron, Outside to Inside Flow, Magnetic	\$162.10
CTTE-SSR-100-092-IO/M	For Steel Body, 141 Micron, Inside to Outside Flow, Magnetic	\$162.10
Synthetic Media for Steel Body		
STTE-SSR-003-092-OI	For Steel Body, 3 Micron, Outside to Inside Flow	\$86.30
STTE-SSR-010-092-OI	For Steel Body, 10 Micron, Outside to Inside Flow	\$65.00
STTE-SSR-003-182-OI	For Steel Body, 3 Micron, Outside to Inside Flow	\$166.80
STTE-SSR-010-182-OI	For Steel Body, 10 Micron, Outside to Inside Flow	\$144.90

Pressure Gauges

Pressure Gauges		
Part Number	Description	List Price
LFGP-208-xxx-04N/BS	2 1/2" Gauge, All Dial Ranges, 1/4" NPT Bottom Stem	\$32.80
LFGP-208-xxx-04N/RS	2 1/2" Gauge, All Dial Ranges, 1/4" NPT Rear Stem	\$38.60
LFGP-400-xxx-04N/BS	4" Gauge, All Dial Ranges, 1/4" NPT Bottom Stem	\$50.60
LFGP-400-xxx-08N/BS	4" Gauge, All Dial Ranges, 1/2" NPT Bottom Stem	\$50.60
LFGP-400-xxx-04N/RS	4" Gauge, All Dial Ranges, 1/4" NPT Rear Stem	\$65.00

Gauge Isolators

Part Number	Description	List Price
GI-01-SAE	Single Station - SAE	\$127.10
GI-01-NPT	Single Station - NPT	\$127.10
GI-06-SAE	Six Station - SAE	\$176.10

Pressure Switches

Part Number	Description	List Price
PS-400-115	Single Switch	\$54.10
PS-400-215	Double Switch	\$79.80
PS-400-315	Triple Switch	\$100.60
Options		
L or H Code	High or Low Pressure Rated Spring	\$5.60
	Pre-Set Pressrue Settings	\$5.60

Liquid Level Gauges

Liquid Level Gauges		
Part Number	Description	List Price
Standard Series		
SLLG-03T	3" Standard Gauge w/Temp	\$19.70
SLLG-03T-C	3" Standard Gauge w/Temp & Cover	\$25.80
SLLG-05T	5" Standard Gauge w/Temp	\$23.00
SLLG-05T-C	5" Standard Gauge w/Temp & Cover	\$29.20
SLLG-10T	10" Standard Gauge w/Temp	\$32.20
SLLG-10T-C	10" Standard Gauge w/Temp & Cover	\$39.80
Premium Series		
PLLG-03T	3" Premium Gauge w/Temp	\$37.60
PLLG-05T	5" Premium Gauge w/Temp	\$35.80
PLLG-10T	10" Premium Gauge w/Temp	\$83.00
Sight Glass Series		
SLSG-100	1 1/4" Nylon Sight Glass	\$8.60

Motor Base Plates

Part Number	Description	List Price
MBP-056/184	056C thru 184TC Base Plate	\$37.90
MBP-213/256	213TC thru 256TC Base Plate	\$52.90
MBP-284/326	284TC/TSC thru 326TC/TSC Base Plate	\$59.80

Motor Dampening Bars

Part Number	Description	List Price	Part Number	Description	List Price
Bolt Down Series			Weld Series		
MDB056-B	056C Motor Frame	\$163.30	MDB056-W	056C Motor Frame	\$112.70
MDB143-B	143TC Motor Frame	\$163.30	MDB143-W	143TC Motor Frame	\$117.30
MDB145-B	145TC Motor Frame	\$177.10	MDB145-W	145TC Motor Frame	\$126.50
MDB182-B	182TC Motor Frame	\$177.10	MDB182-W	182TC Motor Frame	\$126.50
MDB184-B	184TC Motor Frame	\$177.10	MDB184-W	184TC Motor Frame	\$131.10
MDB213-B	213TC Motor Frame	\$209.30	MDB213-W	213TC Motor Frame	\$154.10
MDB215-B	215TC Motor Frame	\$223.10	MDB215-W	215TC Motor Frame	\$167.90
MDB254-B	254TC Motor Frame	\$230.00	MDB254-W	254TC Motor Frame	\$186.30
MDB256-B	256TC Motor Frame	\$255.30	MDB256-W	256TC Motor Frame	\$202.40
MDB284-B	284TC Motor Frame	\$322.00	MDB284-W	284TC Motor Frame	\$294.40
MDB286-B	286TC Motor Frame	\$374.90	MDB286-W	286TC Motor Frame	\$294.40
MDB324-B	324TC Motor Frame	\$466.90	MDB324-W	324TC Motor Frame	\$374.90
MDB326-B	326TC Motor Frame	\$466.90	MDB326-W	326TC Motor Frame	\$411.70
MDB364-B	364TC Motor Frame	\$466.90	MDB364-W	364TC Motor Frame	\$411.70
MDB365-B	365TC Motor Frame	\$499.60	MDB365-W	365TC Motor Frame	\$411.70
MDB404-B	404TC Motor Frame	\$510.60	MDB404-W	404TC Motor Frame	\$450.80
MDB405-B	405TC Motor Frame	\$611.80	MDB405-W	405TC Motor Frame	\$510.60
MDB444-B	444TC Motor Frame	\$752.10	MDB444-W	444TC Motor Frame	\$678.50
MDB445-B	445TC Motor Frame	\$752.10	MDB445-W	445TC Motor Frame	\$678.50

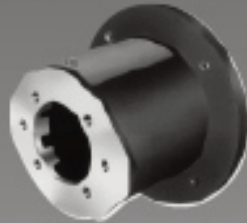
Motor Dampening Bar Weld Pad Kits*

Part Number	Description	List Price
MWP056-256	056C thru 256TC Motor Frames	\$51.70
MWP284-286	284TC/TSC thru 286TC/TSC Motor Frames	\$73.60
MWP324-365	324TC/TSC thru 365TC/TSC Motor Frames	\$73.60
MWP404-405	404TC/TSC thru 405TC/TSC Motor Frames	\$86.30
MWP444-445	444TC/TSC thru 445TC/TSC Motor Frames	\$86.30

* Kit includes 4 Weld Pads only.
Order Bolt Down Series Dampening Bars separately.

Make the Connection with **magnaloy**

*Whatever your Fluid Power Unit needs,
magnaloy has the products
to keep you connected.*



Flexible Drive Couplings

Top-of-the-line magnesium couplings are lighter, yet stronger than either cast iron or aluminum. They also offer better corrosion resistance and easier handling.



Magnaloy Hydraulic Bar Manifolds & Accessories

Complete line of In-line Bar Manifolds, Subplates, Cover Plates, Valve Adaptors, Integrated Circuit Manifolds, and Accessories to make the design and fabrication of Hydraulic Circuitry simple and easy. Wide range of sizes include: D03, D05, D05H & D08 in aluminum and steel with ports available in SAE, NPTF, BSPP, and BSPT styles. Custom design and fabrication also available, consult factory.

Accessories

Filler Breather Adaptors, Filler Breathers, Reservoir Flanges, Suction Strainers, Gauge Isolators, Liquid Level Gauges, Modular O-Ring Kits.

Pump/Motor Mounts

Precision machined aluminum & custom steel pump/motor mounts directly connect the motor and pump while ensuring accurate shaft alignment and enclosing the coupling. Vertical and horizontal models readily available from stock.



Rod End Couplers

Two models of accurately machined high tensile cylinder rod end alignment couplers offer 7° or 10° spherical and 1/8" parallel misalignment capabilities.



PM 90 Couplings

Economical PM-90 Iron Powder Couplings have long lasting nitrile, hytrel or urethane inserts. Double set screws give excellent gripping power.



Magnaloy Reservoirs & Reservoir Accessories

Magnaloy offers a complete line of standard reservoirs and reservoir accessories. In addition, we offer custom reservoir fabrication to meet our customer specific needs. Reservoir accessories such as Clean Out Covers and SAE Couplings are available for the "do-it-yourself" reservoir manufacturer.



Magnaloy Pressure Switch

Pressure Sensing switch capable of sensing up to three (3) separate pressures. Each sensor is externally independently adjustable from 200 to 4000 psi. Viton seals provide wide fluid compatibility range.