



**LIST PRICES**

Effective January 30, 2026  
 Subject to change  
 without notice

**Hydraulic Manifolds & Manifold Accessories  
 Price List**



**Product/Price Index**

- D03 STANDARD DESIGN  
 PARALLEL..... 1
  
- D03 STANDARD DESIGN  
 SERIES ..... 2
  
- D03 STANDARD FLOW RETRO  
 DESIGN PARALLEL ..... 3
  
- D03 HIGH FLOW RETRO  
 DESIGN PARALLEL ..... 4
  
- D05 STANDARD DESIGN ..... 5
  
- D05 HIGH FLOW STANDARD  
 DESIGN PARALLEL ..... 6
  
- D08 STANDARD DESIGN ..... 8
  
- D08 HIGH FLOW  
 RETRO DESIGN ..... 9
  
- INTEGRATED CIRCUIT  
 BAR MANIFOLDS ..... 11
  
- SUBPLATES ..... 12
  
- COVER PLATES..... 14
  
- VALVE ADAPTORS ..... 15
  
- ISOLATION PLUGS ..... 15
  
- MANIFOLD ACCESSORIES ..... 16
  
- RELIEF VALVE CARTRIDGE .... 16
  
- HEADER BAR MANIFOLDS..... 17
  
- JUNCTION BAR  
 MANIFOLDS..... 32



# D03 Standard Flow Bar Manifolds - Parallel

## Parallel

### ALUMINUM (2.00" Valve Spacing)

Part Number	Price
BM-ASP03X2-01-1/Z	\$76.00
BM-ASP03X2-02-1/Z	\$96.00
BM-ASP03X2-03-1/Z	\$126.00
BM-ASP03X2-04-1/Z	\$162.00
BM-ASP03X2-05-1/Z	\$189.00
BM-ASP03X2-06-1/Z	\$222.00
BM-ASP03X2-07-1/Z	\$249.00
BM-ASP03X2-08-1/Z	\$280.00
BM-ASP03X2-09-1/Z	\$344.00
BM-ASP03X2-10-1/Z	\$377.00

### STEEL (2.00" Valve Spacing)

Part Number	Price
BM-SSP03X2-01-1/Z	\$150.00
BM-SSP03X2-02-1/Z	\$234.00
BM-SSP03X2-03-1/Z	\$321.00
BM-SSP03X2-04-1/Z	\$394.00
BM-SSP03X2-05-1/Z	\$470.00
BM-SSP03X2-06-1/Z	\$533.00
BM-SSP03X2-07-1/Z	\$602.00
BM-SSP03X2-08-1/Z	\$673.00
BM-SSP03X2-09-1/Z	\$765.00
BM-SSP03X2-10-1/Z	\$844.00

**NOTE: X = Thread Type.** See Model Number Breakdown in our Product Catalog, page 48 for the appropriate code.

**Manifolds with more stations than listed are available, Consult Magnaloy for price and availability.**

### ALUMINUM (4.00" Valve Spacing)

Part Number	Price
BM-ASP03X4-02-1/Z	\$127.00
BM-ASP03X4-03-1/Z	\$167.00
BM-ASP03X4-04-1/Z	\$214.00
BM-ASP03X4-05-1/Z	\$250.00
BM-ASP03X4-06-1/Z	\$293.00
BM-ASP03X4-07-1/Z	\$330.00
BM-ASP03X4-08-1/Z	\$372.00
BM-ASP03X4-09-1/Z	\$456.00
BM-ASP03X4-10-1/Z	\$500.00

### STEEL (4.00" Valve Spacing)

Part Number	Price
BM-SSP03X4-02-1/Z	\$266.00
BM-SSP03X4-03-1/Z	\$368.00
BM-SSP03X4-04-1/Z	\$448.00
BM-SSP03X4-05-1/Z	\$535.00
BM-SSP03X4-06-1/Z	\$607.00
BM-SSP03X4-07-1/Z	\$685.00
BM-SSP03X4-08-1/Z	\$766.00
BM-SSP03X4-09-1/Z	\$850.00
BM-SSP03X4-10-1/Z	\$937.00

### OPTIONS

- C Relief Valve Cavity C-10-2
- B Bottom PR - TK Ports
- G Gauge Ports
- S Relief Valve Cavity Sun T-10A
- I Station Isolation
- B, T, or M Thread Option

### ACCESSORIES (Ordered Separately)

- FK-A03** Flange Mounting Kit (S-12-7)
- BK-A03** "L" Bracket Kit (S-12-8)

### PRICE

### ALUMINUM

- \$35.00 per cavity
- \$35.00 per manifold
- \$25.00
- \$35.00 per cavity
- Quote
- \$40.00

### STEEL

- \$50.00 per cavity
- \$50.00 per manifold
- \$35.00
- \$50.00 per cavity
- Quote
- \$50.00

\$35.00 each (mounting holes are standard)

No Charge when requested (mounting are standard)

# D03 Standard Flow Bar Manifolds - Series



## Series

### ALUMINUM (2.00" Valve Spacing)

Part Number	Price
BM-ASS03X2-02-0/Z	\$111.00
BM-ASS03X2-03-0/Z	\$156.00
BM-ASS03X2-04-0/Z	\$198.00
BM-ASS03X2-05-0/Z	\$239.00

### STEEL (2.00" Valve Spacing)

Part Number	Price
BM-SSS03X2-02-0/Z	\$246.00
BM-SSS03X2-03-0/Z	\$334.00
BM-SSS03X2-04-0/Z	\$391.00
BM-SSS03X2-05-0/Z	\$430.00

**NOTE: X = Thread Type.** See Model Number Breakdown in our Product Catalog, page 50 for the appropriate code.

**Manifolds with more stations than listed are available, Consult Magnaloy for price and availability.**

### OPTIONS

- C Relief Valve Cavity C-10-2
- B Bottom PR - TK Ports
- G #4 SAE or 1/4 NPTF Gauge Ports
- I Station Isolation
- B, T, or M Thread Option

### ACCESSORIES (Ordered Separately)

- FK-A03 Flange Mounting Kit (S-12-7)
- BK-A03 "L" Bracket Kit (S-12-8)

### PRICE

### ALUMINUM

### STEEL

\$35.00 per cavity

\$50.00 per cavity

\$35.00 per manifold

\$50.00 per manifold

\$25.00

\$35.00

Quote

Quote

\$40.00

\$50.00

\$35.00 each (mounting holes are standard)

No Charge when requested (mounting are standard)

## Parallel

### ALUMINUM (2.13" Valve Spacing)

Part Number	Price
BMR-ASP03X2-01-1/Z	\$78.00
BMR-ASP03X2-02-1/Z	\$103.00
BMR-ASP03X2-03-1/Z	\$135.00
BMR-ASP03X2-04-1/Z	\$169.00
BMR-ASP03X2-05-1/Z	\$202.00
BMR-ASP03X2-06-1/Z	\$234.00
BMR-ASP03X2-07-1/Z	\$264.00
BMR-ASP03X2-08-1/Z	\$293.00
BMR-ASP03X2-09-1/Z	\$350.00
BMR-ASP03X2-10-1/Z	\$386.00
BMR-ASP03X2-11-1/Z	\$415.00
BMR-ASP03X2-12-1/Z	\$450.00
BMR-ASP03X2-13-1/Z	\$496.00
BMR-ASP03X2-14-1/Z	\$533.00

### STEEL (2.13" Valve Spacing)

Part Number	Price
BMR-SSP03X2-01-1/Z	\$163.00
BMR-SSP03X2-02-1/Z	\$248.00
BMR-SSP03X2-03-1/Z	\$342.00
BMR-SSP03X2-04-1/Z	\$404.00
BMR-SSP03X2-05-1/Z	\$517.00
BMR-SSP03X2-06-1/Z	\$592.00
BMR-SSP03X2-07-1/Z	\$676.00
BMR-SSP03X2-08-1/Z	\$814.00
BMR-SSP03X2-09-1/Z	\$1,030.00
BMR-SSP03X2-10-1/Z	\$1,159.00
BMR-SSP03X2-11-1/Z	\$1,400.00
BMR-SSP03X2-12-1/Z	\$1,525.00
BMR-SSP03X2-13-1/Z	\$1,611.00
BMR-SSP03X2-14-1/Z	\$1,734.00

**NOTE: X = Thread Type.** See Model Number Breakdown in our Product Catalog, page 52 for the appropriate code.

**Manifolds with more stations than listed are available. Consult Magnaloy for price and availability.**

### ALUMINUM (4.00" Valve Spacing)

Part Number	Price
BMR-ASP03X4-02-1/Z	\$118.00
BMR-ASP03X4-03-1/Z	\$170.00
BMR-ASP03X4-04-1/Z	\$220.00
BMR-ASP03X4-05-1/Z	\$283.00
BMR-ASP03X4-06-1/Z	\$346.00
BMR-ASP03X4-07-1/Z	\$388.00
BMR-ASP03X4-08-1/Z	\$482.00

### STEEL (4.00" Valve Spacing)

Part Number	Price
BMR-SSP03X4-02-1/Z	\$307.00
BMR-SSP03X4-03-1/Z	\$481.00
BMR-SSP03X4-04-1/Z	\$572.00
BMR-SSP03X4-05-1/Z	\$751.00
BMR-SSP03X4-06-1/Z	\$894.00
BMR-SSP03X4-07-1/Z	\$1,141.00
BMR-SSP03X4-08-1/Z	\$1,298.00

### OPTIONS

- C Relief Valve Cavity C-10-2
- B Bottom PR - TK Ports
- G4 #4 SAE Gauge Ports
- S Relief Valve Cavity Sun T-10A
- I Station Isolation
- B, T, or M Thread Option

### PRICE

### ALUMINUM

- \$35.00 per cavity
- \$35.00 per manifold
- \$25.00
- \$35.00 per cavity
- Quote
- \$40.00

### STEEL

- \$50.00 per cavity
- \$50.00 per manifold
- \$35.00
- \$50.00 per cavity
- Quote
- \$50.00

# D03 High Flow Retro Bar Manifolds



## Parallel

### ALUMINUM (2.13" Valve Spacing)

Part Number	Price
BMR-AHP03X2-01-1/Z	\$193.00
BMR-AHP03X2-02-1/Z	\$224.00
BMR-AHP03X2-03-1/Z	\$279.00
BMR-AHP03X2-04-1/Z	\$349.00
BMR-AHP03X2-05-1/Z	\$402.00
BMR-AHP03X2-06-1/Z	\$463.00
BMR-AHP03X2-07-1/Z	\$525.00
BMR-AHP03X2-08-1/Z	\$589.00
BMR-AHP03X2-09-1/Z	\$679.00
BMR-AHP03X2-10-1/Z	\$815.00
BMR-AHP03X2-11-1/Z	\$879.00
BMR-AHP03X2-12-1/Z	\$956.00

### STEEL (2.13" Valve Spacing)

Part Number	Price
BMR-SHP03X2-01-1/Z	\$343.00
BMR-SHP03X2-02-1/Z	\$508.00
BMR-SHP03X2-03-1/Z	\$644.00
BMR-SHP03X2-04-1/Z	\$765.00
BMR-SHP03X2-05-1/Z	\$933.00
BMR-SHP03X2-06-1/Z	\$1,048.00
BMR-SHP03X2-07-1/Z	\$1,243.00
BMR-SHP03X2-08-1/Z	\$1,486.00
BMR-SHP03X2-09-1/Z	\$1,834.00
BMR-SHP03X2-10-1/Z	\$2,004.00
BMR-SHP03X2-11-1/Z	\$2,221.00
BMR-SHP03X2-12-1/Z	\$2,382.00

**NOTE: X = Thread Type.** See Model Number Breakdown in our Product Catalog, page 54 for the appropriate code.

**Manifolds with more stations than listed are available. Consult Magnaloy for price and availability.**

### ALUMINUM (4.00" Valve Spacing)

Part Number	Price
BMR-AHP03X4-02-1/Z	\$298.00
BMR-AHP03X4-03-1/Z	\$408.00
BMR-AHP03X4-04-1/Z	\$467.00
BMR-AHP03X4-05-1/Z	\$562.00
BMR-AHP03X4-06-1/Z	\$715.00
BMR-AHP03X4-07-1/Z	\$728.00
BMR-AHP03X4-08-1/Z	\$899.00

### STEEL (4.00" Valve Spacing)

Part Number	Price
BMR-SHP03X4-02-1/Z	\$574.00
BMR-SHP03X4-03-1/Z	\$866.00
BMR-SHP03X4-04-1/Z	\$967.00
BMR-SHP03X4-05-1/Z	\$1,232.00
BMR-SHP03X4-06-1/Z	\$1,470.00
BMR-SHP03X4-07-1/Z	\$1,861.00
BMR-SHP03X4-08-1/Z	\$2,106.00

### OPTIONS

- C Relief Valve Cavity C-16-2
- B Bottom PR - TK Ports
- G4 #4 SAE Gauge Ports
- S Relief Valve Cavity Sun T-3A
- I Station Isolation
- B, T, or M Thread Option

### PRICE

### ALUMINUM

- \$35.00 per cavity
- \$35.00 per manifold
- \$25.00
- \$35.00 per cavity
- Quote
- \$40.00

### STEEL

- \$50.00 per cavity
- \$50.00 per manifold
- \$35.00
- \$50.00 per cavity
- Quote
- \$50.00

## Parallel

### ALUMINUM (3.25" Valve Spacing)

Part Number	Price
BM-ASP05X3-01-1/Z	\$97.00
BM-ASP05X3-02-1/Z	\$150.00
BM-ASP05X3-03-1/Z	\$205.00
BM-ASP05X3-04-1/Z	\$261.00
BM-ASP05X3-05-1/Z	\$316.00
BM-ASP05X3-06-1/Z	\$369.00
BM-ASP05X3-07-1/Z	\$424.00
BM-ASP05X3-08-1/Z	\$536.00

### STEEL (3.25" Valve Spacing)

Part Number	Price
BM-SSP05X3-01-1/Z	\$256.00
BM-SSP05X3-02-1/Z	\$361.00
BM-SSP05X3-03-1/Z	\$445.00
BM-SSP05X3-04-1/Z	\$553.00
BM-SSP05X3-05-1/Z	\$672.00
BM-SSP05X3-06-1/Z	\$827.00

**NOTE: X = Thread Type.** See Model Number Breakdown in our Product Catalog, page 56 for the appropriate code.

**Manifolds with more stations than listed are available. Consult Magnaloy for price and availability.**

### ALUMINUM (5.00" Valve Spacing)

Part Number	Price
BM-ASP05X5-02-1/Z	\$173.00
BM-ASP05X5-03-1/Z	\$247.00
BM-ASP05X5-04-1/Z	\$315.00
BM-ASP05X5-05-1/Z	\$384.00
BM-ASP05X5-06-1/Z	\$451.00

### STEEL (5.00" Valve Spacing)

Part Number	Price
BM-SSP05X5-02-1/Z	\$413.00
BM-SSP05X5-03-1/Z	\$558.00
BM-SSP05X5-04-1/Z	\$738.00
BM-SSP05X5-05-1/Z	\$900.00
BM-SSP05X5-06-1/Z	\$1,051.00

#### OPTIONS

- C Relief Valve Cavity C-10-2
- B Bottom PR - TK Ports
- G #4 SAE or 1/4" NPTF Gauge Ports
- G6 #6 SAE Gauge Ports
- S Relief Valve Cavity Sun T-3A
- I Station Isolation
- B, T, or M Thread Option

#### PRICE

#### ALUMINUM

- \$35.00 per cavity
- \$35.00 per manifold
- \$25.00
- \$25.00
- \$35.00 per cavity
- Quote
- \$40.00

#### STEEL

- \$50.00 per cavity
- \$50.00 per manifold
- \$35.00
- \$35.00
- \$50.00 per cavity
- Quote
- \$50.00

#### ACCESSORIES (Ordered Separately)

- FK-A05 Flange Mounting Kit (S-12-9)
- BK-A05 "L" Bracket Kit (S-12-10)

\$38.00 each (mounting holes are standard)

No Charge when requested (mounting are standard)

## D05 Std Flow Retro Bar Manifolds - Series

### SERIES - ALUMINUM (3.25" Valve Spacing)

Part Number	Price
BMR-ASS05X3-02-1/Z	\$303.00
BMR-ASS05X3-03-1/Z	\$386.00
BMR-ASS05X3-04-1/Z	\$526.00

### STEEL (3.25" Valve Spacing)

Part Number	Price
BMR-SSS05X3-02-1/Z	\$787.00
BMR-SSS05X3-03-1/Z	\$937.00
BMR-SSS05X3-04-1/Z	\$1,368.00

### ALUMINUM (5.00" Valve Spacing)

Part Number	Price
BMR-ASS05X5-02-1/Z	\$377.00
BMR-ASS05X5-03-1/Z	\$526.00
BMR-ASS05X5-04-1/Z	\$722.00

### STEEL (5.00" Valve Spacing)

Part Number	Price
BMR-SSS05X5-02-1/Z	\$1,015.00
BMR-SSS05X5-03-1/Z	\$1,258.00
BMR-SSS05X5-04-1/Z	\$1,650.00

# D05 Std Flow Retro Bar Manifolds - Series...



## OPTIONS

- C Relief Valve Cavity C-10-2, "P" IN NOSE
- G4 #4 SAE or 1/4" NPTF Gauge Ports
- S Relief Valve Cavity Sun T-3A, "P" IN THE NOSE
- T, or M Thread Option (BSPT OR METRIC THREAD)
- B Thread Option (BSPP THREAD)

## PRICE

- ALUMINUM**
- \$35.00 per cavity
  - \$25.00
  - \$35.00 per cavity
  - \$40.00
  - \$35.00

## STEEL

- \$50.00 per cavity
- \$35.00
- \$50.00 per cavity
- \$40.00
- \$35.00

## ACCESSORIES (Ordered Separately)

BKR-A05 "L" Bracket Kit

No Charge when requested (mounting are standard)

# D05 High Flow Bar Manifolds - Parallel

## Parallel

### ALUMINUM (3.25" Valve Spacing)

Part Number	Price
BM-AHP05X3-01-1/Z	\$145.00
BM-AHP05X3-02-1/Z	\$213.00
BM-AHP05X3-03-1/Z	\$320.00
BM-AHP05X3-04-1/Z	\$404.00
BM-AHP05X3-05-1/Z	\$482.00
BM-AHP05X3-06-1/Z	\$568.00
BM-AHP05X3-07-1/Z	\$664.00

### STEEL (3.25" Valve Spacing)

Part Number	Price
BM-SHP05X3-01-1/Z	\$345.00
BM-SHP05X3-02-1/Z	\$510.00
BM-SHP05X3-03-1/Z	\$767.00
BM-SHP05X3-04-1/Z	\$967.00
BM-SHP05X3-05-1/Z	\$1,157.00
BM-SHP05X3-06-1/Z	\$1,361.00
BM-SHP05X3-07-1/Z	\$1,592.00

**NOTE: X = Thread Type.** See Model Number Breakdown in our Product Catalog, page 60 for the appropriate code.

**Manifolds with more stations than listed are available. Consult Magnaloy for price and availability.**

### ALUMINUM (5.00" Valve Spacing)

Part Number	Price
BM-AHP05X5-02-1/Z	\$255.00
BM-AHP05X5-03-1/Z	\$369.00
BM-AHP05X5-04-1/Z	\$506.00
BM-AHP05X5-05-1/Z	\$614.00
BM-AHP05X5-06-1/Z	\$754.00
BM-AHP05X5-07-1/Z	\$925.00

### STEEL (5.00" Valve Spacing)

Part Number	Price
BM-SHP05X5-02-1/Z	\$610.00
BM-SHP05X5-03-1/Z	\$928.00
BM-SHP05X5-04-1/Z	\$1,210.00
BM-SHP05X5-05-1/Z	\$1,473.00
BM-SHP05X5-06-1/Z	\$1,854.00
BM-SHP05X5-07-1/Z	\$2,149.00

## OPTIONS

- C Relief Valve Cavity C-10-2
- B Bottom PR - TK Ports
- L L Ports
- G #4 SAE or 1/4" NPTF Gauge Ports
- G6 #6 SAE Gauge Ports
- O Oversized A and B Ports (N/A Alt. A)
- S Relief Valve Cavity Sun T-3A
- I Station Isolation
- B, T, or M Thread Option

## PRICE

- ALUMINUM**
- \$35.00 per cavity
  - \$35.00 per manifold
  - \$20.00 per station
  - \$25.00
  - \$25.00
  - \$9.00 per manifold
  - \$35.00 per cavity
  - Quote
  - \$40.00

## STEEL

- \$50.00 per cavity
- \$50.00 per manifold
- \$27.00 per station
- \$35.00
- \$35.00
- \$11.00 per manifold
- \$50.00 per cavity
- Quote
- \$50.00

## ACCESSORIES (Ordered Separately)

BK-A05 "L" Bracket Kit (S-12-10)

No Charge when requested (mounting are standard)

## D05E Alt. A

### ALUMINUM (3.25" Valve Spacing)

Part Number	Price
BM-AHP5EX3-01-1/Z	\$178.00
BM-AHP5EX3-02-1/Z	\$277.00
BM-AHP5EX3-03-1/Z	\$405.00
BM-AHP5EX3-04-1/Z	\$510.00
BM-AHP5EX3-05-1/Z	\$610.00
BM-AHP5EX3-06-1/Z	\$717.00
BM-AHP5EX3-07-1/Z	\$834.00

### STEEL (3.25" Valve Spacing)

Part Number	Price
BM-SHP5EX3-01-1/Z	\$386.00
BM-SHP5EX3-02-1/Z	\$601.00
BM-SHP5EX3-03-1/Z	\$910.00
BM-SHP5EX3-04-1/Z	\$1,147.00
BM-SHP5EX3-05-1/Z	\$1,372.00
BM-SHP5EX3-06-1/Z	\$1,614.00
BM-SHP5EX3-07-1/Z	\$1,882.00

**NOTE: X = Thread Type.** See Model Number Breakdown in our Product Catalog, page 62 or 64 for the appropriate code.

**Manifolds with more stations than listed are available. Consult Magnaloy for price and availability.**

### ALUMINUM (5.00" Valve Spacing)

Part Number	Price
BM-AHP5EX5-02-1/Z	\$318.00
BM-AHP5EX5-03-1/Z	\$455.00
BM-AHP5EX5-04-1/Z	\$612.00
BM-AHP5EX5-05-1/Z	\$742.00
BM-AHP5EX5-06-1/Z	\$903.00
BM-AHP5EX5-07-1/Z	\$1,096.00

### STEEL (5.00" Valve Spacing)

Part Number	Price
BM-SHP5EX5-02-1/Z	\$720.00
BM-SHP5EX5-03-1/Z	\$1,077.00
BM-SHP5EX5-04-1/Z	\$1,398.00
BM-SHP5EX5-05-1/Z	\$1,696.00
BM-SHP5EX5-06-1/Z	\$2,071.00
BM-SHP5EX5-07-1/Z	\$2,452.00

## D05H Alt. B

### ALUMINUM (3.25" Valve Spacing)

Part Number	Price
BM-AHP5HX3-01-1/Z	\$178.00
BM-AHP5HX3-02-1/Z	\$277.00
BM-AHP5HX3-03-1/Z	\$405.00
BM-AHP5HX3-04-1/Z	\$510.00
BM-AHP5HX3-05-1/Z	\$610.00
BM-AHP5HX3-06-1/Z	\$717.00
BM-AHP5HX3-07-1/Z	\$834.00

### STEEL (3.25" Valve Spacing)

Part Number	Price
BM-SHP5HX3-01-1/Z	\$386.00
BM-SHP5HX3-02-1/Z	\$601.00
BM-SHP5HX3-03-1/Z	\$910.00
BM-SHP5HX3-04-1/Z	\$1,147.00
BM-SHP5HX3-05-1/Z	\$1,372.00
BM-SHP5HX3-06-1/Z	\$1,614.00
BM-SHP5HX3-07-1/Z	\$1,881.00

### ALUMINUM (5.00" Valve Spacing)

Part Number	Price
BM-AHP5HX5-02-1/Z	\$318.00
BM-AHP5HX5-03-1/Z	\$455.00
BM-AHP5HX5-04-1/Z	\$611.00
BM-AHP5HX5-05-1/Z	\$742.00
BM-AHP5HX5-06-1/Z	\$903.00
BM-AHP5HX5-07-1/Z	\$1,095.00

### STEEL (5.00" Valve Spacing)

Part Number	Price
BM-SHP5HX5-02-1/Z	\$702.00
BM-SHP5HX5-03-1/Z	\$1,077.00
BM-SHP5HX5-04-1/Z	\$1,398.00
BM-SHP5HX5-05-1/Z	\$1,696.00
BM-SHP5HX5-06-1/Z	\$2,071.00
BM-SHP5HX5-07-1/Z	\$2,452.00

# D05E & D05H High Flow Bar Manifolds...



## OPTIONS

- C Relief Valve Cavity C-10-2
- B Bottom PR - TK Ports
- G #4 SAE or 1/4" NPTF Gauge Ports
- G6 #6 SAE Gauge Ports
- O Oversized A and B Ports (N/A Alt. A)
- S Relief Valve Cavity Sun T-3A
- I Station Isolation
- B, T, or M Thread Option

## ACCESSORIES (Ordered Separately)

BK-A05 "L" Bracket Kit (S-12-10)

## PRICE

## ALUMINUM

- \$35.00 per cavity
- \$35.00 per manifold
- \$25.00
- \$25.00
- \$9.00 per manifold
- \$35.00 per cavity
- Quote
- \$40.00

## STEEL

- \$50.00 per cavity
- \$50.00 per manifold
- \$35.00
- \$35.00
- \$11.00 per manifold
- \$50.00 per cavity
- Quote
- \$50.00

No Charge when requested (mounting are standard)

# D08 Bar Manifolds - Parallel

## Parallel

### ALUMINUM (5.25" Valve Spacing)

Part Number	Price
BM-ASP08X5-01-0/Z	\$295.00
BM-ASP08X5-02-0/Z	\$523.00
BM-ASP08X5-03-0/Z	\$700.00
BM-ASP08X5-04-0/Z	\$893.00
BM-ASP08X5-05-0/Z	\$1,088.00
BM-ASP08X5-06-0/Z	\$1,282.00

### STEEL (5.25" Valve Spacing)

Part Number	Price
BM-SSP08X5-01-0/Z	\$741.00
BM-SSP08X5-02-0/Z	\$1,242.00
BM-SSP08X5-03-0/Z	\$1,744.00
BM-SSP08X5-04-0/Z	\$2,168.00
BM-SSP08X5-05-0/Z	\$2,732.00
BM-SSP08X5-06-0/Z	\$3,098.00

NOTE: X = Thread Type. See Model Number Breakdown in our Product Catalog, page 66 for the appropriate code.

### ALUMINUM (7.00" Valve Spacing)

Part Number	Price
BM-ASP08X7-02-0/Z	\$558.00
BM-ASP08X7-03-0/Z	\$768.00
BM-ASP08X7-04-0/Z	\$996.00

### STEEL (7.00" Valve Spacing)

Part Number	Price
BM-SSP08X7-02-0/Z	\$1,432.00
BM-SSP08X7-03-0/Z	\$1,955.00
BM-SSP08X7-04-0/Z	\$2,468.00

Manifolds with more stations than listed are available. Consult Magnaloy for price and availability.

## OPTIONS

- C Relief Valve Cavity C-10-2
- B Bottom PR - TK Ports
- G #4 SAE or 1/4" NPTF Gauge Ports
- G6 #6 SAE Gauge Ports
- P Pilot Pressure
- S Relief Valve Cavity Sun T-3A
- I Station Isolation
- B, T, or M Thread Option

## ACCESSORIES (Ordered Separately)

BK-A08 "L" Bracket Kit (S-12-10)

## PRICE

## ALUMINUM

- \$35.00 per cavity
- \$35.00 per manifold
- \$25.00
- \$25.00
- \$33.00 per manifold
- \$35.00 per cavity
- Quote
- \$40.00

## STEEL

- \$50.00 per cavity
- \$50.00 per manifold
- \$35.00
- \$35.00
- \$38.00 per manifold
- \$50.00 per cavity
- Quote
- \$50.00

No Charge when requested (mounting are standard)

## Parallel

### ALUMINUM (5.25" Valve Spacing)

Part Number	Price
BMR-AHP08X5-01-1/Z	\$498.00
BMR-AHP08X5-02-1/Z	\$772.00
BMR-AHP08X5-03-1/Z	\$1,064.00
BMR-AHP08X5-04-1/Z	\$1,455.00
BMR-AHP08X5-05-1/Z	\$1,777.00
BMR-AHP08X5-06-1/Z	\$2,102.00

### STEEL (5.25" Valve Spacing)

Part Number	Price
BMR-SHP08X5-01-1/Z	\$835.00
BMR-SHP08X5-02-1/Z	\$1,407.00
BMR-SHP08X5-03-1/Z	\$1,976.00
BMR-SHP08X5-04-1/Z	\$2,542.00
BMR-SHP08X5-05-1/Z	\$3,072.00
BMR-SHP08X5-06-1/Z	\$3,548.00

**NOTE: X = Thread Type.** See Model Number Breakdown in our Product Catalog, page 68 for the appropriate code.

**Manifolds with more stations than listed are available. Consult Magnaloy for price and availability.**

### ALUMINUM (7.00" Valve Spacing)

Part Number	Price
BMR-AHP08X7-02-1/Z	\$892.00
BMR-AHP08X7-03-1/Z	\$1,275.00
BMR-AHP08X7-04-1/Z	\$1,764.00
BMR-AHP08X7-05-1/Z	\$2,128.00

### STEEL (7.00" Valve Spacing)

Part Number	Price
BMR-SHP08X7-02-1/Z	\$1,634.00
BMR-SHP08X7-03-1/Z	\$2,469.00
BMR-SHP08X7-04-1/Z	\$3,194.00
BMR-SHP08X7-05-1/Z	\$3,937.00

#### OPTIONS

- C Relief Valve Cavity C-16-2
- B Bottom PR - TK Ports
- G4 #4 SAE or 1/4" NPTF Gauge Ports
- P Pilot Pressure (Individual per station)
- S Relief Valve Cavity Sun T-16A
- I Station Isolation
- B, T, or M Thread Option

#### PRICE

#### ALUMINUM

- \$35.00 per cavity
- \$35.00 per manifold
- \$25.00
- \$40.00 per station
- \$35.00 per cavity
- Quote**
- \$40.00

#### STEEL

- \$50.00 per cavity
- \$50.00 per manifold
- \$35.00
- \$60.00 per station
- \$50.00 per cavity
- Quote**
- \$50.00

## D08 Retro Bar Manifolds - Series

### Series

### ALUMINUM (5.25" Valve Spacing)

Part Number	Price
BMR-ASS08X5-02-1/Z	\$969.00
BMR-ASS08X5-03-1/Z	\$1,615.00

### STEEL (5.25" Valve Spacing)

Part Number	Price
BMR-SSS08X5-02-1/Z	\$2,334.00
BMR-SSS08X5-03-1/Z	\$3,520.00

**NOTE: X = Thread Type.** See Model Number Breakdown in our Product Catalog, page 70 for the appropriate code.

#### OPTIONS

- G4 #4 SAE or 1/4" NPTF Gauge Ports
- B, T, or M Thread Option

#### ACCESSORIES (Ordered Separately)

**BKR-A08** "L" Bracket Kit

#### PRICE

#### ALUMINUM

- \$25.00
- \$50.00

#### STEEL

- \$35.00
- \$50.00

**No Charge** when requested (mntg holes are standard)

# D08 Retro Bar Manifolds - Series...



## Series

### ALUMINUM (7.00" Valve Spacing)

Part Number	Price
BMR-ASS08X7-02-1/Z	\$1,202.00
BMR-ASS08X7-03-1/Z	\$1,761.00

### STEEL (7.00" Valve Spacing)

Part Number	Price
BMR-SSS08X7-02-1/Z	\$2,776.00
BMR-SSS08X7-03-1/Z	\$4,064.00

#### OPTIONS

-G4 #4 SAE or 1/4" NPTF Gauge Ports

-B, T, or M Thread Option

**ACCESSORIES** (Ordered Separately)

**BKR-A08** "L" Bracket Kit

#### PRICE

#### ALUMINUM

#### STEEL

\$25.00

\$35.00

\$40.00

\$50.00

**No Charge** when requested (mntg holes are standard)

**NOTE: X = Thread Type.** See Model Number Breakdown in our Product Catalog, page 70 for the appropriate code.

**Manifolds with more stations than listed are available. Consult Magnaloy for price and availability.**

Series

**D05 TANK LINE FEED  
CONTROL MANIFOLD**

Part Number	Price
IC-A05S11-0	\$299.00
IC-S05S11-0	\$672.00
IC-A05P11-0	\$299.00
IC-S05P11-0	\$672.00

**D05 SOLENOID ACTIVATED  
REGENERATION MODULE**

Part Number	Price
IC-A05S31-0	\$299.00
IC-S05S31-0	\$804.00
IC-A05P31-0	\$299.00
IC-S05P31-0	\$804.00

**D05 FEED CONTROL -  
CYLINDER PORT METER OUT**

Part Number	Price
IC-A05S41-0	\$299.00
IC-S05S41-0	\$804.00
IC-A05P41-0	\$299.00
IC-S05P41-0	\$804.00

**D05 FEED CONTROL -  
CYLINDER PORT METER IN**

Part Number	Price
IC-A05S42-0	\$337.00
IC-S05S42-0	\$906.00
IC-A05P42-0	\$337.00
IC-S05P42-0	\$906.00

**D08 HI-LO PRESSURE OPERATED  
UNLOADING MANIFOLD**

Part Number	Price
IC-A08S21-0	\$1,435.00
IC-S08S21-0	\$2,840.00
IC-A08P21-0	\$1,435.00
IC-S08P21-0	\$2,840.00

**MOUNTING BRACKET KIT  
FOR D08 IC UNLOADING MANIFOLD**

Part Number	Price
BK-IC08	\$62.00

**OPTIONS**

-B, T, or M Thread Option

<b>PRICE</b>	<b>ALUMINUM</b>	<b>STEEL</b>
	<b>\$40.00</b>	<b>\$50.00</b>

## D03 Subplates - SUPER SAVER SUBPLATE

### All 4 Sides Ported

Part Number	Price
SP-A03X4-1/PZ	\$44.00
SP-A03X6-1/PZ	\$44.00
SP-S03X4-1/PZ	\$69.00
SP-S03X6-1/PZ	\$69.00

### All 4 Ports on Bottom

Part Number	Price
SP-A03X4-1/DZ	\$39.00
SP-A03X6-1/DZ	\$39.00
SP-S03X4-1/DZ	\$62.00
SP-S03X6-1/DZ	\$62.00

**NOTE: X = Thread Type.** See Model Number Breakdown in our Product Catalog, page 77 for the appropriate code.

## D03 Subplates - Standard Side Ported Subplates

### A & B Ports on opposite side of P & T Ports

Part Number	Price
SP-A03X6-1/Z	\$66.00
SP-A03X8-1/Z	\$66.00
SP-S03X6-1/Z	\$90.00
SP-S03X8-1/Z	\$90.00

### A & B Ports on opposite sides, P & T Ports w/ Common C-10-2 Relief Cavity

Part Number	Price
SP-A03X6-1/C	\$87.00
SP-A03X8-1/C	\$87.00
SP-S03X6-1/C	\$121.00
SP-S03X8-1/C	\$121.00

**NOTE: X = Thread Type.** See Model Number Breakdown in our Product Catalog, page 81 for the appropriate code.

### A & B Ports on one side, P & T Ports on opposite side & bottom

Part Number	Price
SP-A03X6-1/BZ	\$72.00
SP-A03X8-1/BZ	\$72.00
SP-S03X6-1/BZ	\$100.00
SP-S03X8-1/BZ	\$100.00

### A & B Ports on one side, P & T Ports on opposite side & bottom with C-10-2 relief cavity

Part Number	Price
SP-A03X6-1/BC	\$93.00
SP-A03X8-1/BC	\$93.00
SP-S03X6-1/BC	\$134.00
SP-S03X8-1/BC	\$134.00

### A & B Ports on one side, P & T Ports on opposite side with Sun T-10A relief cavity

Part Number	Price
SP-A03X6-1/S	\$87.00
SP-A03X8-1/S	\$87.00
SP-S03X6-1/S	\$121.00
SP-S03X8-1/S	\$121.00

### A & B Ports on one side, P & T Ports on opposite side & bottom with Sun T-10A relief cavity

Part Number	Price
SP-A03X6-1/BS	\$93.00
SP-A03X8-1/BS	\$93.00
SP-S03X6-1/BS	\$134.00
SP-S03X8-1/BS	\$134.00

### OPTIONS

-G #4 SAE or 1/4" NPTF Gauge Ports

-B, T, or M Thread Option

### PRICE ALUMINUM STEEL

\$25.00 \$35.00

\$40.00 \$50.00

## D05 Subplates - SUPER SAVER SUBPLATE

### All 4 Sides Ported

Part Number	Price
SP-A05X6-1/PZ	\$66.00
SP-A05X8-1/PZ	\$66.00
SP-S05X6-1/PZ	\$110.00
SP-S05X8-1/PZ	\$107.00

### All 4 Ports on Bottom

Part Number	Price
SP-A05X6-1/DZ	\$62.00
SP-A05X8-1/DZ	\$62.00
SP-S05X6-1/DZ	\$93.00
SP-S05X8-1/DZ	\$91.00

**NOTE: X = Thread Type.** See Model Number Breakdown in our Product Catalog, page 79 for the appropriate code.

## D05 Subplates (Continued) - Standard Side Ported

### A & B Ports on opposite side of P & T Ports

Part Number	Price
SP-A05X6-1/Z	\$76.00
SP-A05X8-1/Z	\$76.00
SP-S05X6-1/Z	\$105.00
SP-S05X8-1/Z	\$102.00

### A & B Ports on one side, P & T Ports on opposite side & bottom

Part Number	Price
SP-A05X6-1/BZ	\$84.00
SP-A05X8-1/BZ	\$84.00
SP-S05X6-1/BZ	\$122.00
SP-S05X8-1/BZ	\$119.00

### A & B Ports on one side, P & T Ports on opposite side with Sun T-10A relief cavity

Part Number	Price
SP-A05X6-1/S	\$101.00
SP-A05X8-1/S	\$101.00
SP-S05X6-1/S	\$145.00
SP-S05X8-1/S	\$141.00

### A & B Ports on opposite sides, P & T Ports w/Common C-10-2 Relief Cavity

Part Number	Price
SP-A05X6-1/C	\$101.00
SP-A05X8-1/C	\$101.00
SP-S05X6-1/C	\$145.00
SP-S05X8-1/C	\$141.00

### A & B Ports on one side, P & T Ports on opposite side & bottom with C-10-2 relief cavity

Part Number	Price
SP-A05X6-1/BC	\$108.00
SP-A05X8-1/BC	\$108.00
SP-S05X6-1/BC	\$162.00
SP-S05X8-1/BC	\$157.00

### A & B Ports on one side, P & T Ports on opposite side & bottom with Sun T-10A relief cavity

Part Number	Price
SP-A05X6-1/BS	\$108.00
SP-A05X8-1/BS	\$108.00
SP-S05X6-1/BS	\$162.00
SP-S05X8-1/BS	\$157.00

**NOTE: X = Thread Type.** See Model Number Breakdown in our Product Catalog, page 82 for the appropriate code.

### OPTIONS

- G #4 SAE or 1/4" NPTF Gauge Ports
- B, T, or M Thread Option

PRICE	ALUMINUM	STEEL
	\$25.00	\$35.00
	\$40.00	\$50.00

## D05 Subplates - High Flow Ported Subplates

### A & B Ports on opposite side of P & T Ports

Part Number	Price
SP-AH05X12-1/Z	\$77.00
SP-SH05X12-1/Z	\$136.00

### A & B Ports on one side, P & T Ports on opposite side & bottom

Part Number	Price
SP-AH05X12-1/BZ	\$87.00
SP-SH05X12-1/BZ	\$153.00

### A & B Ports on one side, P & T Ports on opposite side with Sun T-10A relief cavity

Part Number	Price
SP-AH05X12-1/S	\$102.00
SP-SH05X12-1/S	\$180.00

### A & B Ports on opposite sides, P & T Ports w/Common C-10-2 Relief Cavity

Part Number	Price
SP-AH05X12-1/C	\$102.00
SP-SH05X12-1/C	\$175.00

### A & B Ports on one side, P & T Ports on opposite side & bottom with C-10-2 relief cavity

Part Number	Price
SP-AH05X12-1/BC	\$112.00
SP-SH05X12-1/BC	\$188.00

### A & B Ports on one side, P & T Ports on opposite side & bottom with Sun T-10A relief cavity

Part Number	Price
SP-AH05X12-1/BS	\$112.00
SP-SH05X12-1/BS	\$193.00

**NOTE: X = Thread Type.** See Model Number Breakdown in our Product Catalog, page 83 for the appropriate code.

### OPTIONS

- G4 #4 SAE or 1/4" NPTF Gauge Ports
- G6 #6 SAE Gauge Ports
- B, T, or M Thread Option

PRICE	ALUMINUM	STEEL
	\$25.00	\$35.00
	\$25.00	\$35.00
	\$40.00	\$50.00

# Subplates / Cover Plates



## D08 Subplates - Standard Side Ported

### A & B Ports on opposite side of P & T Ports

Part Number	Price
SP-A08X12-1/Z	\$135.00
SP-A08X16-1/Z	\$135.00
SP-S08X12-1/Z	\$189.00
SP-S08X16-1/Z	\$189.00

### A & B Ports on opposite sides, P & T Ports w/Common C-10-2 Relief Cavity

Part Number	Price
SP-A08X12-1/C	\$172.00
SP-A08X16-1/C	\$172.00
SP-S08X12-1/C	\$254.00
SP-S08X16-1/C	\$248.00

**NOTE: X = Thread Type.** See Model Number Breakdown in our Product Catalog, page 84 for the appropriate code.

### A & B Ports on one side, P & T Ports on opposite side & bottom

Part Number	Price
SP-A08X12-1/BZ	\$175.00
SP-A08X16-1/BZ	\$175.00
SP-S08X12-1/BZ	\$210.00
SP-S08X16-1/BZ	\$204.00

### A & B Ports on one side, P & T Ports on opposite side & bottom with C-10-2 relief cavity

Part Number	Price
SP-A08X12-1/BC	\$199.00
SP-A08X16-1/BC	\$199.00
SP-S08X12-1/BC	\$270.00
SP-S08X16-1/BC	\$263.00

### A & B Ports on one side, P & T Ports on opposite side with Sun T-10A relief cavity

Part Number	Price
SP-A08X12-1/S	\$172.00
SP-A08X16-1/S	\$172.00
SP-S08X12-1/S	\$254.00
SP-S08X16-1/S	\$248.00

### A & B Ports on one side, P & T Ports on opposite side & bottom with Sun T-10A relief cavity

Part Number	Price
SP-A08X12-1/BS	\$199.00
SP-A08X16-1/BS	\$199.00
SP-S08X12-1/BS	\$270.00
SP-S08X16-1/BS	\$270.00

### OPTIONS

- G #4 SAE or 1/4" NPTF Gauge Ports
- G6 #6 SAE or Gauge Ports
- B, T, or M Thread Option

### PRICE

### ALUMINUM

### STEEL

\$25.00

\$35.00

\$25.00

\$35.00

\$40.00

\$50.00

## Cover Plates

### D03 Cover Plates

Part Number	Price
CP-ASP03E-1/Z	\$23.00
CP-ASP03M-1/Z	\$23.00
CP-SSP03E-1/Z	\$31.00
CP-SSP03M-1/Z	\$88.00
CP-ASP03E-1/G	\$24.00
CP-ASP03M-1/G	\$67.00
CP-SSP03E-1/G	\$36.00
CP-SSP03M-1/G	\$93.00
CP-ASS03E-1/Z	\$27.00
CP-ASS03M-1/Z	\$26.00
CP-SSS03E-1/Z	\$39.00
CP-SSS03M-1/Z	\$39.00

### D05 Cover Plates

Part Number	Price
CP-ASP05E-1/Z	\$25.00
CP-ASP05M-1/Z	\$25.00
CP-SSP05E-1/Z	\$33.00
CP-SSP05M-1/Z	\$91.00
CP-ASP05E-1/G	\$28.00
CP-ASP05M-1/G	\$72.00
CP-SSP05E-1/G	\$39.00
CP-SSP05M-1/G	\$39.00
CP-ASS05E-1/Z	\$35.00
CP-ASS05M-1/Z	\$34.00
CP-SSS05E-1/Z	\$48.00
CP-SSS05M-1/Z	\$48.00

### D08 Cover Plates

Part Number	Price
CP-ASP08E-1/Z	\$74.00
CP-ASP08M-1/Z	\$118.00
CP-SSP08E-1/Z	\$110.00
CP-SSP08M-1/Z	\$110.00
CP-ASP08E-1/G	\$89.00
CP-ASP08M-1/G	\$133.00
CP-SSP08E-1/G	\$127.00
CP-SSP08M-1/G	\$127.00
CP-ASS08E-1/Z	\$139.00
CP-ASS08M-1/Z	\$134.00
CP-SSS08E-1/Z	\$195.00
CP-SSS08M-1/Z	\$195.00

## D08 Subplates - Standard Side Ported

### FLOW CONTROL VALVE PATTERN ADAPTOR

Part Number	Price
VA-A03/05-EBA-0	\$79.00
VA-S03/05-EBA-0	\$152.00
VA-A05/08-EAA-0	\$180.00
VA-S05/08-EAA-0	\$295.00

### DIRECTIONAL VALVE PATTERN ADAPTOR

Part Number	Price
VA-AF6/F7-EAA-0	\$123.00
VA-SF6/F7-EAA-0	\$237.00

### DIRECTIONAL VALVE PATTERN ADAPTOR

Part Number	Price
VA-AP8/P0-EAA-0	\$137.00
VA-SP8/P0-EAA-0	\$230.00

#### OPTIONS

-M Thread Option

#### PRICE

ALUMINUM

\$40.00

STEEL

\$50.00

## Isolation Plugs

### ISOLATION PLUGS (DISCONTINUED - CALL FOR QUOTE & AVAILABILITY)

#### ALUMINUM MANIFOLDS

Part Number	Usage	Passage	Price
IP-AP03-0	Old Style D03	"P" & "T"	Consult Factory
IP-AP03-1	D03 High Flow	"P" & "T"	Consult Factory
IP-AP03-1	D03 Std. Flow Retro Design	"P" & "T"	Consult Factory
IP-AP05-1	D03 High Flow Retro Design	"P"	Consult Factory
IP-SP08-1	D03 High Flow Retro Design	"T"	Consult Factory
IP-AP05-0	D05 Std. Flow	"P"	Consult Factory
IP-AT05-0	D05 Std. Flow	"T"	Consult Factory
IP-AP08-0	D05 High Flow & D08 Std. Flow	"P"	Consult Factory
IP-AT05-1	D05 High Flow	"T"	Consult Factory
IP-AT08-0	D08 Std. Flow	"T"	Consult Factory
IP-ST08-0	D08 High Flow Retro Design	"P"	Consult Factory
N/A	D08 High Flow Retro Design	"T"	--

#### STEEL MANIFOLDS

Part Number	Usage	Passage	Price
IP-SP03-0	Old Style D03	"P" & "T"	Consult Factory
IP-SP03-1	D03 High Flow & Std. Flow Retro Design	"P" & "T"	Consult Factory
IP-SP05-0	D03 High Flow Retro Design & D05 Std. Flow	"P"	Consult Factory
IP-SP08-0	D03 High Flow Retro Design	"T"	Consult Factory
IP-ST05-0	D05 Std. Flow	"T"	Consult Factory
IP-SP08-0	D05 High Flow & D08 Std. Flow	"P"	Consult Factory
IP-ST05-1	D05 High Flow	"T"	Consult Factory
IP-ST08-0	D08 Std. Flow	"T"	Consult Factory
IP-ST08-0	D08 High Flow Retro Design	"P"	Consult Factory
N/A	D08 High Flow Retro Design	"T"	--

## Manifold Accessories

### PILOT ADAPTOR MODULE DRAIN OR AIR PILOT SUPPLY (For Vickers DG 18 Air Piloted Directional)

Part Number	Price
MA-A05ZZ-PA-ZZ-0	\$75.00
MA-S05ZZ-PA-ZZ-0	\$148.00

### UNLOADING (VENTING) MODULES

Part Number	Price
MA-A05ZZ-UM-ZZ-0	\$62.00
MA-S05ZZ-UM-ZZ-0	\$120.00

### ORIFICE PLATE

Part Number	Price
MA-A05ZZ-OP-ZZ-0	\$52.00
MA-S05ZZ-OP-ZZ-0	\$66.00

### D03 TAPPING PLATE

Part Number	Price
MA-A03ZZ-TP-ZZ-1	\$26.00
MA-S03ZZ-TP-ZZ-1	\$34.00
MA-A034X-TP-PP-1	\$44.00
MA-S034X-TP-PP-1	\$68.00
MA-A034X-TP-PT-1	\$35.00
MA-S034X-TP-PT-1	\$51.00
MA-A034X-TP-AB-1	\$35.00
MA-S034X-TP-AB-1	\$51.00

### D05 TAPPING PLATE

Part Number	Price
MA-A05ZZ-TP-ZZ-1	\$38.00
MA-S05ZZ-TP-ZZ-1	\$56.00
MA-A054X-TP-PP-1	\$55.00
MA-S054X-TP-PP-1	\$91.00
MA-A054X-TP-PT-1	\$47.00
MA-S054X-TP-PT-1	\$74.00
MA-A054X-TP-AB-1	\$47.00
MA-S054X-TP-AB-1	\$74.00

### D08 TAPPING PLATE

Part Number	Price
MA-A08ZZ-TP-ZZ-1	\$94.00
MA-S08ZZ-TP-ZZ-1	\$145.00
MA-A084X-TP-PP-1	\$119.00
MA-S084X-TP-PP-1	\$194.00
MA-A084X-TP-PT-1	\$119.00
MA-S084X-TP-PT-1	\$194.00
MA-A084X-TP-AB-1	\$119.00
MA-S084X-TP-AB-1	\$179.00
MA-A084X-TP-PS-1	\$119.00
MA-S084X-TP-PS-1	\$179.00

### OPTIONS

-B, T, or M Thread Option

### PRICE

### ALUMINUM

\$40.00

### STEEL

\$50.00

## Relief Valve Cartridges

### D03 HIGH FLOW MANIFOLDS & ALL SUBPLATES

Part Number	PSI Range	Price
RV-C10-2-15	50 - 1500	\$76.00
RV-C10-2-30	1500 - 3000	\$87.00

Part Number	PSI Range	Price
--	--	--
RV-T10A-15	50 - 1500	\$99.00
RV-T10A-30	100 - 3000	\$99.00

### D05, D05 HIGH FLOW & D08 MANIFOLDS

Part Number	PSI Range	Price
RV-C10-2-15	50 - 1500	\$76.00
RV-C10-2-30	1500 - 3000	\$87.00

Part Number	PSI Range	Price
RV-T3A-08	25 - 800	\$105.00
RV-T3A-15	50 - 1500	\$105.00
RV-T3A-30	100 - 3000	\$105.00

### OLD STYLE D03 & D03 SERIES MANIFOLDS

Part Number	PSI Range	Price
RV-C10-2R-02	50 - 200	\$76.00
RV-C10-2R-15	50 - 1500	\$109.00
RV-C10-2R-30	1500 - 3000	\$90.00



# Header Bar Manifolds\* with NPT & SAE Ports - 0 Degree

## 1/8" NPT End Ports w/ 1/16" NPT Side Ports

Aluminum / 0 Degree		Steel / 0 Degree	
HA-0002P/01P-02-1/Z	\$44.00	HS-0002P/01P-02-1/Z	\$121.00
HA-0002P/01P-03-1/Z	\$51.00	HS-0002P/01P-03-1/Z	\$153.00
HA-0002P/01P-04-1/Z	\$57.00	HS-0002P/01P-04-1/Z	\$168.00
HA-0002P/01P-05-1/Z	\$73.00	HS-0002P/01P-05-1/Z	\$174.00
HA-0002P/01P-06-1/Z	\$81.00	HS-0002P/01P-06-1/Z	\$180.00
HA-0002P/01P-07-1/Z	\$96.00	HS-0002P/01P-07-1/Z	\$205.00
HA-0002P/01P-08-1/Z	\$106.00	HS-0002P/01P-08-1/Z	\$218.00
HA-0002P/01P-09-1/Z	\$124.00	HS-0002P/01P-09-1/Z	\$254.00
HA-0002P/01P-10-1/Z	\$136.00	HS-0002P/01P-10-1/Z	\$276.00

## 1/4" NPT End Ports w/ 1/8" NPT Side Ports

Aluminum / 0 Degree		Steel / 0 Degree	
HA-0004P/02P-02-1/Z	\$45.00	HS-0004P/02P-02-1/Z	\$129.00
HA-0004P/02P-03-1/Z	\$46.00	HS-0004P/02P-03-1/Z	\$168.00
HA-0004P/02P-04-1/Z	\$58.00	HS-0004P/02P-04-1/Z	\$196.00
HA-0004P/02P-05-1/Z	\$86.00	HS-0004P/02P-05-1/Z	\$236.00
HA-0004P/02P-06-1/Z	\$78.00	HS-0004P/02P-06-1/Z	\$300.00
HA-0004P/02P-07-1/Z	\$96.00	HS-0004P/02P-07-1/Z	\$309.00
HA-0004P/02P-08-1/Z	\$106.00	HS-0004P/02P-08-1/Z	\$321.00
HA-0004P/02P-09-1/Z	\$121.00	HS-0004P/02P-09-1/Z	\$398.00
HA-0004P/02P-10-1/Z	\$148.00	HS-0004P/02P-10-1/Z	\$470.00

## 3/8" NPT (#6 SAE) End Ports w/ 1/8" NPT Side Ports

Aluminum / 0 Degree		Steel / 0 Degree	
HA-0006x/02P-02-1/Z	\$47	HS-0006x/02x-02-1/Z	\$150
HA-0006x/02P-03-1/Z	\$64	HS-0006x/02x-03-1/Z	\$209
HA-0006x/02P-04-1/Z	\$74	HS-0006x/02x-04-1/Z	\$272
HA-0006x/02P-05-1/Z	\$90	HS-0006x/02x-05-1/Z	\$344
HA-0006x/02P-06-1/Z	\$92	HS-0006x/02x-06-1/Z	\$436
HA-0006x/02P-07-1/Z	\$105	HS-0006x/02x-07-1/Z	\$471
HA-0006x/02P-08-1/Z	\$130	HS-0006x/02x-08-1/Z	\$517
HA-0006x/02P-09-1/Z	\$154	HS-0006x/02x-09-1/Z	\$590
HA-0006x/02P-10-1/Z	\$169	HS-0006x/02x-10-1/Z	\$658

## 1/8" NPT End Ports w/ 1/8" NPT Side Ports

Aluminum / 0 Degree		Steel / 0 Degree	
HA-0002P/02P-02-1/Z	\$48	HS-0002P/02P-02-1/Z	\$133
HA-0002P/02P-03-1/Z	\$56	HS-0002P/02P-03-1/Z	\$168
HA-0002P/02P-04-1/Z	\$63	HS-0002P/02P-04-1/Z	\$185
HA-0002P/02P-05-1/Z	\$80	HS-0002P/02P-05-1/Z	\$191
HA-0002P/02P-06-1/Z	\$89	HS-0002P/02P-06-1/Z	\$198
HA-0002P/02P-07-1/Z	\$106	HS-0002P/02P-07-1/Z	\$226
HA-0002P/02P-08-1/Z	\$117	HS-0002P/02P-08-1/Z	\$240
HA-0002P/02P-09-1/Z	\$136	HS-0002P/02P-09-1/Z	\$279
HA-0002P/02P-10-1/Z	\$150	HS-0002P/02P-10-1/Z	\$304

## 1/4" NPT (#4 SAE) End Ports w/ 1/4" NPT (#4 SAE) Side Ports

Aluminum / 0 Degree		Steel / 0 Degree	
HA-0004x/04x-02-1/Z	\$50	HS-0004x/04x-02-1/Z	\$142
HA-0004x/04x-03-1/Z	\$51	HS-0004x/04x-03-1/Z	\$185
HA-0004x/04x-04-1/Z	\$64	HS-0004x/04x-04-1/Z	\$216
HA-0004x/04x-05-1/Z	\$95	HS-0004x/04x-05-1/Z	\$260
HA-0004x/04x-06-1/Z	\$86	HS-0004x/04x-06-1/Z	\$330
HA-0004x/04x-07-1/Z	\$106	HS-0004x/04x-07-1/Z	\$340
HA-0004x/04x-08-1/Z	\$117	HS-0004x/04x-08-1/Z	\$353
HA-0004x/04x-09-1/Z	\$133	HS-0004x/04x-09-1/Z	\$438
HA-0004x/04x-10-1/Z	\$163	HS-0004x/04x-10-1/Z	\$517

## 3/8" NPT (#6 SAE) End Ports w/ 1/4" NPT (#4 SAE) Side Ports

Aluminum / 0 Degree		Steel / 0 Degree	
HA-0006x/04x-02-1/Z	\$43.00	HS-0006x/04x-02-1/Z	\$136.00
HA-0006x/04x-03-1/Z	\$58.00	HS-0006x/04x-03-1/Z	\$190.00
HA-0006x/04x-04-1/Z	\$67.00	HS-0006x/04x-04-1/Z	\$247.00
HA-0006x/04x-05-1/Z	\$82.00	HS-0006x/04x-05-1/Z	\$313.00
HA-0006x/04x-06-1/Z	\$84.00	HS-0006x/04x-06-1/Z	\$396.00
HA-0006x/04x-07-1/Z	\$95.00	HS-0006x/04x-07-1/Z	\$428.00
HA-0006x/04x-08-1/Z	\$118.00	HS-0006x/04x-08-1/Z	\$470.00
HA-0006x/04x-09-1/Z	\$140.00	HS-0006x/04x-09-1/Z	\$536.00
HA-0006x/04x-10-1/Z	\$154.00	HS-0006x/04x-10-1/Z	\$598.00

## 3/8" NPT (#6 SAE) End Ports w/ 3/8" NPT (#6 SAE) Side Ports

Aluminum / 0 Degree		Steel / 0 Degree	
HA-0006x/06x-02-1/Z	\$57	HS-0006x/06x-02-1/Z	\$167
HA-0006x/06x-03-1/Z	\$79	HS-0006x/06x-03-1/Z	\$231
HA-0006x/06x-04-1/Z	\$96	HS-0006x/06x-04-1/Z	\$293
HA-0006x/06x-05-1/Z	\$117	HS-0006x/06x-05-1/Z	\$388
HA-0006x/06x-06-1/Z	\$124	HS-0006x/06x-06-1/Z	\$449
HA-0006x/06x-07-1/Z	\$124	HS-0006x/06x-07-1/Z	\$495
HA-0006x/06x-08-1/Z	\$168	HS-0006x/06x-08-1/Z	\$544
HA-0006x/06x-09-1/Z	\$182	HS-0006x/06x-09-1/Z	\$624
HA-0006x/06x-10-1/Z	\$179	HS-0006x/06x-10-1/Z	\$707

\* Please Note: Header Bar Manifolds are Non-Returnable

Note: x - End & Side Port Thread Code  
 P - NPT Threads S - SAE Threads  
 BSPP, BSPT and Metric threads are also available,  
 consult factory for price.

"Standard" Port Sizes and combinations are shown. Header Manifolds with "Non-Standard" Port Sizes or combinations are available - Request Quote.

# Header Bar Manifolds\* with NPT & SAE Ports - 0 Degree



## 1/2" NPT (#8 SAE) End Ports w / 1/4" NPT (#4 SAE) Side Ports

Aluminum / 0 Degree		Steel / 0 Degree	
HA-0008x/04x-02-1/Z	\$56	HS-0008x/04x-02-1/Z	\$166
HA-0008x/04x-03-1/Z	\$78	HS-0008x/04x-03-1/Z	\$231
HA-0008x/04x-04-1/Z	\$96	HS-0008x/04x-04-1/Z	\$293
HA-0008x/04x-05-1/Z	\$117	HS-0008x/04x-05-1/Z	\$387
HA-0008x/04x-06-1/Z	\$123	HS-0008x/04x-06-1/Z	\$449
HA-0008x/04x-07-1/Z	\$123	HS-0008x/04x-07-1/Z	\$495
HA-0008x/04x-08-1/Z	\$167	HS-0008x/04x-08-1/Z	\$543
HA-0008x/04x-09-1/Z	\$182	HS-0008x/04x-09-1/Z	\$624
HA-0008x/04x-10-1/Z	\$178	HS-0008x/04x-10-1/Z	\$706

## 1/2" NPT (#8 SAE) End Ports w / 1/2" NPT (#8 SAE) Side Ports

Aluminum / 0 Degree		Steel / 0 Degree	
HA-0008x/08x-02-1/Z	\$63	HS-0008x/08x-02-1/Z	\$184
HA-0008x/08x-03-1/Z	\$87	HS-0008x/08x-03-1/Z	\$255
HA-0008x/08x-04-1/Z	\$106	HS-0008x/08x-04-1/Z	\$323
HA-0008x/08x-05-1/Z	\$129	HS-0008x/08x-05-1/Z	\$427
HA-0008x/08x-06-1/Z	\$137	HS-0008x/08x-06-1/Z	\$494
HA-0008x/08x-07-1/Z	\$137	HS-0008x/08x-07-1/Z	\$545
HA-0008x/08x-08-1/Z	\$185	HS-0008x/08x-08-1/Z	\$599
HA-0008x/08x-09-1/Z	\$201	HS-0008x/08x-09-1/Z	\$687
HA-0008x/08x-10-1/Z	\$197	HS-0008x/08x-10-1/Z	\$778

## 3/4" NPT (#12 SAE) End Ports w / 1/2" NPT (#8 SAE) Side Ports

Aluminum / 0 Degree		Steel / 0 Degree	
HA-0012x/08x-02-1/Z	\$96.00	HS-0012x/08x-02-1/Z	\$195.00
HA-0012x/08x-03-1/Z	\$137.00	HS-0012x/08x-03-1/Z	\$270.00
HA-0012x/08x-04-1/Z	\$179.00	HS-0012x/08x-04-1/Z	\$372.00
HA-0012x/08x-05-1/Z	\$213.00	HS-0012x/08x-05-1/Z	\$477.00
HA-0012x/08x-06-1/Z	\$245.00	HS-0012x/08x-06-1/Z	\$541.00
HA-0012x/08x-07-1/Z	\$224.00	HS-0012x/08x-07-1/Z	\$596.00
HA-0012x/08x-08-1/Z	\$268.00	HS-0012x/08x-08-1/Z	\$662.00
HA-0012x/08x-09-1/Z	\$271.00	HS-0012x/08x-09-1/Z	\$847.00

## 1" NPT (#16 SAE) End Ports w / 1/2" NPT (#8 SAE) Side Ports

Aluminum / 0 Degree		Steel / 0 Degree	
HA-0016x/08x-02-1/Z	\$115	HS-0016x/08x-02-1/Z	\$288
HA-0016x/08x-03-1/Z	\$162	HS-0016x/08x-03-1/Z	\$421
HA-0016x/08x-04-1/Z	\$237	HS-0016x/08x-04-1/Z	\$563
HA-0016x/08x-05-1/Z	\$250	HS-0016x/08x-05-1/Z	\$647
HA-0016x/08x-06-1/Z	\$296	HS-0016x/08x-06-1/Z	\$732
HA-0016x/08x-07-1/Z	\$376	HS-0016x/08x-07-1/Z	\$843

## 1/2" NPT (#8 SAE) End Ports w / 3/8" NPT (#6 SAE) Side Ports

Aluminum / 0 Degree		Steel / 0 Degree	
HA-0008x/06x-02-1/Z	\$51.00	HS-0008x/06x-02-1/Z	\$151.00
HA-0008x/06x-03-1/Z	\$71.00	HS-0008x/06x-03-1/Z	\$210.00
HA-0008x/06x-04-1/Z	\$87.00	HS-0008x/06x-04-1/Z	\$266.00
HA-0008x/06x-05-1/Z	\$106.00	HS-0008x/06x-05-1/Z	\$352.00
HA-0008x/06x-06-1/Z	\$112.00	HS-0008x/06x-06-1/Z	\$408.00
HA-0008x/06x-07-1/Z	\$112.00	HS-0008x/06x-07-1/Z	\$450.00
HA-0008x/06x-08-1/Z	\$152.00	HS-0008x/06x-08-1/Z	\$494.00
HA-0008x/06x-09-1/Z	\$165.00	HS-0008x/06x-09-1/Z	\$567.00
HA-0008x/06x-10-1/Z	\$162.00	HS-0008x/06x-10-1/Z	\$642.00

## 3/4" NPT (#12 SAE) End Ports w / 3/8" NPT (#6 SAE) Side Ports

Aluminum / 0 Degree		Steel / 0 Degree	
HA-0012x/06x-02-1/Z	\$106	HS-0012x/06x-02-1/Z	\$215
HA-0012x/06x-03-1/Z	\$151	HS-0012x/06x-03-1/Z	\$297
HA-0012x/06x-04-1/Z	\$197	HS-0012x/06x-04-1/Z	\$410
HA-0012x/06x-05-1/Z	\$235	HS-0012x/06x-05-1/Z	\$525
HA-0012x/06x-06-1/Z	\$270	HS-0012x/06x-06-1/Z	\$596
HA-0012x/06x-07-1/Z	\$247	HS-0012x/06x-07-1/Z	\$656
HA-0012x/06x-08-1/Z	\$295	HS-0012x/06x-08-1/Z	\$729
HA-0012x/06x-09-1/Z	\$299	HS-0012x/06x-09-1/Z	\$932

## 3/4" NPT (#12 SAE) End Ports w / 3/4" NPT (#12 SAE) Side Ports

Aluminum / 0 Degree		Steel / 0 Degree	
HA-0012x/12x-02-1/Z	\$106	HS-0012x/12x-02-1/Z	\$287
HA-0012x/12x-03-1/Z	\$151	HS-0012x/12x-03-1/Z	\$420
HA-0012x/12x-04-1/Z	\$197	HS-0012x/12x-04-1/Z	\$562
HA-0012x/12x-05-1/Z	\$234	HS-0012x/12x-05-1/Z	\$647
HA-0012x/12x-06-1/Z	\$270	HS-0012x/12x-06-1/Z	\$732
HA-0012x/12x-07-1/Z	\$246	HS-0012x/12x-07-1/Z	\$843

## 1" NPT (#16 SAE) End Ports w / 3/4" NPT (#12 SAE) Side Ports

Aluminum / 0 Degree		Steel / 0 Degree	
HA-0016x/12x-02-1/Z	\$104.00	HS-0016x/12x-02-1/Z	\$261.00
HA-0016x/12x-03-1/Z	\$147.00	HS-0016x/12x-03-1/Z	\$382.00
HA-0016x/12x-04-1/Z	\$215.00	HS-0016x/12x-04-1/Z	\$511.00
HA-0016x/12x-05-1/Z	\$227.00	HS-0016x/12x-05-1/Z	\$588.00
HA-0016x/12x-06-1/Z	\$269.00	HS-0016x/12x-06-1/Z	\$665.00
HA-0016x/12x-07-1/Z	\$341.00	HS-0016x/12x-07-1/Z	\$766.00

\* Please Note: Header Bar Manifolds are Non-Returnable

Note: x - End & Side Port Thread Code  
 P - NPT Threads    S - SAE Threads  
 BSPP, BSPT and Metric threads are also available,  
 consult factory for price.

"Standard" Port Sizes and combinations are shown. Header Manifolds with "Non-Standard" Port Sizes or combinations are available - Request Quote.



# Header Bar Manifolds\* with NPT & SAE Ports - 0 Degree

## 1" NPT (#16 SAE) End Ports w / 1" NPT (#16 SAE) Side Ports

Aluminum / 0 Degree		Steel / 0 Degree	
HA-0016x/16x-02-1/Z	\$114	HS-0016x/16x-02-1/Z	\$287
HA-0016x/16x-03-1/Z	\$162	HS-0016x/16x-03-1/Z	\$420
HA-0016x/16x-04-1/Z	\$237	HS-0016x/16x-04-1/Z	\$562
HA-0016x/16x-05-1/Z	\$250	HS-0016x/16x-05-1/Z	\$647
HA-0016x/16x-06-1/Z	\$296	HS-0016x/16x-06-1/Z	\$732
HA-0016x/16x-07-1/Z	\$375	HS-0016x/16x-07-1/Z	\$843

## 1 1/4" NPT (#20 SAE) End Ports w / 1" NPT (#16 SAE) Side Ports

Aluminum / 0 Degree		Steel / 0 Degree	
HA-0020x/16x-02-1/Z	\$139.00	HS-0020x/16x-02-1/Z	\$274.00
HA-0020x/16x-03-1/Z	\$186.00	HS-0020x/16x-03-1/Z	\$478.00
HA-0020x/16x-04-1/Z	\$240.00	HS-0020x/16x-04-1/Z	\$583.00
HA-0020x/16x-05-1/Z	\$310.00	HS-0020x/16x-05-1/Z	\$627.00
HA-0020x/16x-06-1/Z	\$347.00	HS-0020x/16x-06-1/Z	\$720.00

## 1 1/2" NPT (#24 SAE) End Ports w / 1" NPT (#16 SAE) Side Ports

Aluminum / 0 Degree		Steel / 0 Degree	
HA-0024x/16x-02-1/Z	\$235	HS-0024x/16x-02-1/Z	\$437
HA-0024x/16x-03-1/Z	\$327	HS-0024x/16x-03-1/Z	\$568
HA-0024x/16x-04-1/Z	\$361	HS-0024x/16x-04-1/Z	\$752
HA-0024x/16x-05-1/Z	\$441	HS-0024x/16x-05-1/Z	\$922
HA-0024x/16x-06-1/Z	\$485	HS-0024x/16x-06-1/Z	\$1,014

## 1 1/2" NPT (#24 SAE) End Ports w / 1 1/2" NPT (#24 SAE) Side Ports

Aluminum / 0 Degree		Steel / 0 Degree	
HA-0024x/24x-02-1/Z	\$236	HS-0024x/24x-02-1/Z	\$437
HA-0024x/24x-03-1/Z	\$327	HS-0024x/24x-03-1/Z	\$568
HA-0024x/24x-04-1/Z	\$361	HS-0024x/24x-04-1/Z	\$753

## #32 SAE End Ports w / 1 1/2" NPT (#24 SAE) Side Ports

Aluminum / 0 Degree		Steel / 0 Degree	
HA-0032S/24x-02-1/Z	\$246	HS-0032S/24x-02-1/Z	\$598
HA-0032S/24x-03-1/Z	\$353	HS-0032S/24x-03-1/Z	\$782
HA-0032S/24x-04-1/Z	\$451	HS-0032S/24x-04-1/Z	\$1,038

## 1 1/4" NPT (#20 SAE) End Ports w / 3/4" NPT (#12 SAE) Side Ports

Aluminum / 0 Degree		Steel / 0 Degree	
HA-0020x/12x-02-1/Z	\$153	HS-0020x/12x-02-1/Z	\$301
HA-0020x/12x-03-1/Z	\$205	HS-0020x/12x-03-1/Z	\$526
HA-0020x/12x-04-1/Z	\$264	HS-0020x/12x-04-1/Z	\$641
HA-0020x/12x-05-1/Z	\$341	HS-0020x/12x-05-1/Z	\$690
HA-0020x/12x-06-1/Z	\$382	HS-0020x/12x-06-1/Z	\$690
HA-0020x/12x-07-1/Z	\$420	HS-0020x/12x-07-1/Z	\$759

## 1 1/4" NPT (#20 SAE) End Ports w / 1 1/4" NPT (#20 SAE) Side Ports

Aluminum / 0 Degree		Steel / 0 Degree	
HA-0020x/20x-02-1/Z	\$153	HS-0020x/20x-02-1/Z	\$302
HA-0020x/20x-03-1/Z	\$205	HS-0020x/20x-03-1/Z	\$526
HA-0020x/20x-04-1/Z	\$264	HS-0020x/20x-04-1/Z	\$642
HA-0020x/20x-05-1/Z	\$341	HS-0020x/20x-05-1/Z	\$690

## 1 1/2" NPT (#24 SAE) End Ports w / 1 1/4" NPT (#20 SAE) Side Ports

Aluminum / 0 Degree		Steel / 0 Degree	
HA-0024x/20x-02-1/Z	\$214.00	HS-0024x/20x-02-1/Z	\$397.00
HA-0024x/20x-03-1/Z	\$297.00	HS-0024x/20x-03-1/Z	\$516.00
HA-0024x/20x-04-1/Z	\$328.00	HS-0024x/20x-04-1/Z	\$684.00
HA-0024x/20x-05-1/Z	\$401.00	HS-0024x/20x-05-1/Z	\$838.00

## 2" NPT End Ports w / 1 1/2" NPT (#24 SAE) Side Ports

Aluminum / 0 Degree		Steel / 0 Degree	
HA-0032P/24x-02-1/Z	\$246	HS-0032P/24x-02-1/Z	\$598
HA-0032P/24x-03-1/Z	\$353	HS-0032P/24x-03-1/Z	\$782
HA-0032P/24x-04-1/Z	\$451	HS-0032P/24x-04-1/Z	\$1,038

\* Please Note: Header Bar Manifolds are Non-Returnable

Note: x - End & Side Port Thread Code

P - NPT Threads S - SAE Threads

BSPP, BSPT and Metric threads are also available, consult factory for price.

"Standard" Port Sizes and combinations are shown. Header Manifolds with "Non-Standard" Port Sizes or combinations are available - Request Quote.

# Header Bar Manifolds\* with NPT & SAE Ports - 90 Degree



## 1/8" NPT End Ports w/ 1/16" NPT Side Ports

Aluminum / 90 Degree		Steel / 90 Degree	
HA-0902P/01P-02-1/Z	\$69	HS-0902P/01P-02-1/Z	\$179
HA-0902P/01P-03-1/Z	\$75	HS-0902P/01P-03-1/Z	\$128
HA-0902P/01P-04-1/Z	\$92	HS-0902P/01P-04-1/Z	\$140
HA-0902P/01P-05-1/Z	\$107	HS-0902P/01P-05-1/Z	\$145
HA-0902P/01P-06-1/Z	\$123	HS-0902P/01P-06-1/Z	\$150
HA-0902P/01P-07-1/Z	\$163	HS-0902P/01P-07-1/Z	\$171
HA-0902P/01P-08-1/Z	\$196	HS-0902P/01P-08-1/Z	\$182
HA-0902P/01P-09-1/Z	\$213	HS-0902P/01P-09-1/Z	\$212
HA-0902P/01P-10-1/Z	\$257	HS-0902P/01P-10-1/Z	\$230

## 1/8" NPT End Ports w/ 1/8" NPT Side Ports

Aluminum / 90 Degree		Steel / 90 Degree	
HA-0902P/02P-02-1/Z	\$69	HS-0902P/02P-02-1/Z	\$179
HA-0902P/02P-03-1/Z	\$75	HS-0902P/02P-03-1/Z	\$260
HA-0902P/02P-04-1/Z	\$92	HS-0902P/02P-04-1/Z	\$338
HA-0902P/02P-05-1/Z	\$107	HS-0902P/02P-05-1/Z	\$377
HA-0902P/02P-06-1/Z	\$123	HS-0902P/02P-06-1/Z	\$424
HA-0902P/02P-07-1/Z	\$163	HS-0902P/02P-07-1/Z	\$471
HA-0902P/02P-08-1/Z	\$196	HS-0902P/02P-08-1/Z	\$517
HA-0902P/02P-09-1/Z	\$213	HS-0902P/02P-09-1/Z	\$590
HA-0902P/02P-10-1/Z	\$257	HS-0902P/02P-10-1/Z	\$658

## 1/4" NPT End Ports w/ 1/8" NPT Side Ports

Aluminum / 90 Degree		Steel / 90 Degree	
HA-0904P/02P-02-1/Z	\$76	HS-0904P/02P-02-1/Z	\$197
HA-0904P/02P-03-1/Z	\$82	HS-0904P/02P-03-1/Z	\$141
HA-0904P/02P-04-1/Z	\$102	HS-0904P/02P-04-1/Z	\$154
HA-0904P/02P-05-1/Z	\$117	HS-0904P/02P-05-1/Z	\$160
HA-0904P/02P-06-1/Z	\$136	HS-0904P/02P-06-1/Z	\$165
HA-0904P/02P-07-1/Z	\$179	HS-0904P/02P-07-1/Z	\$188
HA-0904P/02P-08-1/Z	\$215	HS-0904P/02P-08-1/Z	\$200
HA-0904P/02P-09-1/Z	\$235	HS-0904P/02P-09-1/Z	\$233
HA-0904P/02P-10-1/Z	\$283	HS-0904P/02P-10-1/Z	\$253

## 1/4" NPT (#4 SAE) End Ports w/ 1/4" NPT (#4 SAE) Side Ports

Aluminum / 90 Degree		Steel / 90 Degree	
HA-0904x/04x-02-1/Z	\$84	HS-0904x/04x-02-1/Z	\$185
HA-0904x/04x-03-1/Z	\$97	HS-0904x/04x-03-1/Z	\$284
HA-0904x/04x-04-1/Z	\$119	HS-0904x/04x-04-1/Z	\$377
HA-0904x/04x-05-1/Z	\$139	HS-0904x/04x-05-1/Z	\$410
HA-0904x/04x-06-1/Z	\$160	HS-0904x/04x-06-1/Z	\$449
HA-0904x/04x-07-1/Z	\$179	HS-0904x/04x-07-1/Z	\$495
HA-0904x/04x-08-1/Z	\$207	HS-0904x/04x-08-1/Z	\$543
HA-0904x/04x-09-1/Z	\$221	HS-0904x/04x-09-1/Z	\$624
HA-0904x/04x-10-1/Z	\$292	HS-0904x/04x-10-1/Z	\$706

## 3/8" NPT (#6 SAE) End Ports w/ 1/8" NPT Side Ports

Aluminum / 90 Degree		Steel / 90 Degree	
HA-0906x/02P-02-1/Z	\$69	HS-0906x/02x-02-1/Z	\$179
HA-0906x/02P-03-1/Z	\$75	HS-0906x/02x-03-1/Z	\$260
HA-0906x/02P-04-1/Z	\$92	HS-0906x/02x-04-1/Z	\$338
HA-0906x/02P-05-1/Z	\$107	HS-0906x/02x-05-1/Z	\$377
HA-0906x/02P-06-1/Z	\$123	HS-0906x/02x-06-1/Z	\$424
HA-0906x/02P-07-1/Z	\$163	HS-0906x/02x-07-1/Z	\$471
HA-0906x/02P-08-1/Z	\$196	HS-0906x/02x-08-1/Z	\$517
HA-0906x/02P-09-1/Z	\$213	HS-0906x/02x-09-1/Z	\$590
HA-0906x/02P-10-1/Z	\$257	HS-0906x/02x-10-1/Z	\$658

## 3/8" NPT (#6 SAE) End Ports w/ 1/4" NPT (#4 SAE) Side Ports

Aluminum / 90 Degree		Steel / 90 Degree	
HA-0906x/04x-02-1/Z	\$63.00	HS-0906x/04x-02-1/Z	\$163.00
HA-0906x/04x-03-1/Z	\$68.00	HS-0906x/04x-03-1/Z	\$236.00
HA-0906x/04x-04-1/Z	\$84.00	HS-0906x/04x-04-1/Z	\$307.00
HA-0906x/04x-05-1/Z	\$97.00	HS-0906x/04x-05-1/Z	\$343.00
HA-0906x/04x-06-1/Z	\$112.00	HS-0906x/04x-06-1/Z	\$385.00
HA-0906x/04x-07-1/Z	\$148.00	HS-0906x/04x-07-1/Z	\$428.00
HA-0906x/04x-08-1/Z	\$178.00	HS-0906x/04x-08-1/Z	\$470.00
HA-0906x/04x-09-1/Z	\$194.00	HS-0906x/04x-09-1/Z	\$536.00
HA-0906x/04x-10-1/Z	\$234.00	HS-0906x/04x-10-1/Z	\$598.00

\* Please Note: Header Bar Manifolds are Non-Returnable

Note: x - End & Side Port Thread Code

P - NPT Threads

S - SAE Threads

BSPP, BSPT and Metric threads are also available, consult factory for price.

"Standard" Port Sizes and combinations are shown. Header Manifolds with "Non-Standard" Port Sizes or combinations are available - Request Quote.



# Header Bar Manifolds\* with NPT & SAE Ports - 90 Degree

## 3/8" NPT (#6 SAE) End Ports w / 3/8" NPT (#6 SAE) Side Ports

Aluminum / 90 Degree		Steel / 90 Degree	
HA-0906x/06x-02-1/Z	\$84	HS-0906x/06x-02-1/Z	\$185
HA-0906x/06x-03-1/Z	\$97	HS-0906x/06x-03-1/Z	\$284
HA-0906x/06x-04-1/Z	\$119	HS-0906x/06x-04-1/Z	\$377
HA-0906x/06x-05-1/Z	\$139	HS-0906x/06x-05-1/Z	\$410
HA-0906x/06x-06-1/Z	\$160	HS-0906x/06x-06-1/Z	\$449
HA-0906x/06x-07-1/Z	\$179	HS-0906x/06x-07-1/Z	\$495
HA-0906x/06x-08-1/Z	\$207	HS-0906x/06x-08-1/Z	\$543
HA-0906x/06x-09-1/Z	\$221	HS-0906x/06x-09-1/Z	\$624
HA-0906x/06x-10-1/Z	\$292	HS-0906x/06x-10-1/Z	\$706

## 1/2" NPT (#8 SAE) End Ports w / 1/4" NPT (#4 SAE) Side Ports

Aluminum / 90 Degree		Steel / 90 Degree	
HA-0908x/04x-02-1/Z	\$84	HS-0908x/04x-02-1/Z	\$185
HA-0908x/04x-03-1/Z	\$97	HS-0908x/04x-03-1/Z	\$284
HA-0908x/04x-04-1/Z	\$119	HS-0908x/04x-04-1/Z	\$377
HA-0908x/04x-05-1/Z	\$139	HS-0908x/04x-05-1/Z	\$410
HA-0908x/04x-06-1/Z	\$160	HS-0908x/04x-06-1/Z	\$449
HA-0908x/04x-07-1/Z	\$179	HS-0908x/04x-07-1/Z	\$495
HA-0908x/04x-08-1/Z	\$207	HS-0908x/04x-08-1/Z	\$543
HA-0908x/04x-09-1/Z	\$221	HS-0908x/04x-09-1/Z	\$624
HA-0908x/04x-10-1/Z	\$292	HS-0908x/04x-10-1/Z	\$706

## 1/2" NPT (#8 SAE) End Ports w / 3/8" NPT (#6 SAE) Side Ports

Aluminum / 90 Degree		Steel / 90 Degree	
HA-0908x/06x-02-1/Z	\$76.00	HS-0908x/06x-02-1/Z	\$168.00
HA-0908x/06x-03-1/Z	\$88.00	HS-0908x/06x-03-1/Z	\$258.00
HA-0908x/06x-04-1/Z	\$108.00	HS-0908x/06x-04-1/Z	\$343.00
HA-0908x/06x-05-1/Z	\$126.00	HS-0908x/06x-05-1/Z	\$373.00
HA-0908x/06x-06-1/Z	\$145.00	HS-0908x/06x-06-1/Z	\$408.00
HA-0908x/06x-07-1/Z	\$163.00	HS-0908x/06x-07-1/Z	\$450.00
HA-0908x/06x-08-1/Z	\$188.00	HS-0908x/06x-08-1/Z	\$494.00
HA-0908x/06x-09-1/Z	\$201.00	HS-0908x/06x-09-1/Z	\$567.00
HA-0908x/06x-10-1/Z	\$265.00	HS-0908x/06x-10-1/Z	\$642.00

## 1/2" NPT (#8 SAE) End Ports w / 1/2" NPT (#8 SAE) Side Ports

Aluminum / 90 Degree		Steel / 90 Degree	
HA-0908x/08x-02-1/Z	\$84	HS-0908x/08x-02-1/Z	\$185
HA-0908x/08x-03-1/Z	\$97	HS-0908x/08x-03-1/Z	\$284
HA-0908x/08x-04-1/Z	\$119	HS-0908x/08x-04-1/Z	\$377
HA-0908x/08x-05-1/Z	\$139	HS-0908x/08x-05-1/Z	\$410
HA-0908x/08x-06-1/Z	\$160	HS-0908x/08x-06-1/Z	\$449
HA-0908x/08x-07-1/Z	\$179	HS-0908x/08x-07-1/Z	\$495
HA-0908x/08x-08-1/Z	\$207	HS-0908x/08x-08-1/Z	\$543
HA-0908x/08x-09-1/Z	\$221	HS-0908x/08x-09-1/Z	\$624
HA-0908x/08x-10-1/Z	\$292	HS-0908x/08x-10-1/Z	\$706

## 3/4" NPT (#12 SAE) End Ports w / 3/8" NPT (#6 SAE) Side Ports

Aluminum / 90 Degree		Steel / 90 Degree	
HA-0912x/06x-02-1/Z	\$108	HS-0912x/06x-02-1/Z	\$241
HA-0912x/06x-03-1/Z	\$167	HS-0912x/06x-03-1/Z	\$345
HA-0912x/06x-04-1/Z	\$231	HS-0912x/06x-04-1/Z	\$476
HA-0912x/06x-05-1/Z	\$256	HS-0912x/06x-05-1/Z	\$574
HA-0912x/06x-06-1/Z	\$293	HS-0912x/06x-06-1/Z	\$642
HA-0912x/06x-07-1/Z	\$332	HS-0912x/06x-07-1/Z	\$756
HA-0912x/06x-08-1/Z	\$370	HS-0912x/06x-08-1/Z	\$868
HA-0912x/06x-09-1/Z	\$463	HS-0912x/06x-09-1/Z	\$957

## 3/4" NPT (#12 SAE) End Ports w / 1/2" NPT (#8 SAE) Side Ports

Aluminum / 90 Degree		Steel / 90 Degree	
HA-0912x/08x-02-1/Z	\$98.00	HS-0912x/08x-02-1/Z	\$219.00
HA-0912x/08x-03-1/Z	\$152.00	HS-0912x/08x-03-1/Z	\$314.00
HA-0912x/08x-04-1/Z	\$210.00	HS-0912x/08x-04-1/Z	\$433.00
HA-0912x/08x-05-1/Z	\$233.00	HS-0912x/08x-05-1/Z	\$522.00
HA-0912x/08x-06-1/Z	\$266.00	HS-0912x/08x-06-1/Z	\$584.00
HA-0912x/08x-07-1/Z	\$302.00	HS-0912x/08x-07-1/Z	\$687.00
HA-0912x/08x-08-1/Z	\$336.00	HS-0912x/08x-08-1/Z	\$789.00
HA-0912x/08x-09-1/Z	\$421.00	HS-0912x/08x-09-1/Z	\$870.00

\* Please Note: Header Bar Manifolds are Non-Returnable

Note: x - End & Side Port Thread Code

P - NPT Threads

S - SAE Threads

BSPP, BSPT and Metric threads are also available, consult factory for price.

"Standard" Port Sizes and combinations are shown. Header Manifolds with "Non-Standard" Port Sizes or combinations are available - Request Quote.

# Header Bar Manifolds\* with NPT & SAE Ports - 90 Degree



## 3/4" NPT (#12 SAE) End Ports w / 3/4" NPT (#12 SAE) Side Ports

Aluminum / 90 Degree		Steel / 90 Degree	
HA-0912x/12x-02-1/Z	\$108	HS-0912x/12x-02-1/Z	\$241
HA-0912x/12x-03-1/Z	\$167	HS-0912x/12x-03-1/Z	\$345
HA-0912x/12x-04-1/Z	\$231	HS-0912x/12x-04-1/Z	\$476
HA-0912x/12x-05-1/Z	\$256	HS-0912x/12x-05-1/Z	\$574
HA-0912x/12x-06-1/Z	\$293	HS-0912x/12x-06-1/Z	\$642
HA-0912x/12x-07-1/Z	\$332	HS-0912x/12x-07-1/Z	\$756

## 1" NPT (#16 SAE) End Ports w / 1/2" NPT (#8 SAE) Side Ports

Aluminum / 90 Degree		Steel / 90 Degree	
HA-0916x/08x-02-1/Z	\$128	HS-0916x/08x-02-1/Z	\$295
HA-0916x/08x-03-1/Z	\$207	HS-0916x/08x-03-1/Z	\$447
HA-0916x/08x-04-1/Z	\$275	HS-0916x/08x-04-1/Z	\$648
HA-0916x/08x-05-1/Z	\$295	HS-0916x/08x-05-1/Z	\$781
HA-0916x/08x-06-1/Z	\$342	HS-0916x/08x-06-1/Z	\$889
HA-0916x/08x-07-1/Z	\$446	HS-0916x/08x-07-1/Z	\$1,004

## 1" NPT (#16 SAE) End Ports w / 3/4" NPT (#12 SAE) Side Ports

Aluminum / 90 Degree		Steel / 90 Degree	
HA-0916x/12x-02-1/Z	\$116.00	HS-0916x/12x-02-1/Z	\$268.00
HA-0916x/12x-03-1/Z	\$188.00	HS-0916x/12x-03-1/Z	\$406.00
HA-0916x/12x-04-1/Z	\$250.00	HS-0916x/12x-04-1/Z	\$589.00
HA-0916x/12x-05-1/Z	\$268.00	HS-0916x/12x-05-1/Z	\$710.00
HA-0916x/12x-06-1/Z	\$311.00	HS-0916x/12x-06-1/Z	\$808.00
HA-0916x/12x-07-1/Z	\$405.00	HS-0916x/12x-07-1/Z	\$913.00

## 1" NPT (#16 SAE) End Ports w / 1" NPT (#16 SAE) Side Ports

Aluminum / 90 Degree		Steel / 90 Degree	
HA-0916x/16x-02-1/Z	\$128	HS-0916x/16x-02-1/Z	\$295
HA-0916x/16x-03-1/Z	\$207	HS-0916x/16x-03-1/Z	\$447
HA-0916x/16x-04-1/Z	\$275	HS-0916x/16x-04-1/Z	\$648
HA-0916x/16x-05-1/Z	\$295	HS-0916x/16x-05-1/Z	\$781
HA-0916x/16x-06-1/Z	\$342	HS-0916x/16x-06-1/Z	\$889
HA-0916x/16x-07-1/Z	\$446	HS-0916x/16x-07-1/Z	\$1,004

## 1 1/4" NPT (#20 SAE) End Ports w / 3/4" NPT (#12 SAE) Side Ports

Aluminum / 90 Degree		Steel / 90 Degree	
HA-0920x/12x-02-1/Z	\$185	HS-0920x/12x-02-1/Z	\$363
HA-0920x/12x-03-1/Z	\$261	HS-0920x/12x-03-1/Z	\$498
HA-0920x/12x-04-1/Z	\$334	HS-0920x/12x-04-1/Z	\$656
HA-0920x/12x-05-1/Z	\$408	HS-0920x/12x-05-1/Z	\$803
HA-0920x/12x-06-1/Z	\$482	HS-0920x/12x-06-1/Z	\$952
HA-0920x/12x-07-1/Z	\$530	HS-0920x/12x-07-1/Z	\$1,047

## 1 1/4" NPT (#20 SAE) End Ports w / 1" NPT (#16 SAE) Side Ports

Aluminum / 90 Degree		Steel / 90 Degree	
HA-0920x/16x-02-1/Z	\$168.00	HS-0920x/16x-02-1/Z	\$330.00
HA-0920x/16x-03-1/Z	\$237.00	HS-0920x/16x-03-1/Z	\$453.00
HA-0920x/16x-04-1/Z	\$304.00	HS-0920x/16x-04-1/Z	\$596.00
HA-0920x/16x-05-1/Z	\$371.00	HS-0920x/16x-05-1/Z	\$730.00
HA-0920x/16x-06-1/Z	\$438.00	HS-0920x/16x-06-1/Z	\$865.00

## 1 1/4" NPT (#20 SAE) End Ports w / 1 1/4" NPT (#20 SAE) Side Ports

Aluminum / 90 Degree		Steel / 90 Degree	
HA-0920x/20x-02-1/Z	\$185	HS-0920x/20x-02-1/Z	\$363
HA-0920x/20x-03-1/Z	\$261	HS-0920x/20x-03-1/Z	\$498
HA-0920x/20x-04-1/Z	\$334	HS-0920x/20x-04-1/Z	\$656
HA-0920x/20x-05-1/Z	\$408	HS-0920x/20x-05-1/Z	\$803

## 1 1/2" NPT (#24 SAE) End Ports w / 1" NPT (#16 SAE) Side Ports

Aluminum / 90 Degree		Steel / 90 Degree	
HA-0924x/16x-02-1/Z	\$221	HS-0924x/16x-02-1/Z	\$475
HA-0924x/16x-03-1/Z	\$402	HS-0924x/16x-03-1/Z	\$660
HA-0924x/16x-04-1/Z	\$398	HS-0924x/16x-04-1/Z	\$853
HA-0924x/16x-05-1/Z	\$529	HS-0924x/16x-05-1/Z	\$1,047
HA-0924x/16x-06-1/Z	\$582	HS-0924x/16x-06-1/Z	\$1,152

\* Please Note: Header Bar Manifolds are Non-Returnable

Note: x - End & Side Port Thread Code

P - NPT Threads

S - SAE Threads

BSPP, BSPT and Metric threads are also available, consult factory for price.

"Standard" Port Sizes and combinations are shown. Header Manifolds with "Non-Standard" Port Sizes or combinations are available - Request Quote.



# Header Bar Manifolds\* with NPT & SAE Ports - 90 Degree

## 1 1/2" NPT (#24 SAE) End Ports w / 1 1/4" NPT (#20 SAE) Side Ports

Aluminum / 90 Degree	
HA-0924x/20x-02-1/Z	\$201.00
HA-0924x/20x-03-1/Z	\$365.00
HA-0924x/20x-04-1/Z	\$362.00
HA-0924x/20x-05-1/Z	\$481.00

Steel / 90 Degree	
HS-0924x/20x-02-1/Z	\$432.00
HS-0924x/20x-03-1/Z	\$600.00
HS-0924x/20x-04-1/Z	\$775.00
HS-0924x/20x-05-1/Z	\$952.00

## 1 1/2" NPT (#24 SAE) End Ports w / 1 1/2" NPT (#24 SAE) Side Ports

Aluminum / 90 Degree	
HA-0924x/24x-02-1/Z	\$221
HA-0924x/24x-03-1/Z	\$402
HA-0924x/24x-04-1/Z	\$398

Steel / 90 Degree	
HS-0924x/24x-02-1/Z	\$475
HS-0924x/24x-03-1/Z	\$660
HS-0924x/24x-04-1/Z	\$853

## 2" NPT End Ports w / 1 1/2" NPT (#24 SAE) Side Ports

Aluminum / 90 Degree	
HA-0932P/24x-02-1/Z	\$283
HA-0932P/24x-03-1/Z	\$433
HA-0932P/24x-04-1/Z	\$592

Steel / 90 Degree	
HS-0932P/24x-02-1/Z	\$606
HS-0932P/24x-03-1/Z	\$870
HS-0932P/24x-04-1/Z	\$1,141

## #32 SAE End Ports w / 1 1/2" NPT (#24 SAE) Side Ports

Aluminum / 90 Degree	
HA-0932S/24x-02-1/Z	\$283
HA-0932S/24x-03-1/Z	\$433
HA-0932S/24x-04-1/Z	\$592

Steel / 90 Degree	
HS-0932S/24x-02-1/Z	\$606
HS-0932S/24x-03-1/Z	\$870
HS-0932S/24x-04-1/Z	\$1,141

\* Please Note: Header Bar Manifolds are Non-Returnable

Note: x - End & Side Port Thread Code

P - NPT Threads

S - SAE Threads

BSPP, BSPT and Metric threads are also available,  
consult factory for price.

"Standard" Port Sizes and combinations are shown. Header Manifolds with "Non-Standard" Port Sizes or combinations are available - Request Quote.

# Header Bar Manifolds\* with NPT & SAE Ports - 180 Degree



## 1/8" NPT End Ports w/ 1/16" NPT Side Ports

Aluminum / 180 Degree		Steel / 180 Degree	
HA-1802P/01P-02-1/Z	\$66	HS-1802P/01P-02-1/Z	\$108
HA-1802P/01P-03-1/Z	\$78	HS-1802P/01P-03-1/Z	\$162
HA-1802P/01P-04-1/Z	\$92	HS-1802P/01P-04-1/Z	\$265
HA-1802P/01P-05-1/Z	\$119	HS-1802P/01P-05-1/Z	\$284
HA-1802P/01P-06-1/Z	\$132	HS-1802P/01P-06-1/Z	\$317
HA-1802P/01P-07-1/Z	\$164	HS-1802P/01P-07-1/Z	\$387
HA-1802P/01P-08-1/Z	\$167	HS-1802P/01P-08-1/Z	\$464
HA-1802P/01P-09-1/Z	\$205	HS-1802P/01P-09-1/Z	\$516
HA-1802P/01P-10-1/Z	\$257	HS-1802P/01P-10-1/Z	\$576

## 1/8" NPT End Ports w/ 1/8" NPT Side Ports

Aluminum / 180 Degree		Steel / 180 Degree	
HA-1802P/02P-02-1/Z	\$66	HS-1802P/02P-02-1/Z	\$108
HA-1802P/02P-03-1/Z	\$78	HS-1802P/02P-03-1/Z	\$162
HA-1802P/02P-04-1/Z	\$92	HS-1802P/02P-04-1/Z	\$265
HA-1802P/02P-05-1/Z	\$119	HS-1802P/02P-05-1/Z	\$284
HA-1802P/02P-06-1/Z	\$132	HS-1802P/02P-06-1/Z	\$317
HA-1802P/02P-07-1/Z	\$164	HS-1802P/02P-07-1/Z	\$387
HA-1802P/02P-08-1/Z	\$167	HS-1802P/02P-08-1/Z	\$464
HA-1802P/02P-09-1/Z	\$205	HS-1802P/02P-09-1/Z	\$516
HA-1802P/02P-10-1/Z	\$257	HS-1802P/02P-10-1/Z	\$576

## 1/4" NPT End Ports w/ 1/8" NPT Side Ports

Aluminum / 180 Degree		Steel / 180 Degree	
HA-1804P/02P-02-1/Z	\$73	HS-1804P/02P-02-1/Z	\$119
HA-1804P/02P-03-1/Z	\$86	HS-1804P/02P-03-1/Z	\$178
HA-1804P/02P-04-1/Z	\$102	HS-1804P/02P-04-1/Z	\$292
HA-1804P/02P-05-1/Z	\$131	HS-1804P/02P-05-1/Z	\$312
HA-1804P/02P-06-1/Z	\$145	HS-1804P/02P-06-1/Z	\$348
HA-1804P/02P-07-1/Z	\$180	HS-1804P/02P-07-1/Z	\$426
HA-1804P/02P-08-1/Z	\$184	HS-1804P/02P-08-1/Z	\$511
HA-1804P/02P-09-1/Z	\$225	HS-1804P/02P-09-1/Z	\$567
HA-1804P/02P-10-1/Z	\$283	HS-1804P/02P-10-1/Z	\$634

## 1/4" NPT (#4 SAE) End Ports w/ 1/4" NPT (#4 SAE) Side Ports

Aluminum / 180 Degree		Steel / 180 Degree	
HA-1804x/04x-02-1/Z	\$84	HS-1804x/04x-02-1/Z	\$179
HA-1804x/04x-03-1/Z	\$100	HS-1804x/04x-03-1/Z	\$246
HA-1804x/04x-04-1/Z	\$119	HS-1804x/04x-04-1/Z	\$298
HA-1804x/04x-05-1/Z	\$128	HS-1804x/04x-05-1/Z	\$320
HA-1804x/04x-06-1/Z	\$160	HS-1804x/04x-06-1/Z	\$352
HA-1804x/04x-07-1/Z	\$179	HS-1804x/04x-07-1/Z	\$414
HA-1804x/04x-08-1/Z	\$207	HS-1804x/04x-08-1/Z	\$517
HA-1804x/04x-09-1/Z	\$221	HS-1804x/04x-09-1/Z	\$549
HA-1804x/04x-10-1/Z	\$265	HS-1804x/04x-10-1/Z	\$617

## 3/8" NPT (#6 SAE) End Ports w/ 1/8" NPT Side Ports

Aluminum / 180 Degree		Steel / 180 Degree	
HA-1806x/02P-02-1/Z	\$66	HS-1806x/02x-02-1/Z	\$108
HA-1806x/02P-03-1/Z	\$78	HS-1806x/02x-03-1/Z	\$162
HA-1806x/02P-04-1/Z	\$92	HS-1806x/02x-04-1/Z	\$265
HA-1806x/02P-05-1/Z	\$119	HS-1806x/02x-05-1/Z	\$284
HA-1806x/02P-06-1/Z	\$132	HS-1806x/02x-06-1/Z	\$317
HA-1806x/02P-07-1/Z	\$164	HS-1806x/02x-07-1/Z	\$387
HA-1806x/02P-08-1/Z	\$167	HS-1806x/02x-08-1/Z	\$464
HA-1806x/02P-09-1/Z	\$205	HS-1806x/02x-09-1/Z	\$516
HA-1806x/02P-10-1/Z	\$257	HS-1806x/02x-10-1/Z	\$576

## 3/8" NPT (#6 SAE) End Ports w/ 1/4" NPT (#4 SAE) Side Ports

Aluminum / 180 Degree		Steel / 180 Degree	
HA-1806x/04x-02-1/Z	\$60.00	HS-1806x/04x-02-1/Z	\$98.00
HA-1806x/04x-03-1/Z	\$71.00	HS-1806x/04x-03-1/Z	\$147.00
HA-1806x/04x-04-1/Z	\$84.00	HS-1806x/04x-04-1/Z	\$241.00
HA-1806x/04x-05-1/Z	\$108.00	HS-1806x/04x-05-1/Z	\$258.00
HA-1806x/04x-06-1/Z	\$120.00	HS-1806x/04x-06-1/Z	\$288.00
HA-1806x/04x-07-1/Z	\$149.00	HS-1806x/04x-07-1/Z	\$352.00
HA-1806x/04x-08-1/Z	\$152.00	HS-1806x/04x-08-1/Z	\$422.00
HA-1806x/04x-09-1/Z	\$186.00	HS-1806x/04x-09-1/Z	\$469.00
HA-1806x/04x-10-1/Z	\$234.00	HS-1806x/04x-10-1/Z	\$524.00

\* Please Note: Header Bar Manifolds are Non-Returnable

Note: x - End & Side Port Thread Code

P - NPT Threads

S - SAE Threads

BSPP, BSPT and Metric threads are also available, consult factory for price.

"Standard" Port Sizes and combinations are shown. Header Manifolds with "Non-Standard" Port Sizes or combinations are available - Request Quote.



# Header Bar Manifolds\* with NPT & SAE Ports - 180 Degree

## 3/8" NPT (#6 SAE) End Ports w / 3/8" NPT (#6 SAE) Side Ports

Aluminum / 180 Degree		Steel / 180 Degree	
HA-1806x/06x-02-1/Z	\$84	HS-1806x/06x-02-1/Z	\$179
HA-1806x/06x-03-1/Z	\$100	HS-1806x/06x-03-1/Z	\$246
HA-1806x/06x-04-1/Z	\$119	HS-1806x/06x-04-1/Z	\$298
HA-1806x/06x-05-1/Z	\$128	HS-1806x/06x-05-1/Z	\$320
HA-1806x/06x-06-1/Z	\$160	HS-1806x/06x-06-1/Z	\$352
HA-1806x/06x-07-1/Z	\$179	HS-1806x/06x-07-1/Z	\$414
HA-1806x/06x-08-1/Z	\$207	HS-1806x/06x-08-1/Z	\$517
HA-1806x/06x-09-1/Z	\$221	HS-1806x/06x-09-1/Z	\$549
HA-1806x/06x-10-1/Z	\$265	HS-1806x/06x-10-1/Z	\$617

## 1/2" NPT (#8 SAE) End Ports w / 1/4" NPT (#4 SAE) Side Ports

Aluminum / 180 Degree		Steel / 180 Degree	
HA-1808x/04x-02-1/Z	\$84	HS-1808x/04x-02-1/Z	\$179
HA-1808x/04x-03-1/Z	\$100	HS-1808x/04x-03-1/Z	\$246
HA-1808x/04x-04-1/Z	\$119	HS-1808x/04x-04-1/Z	\$298
HA-1808x/04x-05-1/Z	\$128	HS-1808x/04x-05-1/Z	\$320
HA-1808x/04x-06-1/Z	\$160	HS-1808x/04x-06-1/Z	\$352
HA-1808x/04x-07-1/Z	\$179	HS-1808x/04x-07-1/Z	\$414
HA-1808x/04x-08-1/Z	\$207	HS-1808x/04x-08-1/Z	\$517
HA-1808x/04x-09-1/Z	\$221	HS-1808x/04x-09-1/Z	\$549
HA-1808x/04x-10-1/Z	\$265	HS-1808x/04x-10-1/Z	\$617

## 1/2" NPT (#8 SAE) End Ports w / 3/8" NPT (#6 SAE) Side Ports

Aluminum / 180 Degree		Steel / 180 Degree	
HA-1808x/06x-02-1/Z	\$76.00	HS-1808x/06x-02-1/Z	\$163.00
HA-1808x/06x-03-1/Z	\$91.00	HS-1808x/06x-03-1/Z	\$224.00
HA-1808x/06x-04-1/Z	\$108.00	HS-1808x/06x-04-1/Z	\$271.00
HA-1808x/06x-05-1/Z	\$116.00	HS-1808x/06x-05-1/Z	\$291.00
HA-1808x/06x-06-1/Z	\$145.00	HS-1808x/06x-06-1/Z	\$320.00
HA-1808x/06x-07-1/Z	\$163.00	HS-1808x/06x-07-1/Z	\$376.00
HA-1808x/06x-08-1/Z	\$188.00	HS-1808x/06x-08-1/Z	\$470.00
HA-1808x/06x-09-1/Z	\$201.00	HS-1808x/06x-09-1/Z	\$499.00
HA-1808x/06x-10-1/Z	\$241.00	HS-1808x/06x-10-1/Z	\$561.00

## 1/2" NPT (#8 SAE) End Ports w / 1/2" NPT (#8 SAE) Side Ports

Aluminum / 180 Degree		Steel / 180 Degree	
HA-1808x/08x-02-1/Z	\$92	HS-1808x/08x-02-1/Z	\$197
HA-1808x/08x-03-1/Z	\$110	HS-1808x/08x-03-1/Z	\$271
HA-1808x/08x-04-1/Z	\$131	HS-1808x/08x-04-1/Z	\$328
HA-1808x/08x-05-1/Z	\$140	HS-1808x/08x-05-1/Z	\$352
HA-1808x/08x-06-1/Z	\$175	HS-1808x/08x-06-1/Z	\$387
HA-1808x/08x-07-1/Z	\$197	HS-1808x/08x-07-1/Z	\$455
HA-1808x/08x-08-1/Z	\$227	HS-1808x/08x-08-1/Z	\$569
HA-1808x/08x-09-1/Z	\$243	HS-1808x/08x-09-1/Z	\$604
HA-1808x/08x-10-1/Z	\$292	HS-1808x/08x-10-1/Z	\$679

## 3/4" NPT (#12 SAE) End Ports w / 3/8" NPT (#6 SAE) Side Ports

Aluminum / 180 Degree		Steel / 180 Degree	
HA-1812x/06x-02-1/Z	\$118	HS-1812x/06x-02-1/Z	\$241
HA-1812x/06x-03-1/Z	\$174	HS-1812x/06x-03-1/Z	\$345
HA-1812x/06x-04-1/Z	\$209	HS-1812x/06x-04-1/Z	\$476
HA-1812x/06x-05-1/Z	\$276	HS-1812x/06x-05-1/Z	\$596
HA-1812x/06x-06-1/Z	\$293	HS-1812x/06x-06-1/Z	\$686
HA-1812x/06x-07-1/Z	\$332	HS-1812x/06x-07-1/Z	\$856
HA-1812x/06x-08-1/Z	\$426	HS-1812x/06x-08-1/Z	\$868
HA-1812x/06x-09-1/Z	\$422	HS-1812x/06x-09-1/Z	\$957

## 3/4" NPT (#12 SAE) End Ports w / 1/2" NPT (#8 SAE) Side Ports

Aluminum / 180 Degree		Steel / 180 Degree	
HA-1812x/08x-02-1/Z	\$107.00	HS-1812x/08x-02-1/Z	\$219.00
HA-1812x/08x-03-1/Z	\$158.00	HS-1812x/08x-03-1/Z	\$314.00
HA-1812x/08x-04-1/Z	\$190.00	HS-1812x/08x-04-1/Z	\$433.00
HA-1812x/08x-05-1/Z	\$251.00	HS-1812x/08x-05-1/Z	\$542.00
HA-1812x/08x-06-1/Z	\$266.00	HS-1812x/08x-06-1/Z	\$624.00
HA-1812x/08x-07-1/Z	\$302.00	HS-1812x/08x-07-1/Z	\$778.00
HA-1812x/08x-08-1/Z	\$387.00	HS-1812x/08x-08-1/Z	\$789.00
HA-1812x/08x-09-1/Z	\$384.00	HS-1812x/08x-09-1/Z	\$870.00

\* Please Note: Header Bar Manifolds are Non-Returnable

Note: x - End & Side Port Thread Code

P - NPT Threads

S - SAE Threads

BSPP, BSPT and Metric threads are also available, consult factory for price.

"Standard" Port Sizes and combinations are shown. Header Manifolds with "Non-Standard" Port Sizes or combinations are available - Request Quote.

# Header Bar Manifolds\* with NPT & SAE Ports - 180 Degree



## 3/4" NPT (#12 SAE) End Ports w / 3/4" NPT (#12 SAE) Side Ports

Aluminum / 180 Degree		Steel / 180 Degree	
HA-1812x/12x-02-1/Z	\$118	HS-1812x/12x-02-1/Z	\$241
HA-1812x/12x-03-1/Z	\$174	HS-1812x/12x-03-1/Z	\$345
HA-1812x/12x-04-1/Z	\$209	HS-1812x/12x-04-1/Z	\$476
HA-1812x/12x-05-1/Z	\$276	HS-1812x/12x-05-1/Z	\$596
HA-1812x/12x-06-1/Z	\$293	HS-1812x/12x-06-1/Z	\$686
HA-1812x/12x-07-1/Z	\$332	HS-1812x/12x-07-1/Z	\$856

## 1" NPT (#16 SAE) End Ports w / 1/2" NPT (#8 SAE) Side Ports

Aluminum / 180 Degree		Steel / 180 Degree	
HA-1816x/08x-02-1/Z	\$135	HS-1816x/08x-02-1/Z	\$326
HA-1816x/08x-03-1/Z	\$189	HS-1816x/08x-03-1/Z	\$447
HA-1816x/08x-04-1/Z	\$241	HS-1816x/08x-04-1/Z	\$670
HA-1816x/08x-05-1/Z	\$295	HS-1816x/08x-05-1/Z	\$806
HA-1816x/08x-06-1/Z	\$410	HS-1816x/08x-06-1/Z	\$921
HA-1816x/08x-07-1/Z	\$458	HS-1816x/08x-07-1/Z	\$1,110

## 1" NPT (#16 SAE) End Ports w / 3/4" NPT (#12 SAE) Side Ports

Aluminum / 180 Degree		Steel / 180 Degree	
HA-1816x/12x-02-1/Z	\$123.00	HS-1816x/12x-02-1/Z	\$296.00
HA-1816x/12x-03-1/Z	\$172.00	HS-1816x/12x-03-1/Z	\$406.00
HA-1816x/12x-04-1/Z	\$219.00	HS-1816x/12x-04-1/Z	\$609.00
HA-1816x/12x-05-1/Z	\$268.00	HS-1816x/12x-05-1/Z	\$733.00
HA-1816x/12x-06-1/Z	\$373.00	HS-1816x/12x-06-1/Z	\$837.00
HA-1816x/12x-07-1/Z	\$416.00	HS-1816x/12x-07-1/Z	\$1,009.00

## 1" NPT (#16 SAE) End Ports w / 1" NPT (#16 SAE) Side Ports

Aluminum / 180 Degree		Steel / 180 Degree	
HA-1816x/16x-02-1/Z	\$135	HS-1816x/16x-02-1/Z	\$326
HA-1816x/16x-03-1/Z	\$189	HS-1816x/16x-03-1/Z	\$447
HA-1816x/16x-04-1/Z	\$241	HS-1816x/16x-04-1/Z	\$670
HA-1816x/16x-05-1/Z	\$295	HS-1816x/16x-05-1/Z	\$806
HA-1816x/16x-06-1/Z	\$410	HS-1816x/16x-06-1/Z	\$921
HA-1816x/16x-07-1/Z	\$458	HS-1816x/16x-07-1/Z	\$1,110

## 1 1/4" NPT (#20 SAE) End Ports w / 3/4" NPT (#12 SAE) Side Ports

Aluminum / 180 Degree		Steel / 180 Degree	
HA-1820x/12x-02-1/Z	\$195	HS-1820x/12x-02-1/Z	\$344
HA-1820x/12x-03-1/Z	\$244	HS-1820x/12x-03-1/Z	\$480
HA-1820x/12x-04-1/Z	\$317	HS-1820x/12x-04-1/Z	\$673
HA-1820x/12x-05-1/Z	\$351	HS-1820x/12x-05-1/Z	\$803
HA-1820x/12x-06-1/Z	\$416	HS-1820x/12x-06-1/Z	\$952
HA-1820x/12x-07-1/Z	\$457	HS-1820x/12x-07-1/Z	\$1,047

## 1 1/4" NPT (#20 SAE) End Ports w / 1" NPT (#16 SAE) Side Ports

Aluminum / 180 Degree		Steel / 180 Degree	
HA-1820x/16x-02-1/Z	\$177.00	HS-1820x/16x-02-1/Z	\$313.00
HA-1820x/16x-03-1/Z	\$222.00	HS-1820x/16x-03-1/Z	\$436.00
HA-1820x/16x-04-1/Z	\$288.00	HS-1820x/16x-04-1/Z	\$612.00
HA-1820x/16x-05-1/Z	\$319.00	HS-1820x/16x-05-1/Z	\$730.00
HA-1820x/16x-06-1/Z	\$378.00	HS-1820x/16x-06-1/Z	\$865.00

## 1 1/4" NPT (#20 SAE) End Ports w / 1 1/4" NPT (#20 SAE) Side Ports

Aluminum / 180 Degree		Steel / 180 Degree	
HA-1820x/20x-02-1/Z	\$195	HS-1820x/20x-02-1/Z	\$344
HA-1820x/20x-03-1/Z	\$244	HS-1820x/20x-03-1/Z	\$480
HA-1820x/20x-04-1/Z	\$317	HS-1820x/20x-04-1/Z	\$673
HA-1820x/20x-05-1/Z	\$351	HS-1820x/20x-05-1/Z	\$803

## 1 1/2" NPT (#24 SAE) End Ports w / 1" NPT (#16 SAE) Side Ports

Aluminum / 180 Degree		Steel / 180 Degree	
HA-1824x/16x-02-1/Z	\$287	HS-1824x/16x-02-1/Z	\$492
HA-1824x/16x-03-1/Z	\$325	HS-1824x/16x-03-1/Z	\$615
HA-1824x/16x-04-1/Z	\$410	HS-1824x/16x-04-1/Z	\$853
HA-1824x/16x-05-1/Z	\$465	HS-1824x/16x-05-1/Z	\$1,047
HA-1824x/16x-06-1/Z	\$512	HS-1824x/16x-06-1/Z	\$1,152

\* Please Note: Header Bar Manifolds are Non-Returnable

Note: x - End & Side Port Thread Code

P - NPT Threads

S - SAE Threads

BSPP, BSPT and Metric threads are also available, consult factory for price.

"Standard" Port Sizes and combinations are shown. Header Manifolds with "Non-Standard" Port Sizes or combinations are available - Request Quote.



# Header Bar Manifolds\* with NPT & SAE Ports - 180 Degree

## 1 1/2" NPT (#24 SAE) End Ports w / 1 1/4" NPT (#20 SAE) Side Ports

Aluminum / 180 Degree		Steel / 180 Degree	
HA-1824x/20x-02-1/Z	\$261.00	HS-1824x/20x-02-1/Z	\$447.00
HA-1824x/20x-03-1/Z	\$295.00	HS-1824x/20x-03-1/Z	\$559.00
HA-1824x/20x-04-1/Z	\$373.00	HS-1824x/20x-04-1/Z	\$775.00
HA-1824x/20x-05-1/Z	\$423.00	HS-1824x/20x-05-1/Z	\$952.00

## 1 1/2" NPT (#24 SAE) End Ports w / 1 1/2" NPT (#24 SAE) Side Ports

Aluminum / 180 Degree		Steel / 180 Degree	
HA-1824x/24x-02-1/Z	\$287	HS-1824x/24x-02-1/Z	\$492
HA-1824x/24x-03-1/Z	\$325	HS-1824x/24x-03-1/Z	\$660
HA-1824x/24x-04-1/Z	\$410	HS-1824x/24x-04-1/Z	\$853

## 2" NPT End Ports w / 1 1/2" NPT (#24 SAE) Side Ports

Aluminum / 180 Degree		Steel / 180 Degree	
HA-1832P/24x-02-1/Z	\$303	HS-1832P/24x-02-1/Z	\$632
HA-1832P/24x-03-1/Z	\$433	HS-1832P/24x-03-1/Z	\$829
HA-1832P/24x-04-1/Z	\$517	HS-1832P/24x-04-1/Z	\$1,141

## #32 SAE End Ports w / 1 1/2" NPT (#24 SAE) Side Ports

Aluminum / 180 Degree		Steel / 180 Degree	
HA-1832S/24x-02-1/Z	\$303	HS-1832S/24x-02-1/Z	\$632
HA-1832S/24x-03-1/Z	\$433	HS-1832S/24x-03-1/Z	\$829
HA-1832S/24x-04-1/Z	\$517	HS-1832S/24x-04-1/Z	\$1,141

\* Please Note: Header Bar Manifolds are Non-Returnable

Note: x - End & Side Port Thread Code

P - NPT Threads

S - SAE Threads

BSPP, BSPT and Metric threads are also available,  
consult factory for price.

"Standard" Port Sizes and combinations are shown. Header Manifolds with "Non-Standard" Port Sizes or combinations are available - Request Quote.

# Header Bar Manifolds\* with NPT & SAE Ports - 270 Degree



## 1/8" NPT End Ports w/ 1/16" NPT Side Ports

Aluminum / 270 Degree		Steel / 270 Degree	
HA-2702P/01P-02-1/Z	\$79	HS-2702P/01P-02-1/Z	\$129
HA-2702P/01P-03-1/Z	\$94	HS-2702P/01P-03-1/Z	\$194
HA-2702P/01P-04-1/Z	\$111	HS-2702P/01P-04-1/Z	\$318
HA-2702P/01P-05-1/Z	\$143	HS-2702P/01P-05-1/Z	\$341
HA-2702P/01P-06-1/Z	\$158	HS-2702P/01P-06-1/Z	\$380
HA-2702P/01P-07-1/Z	\$197	HS-2702P/01P-07-1/Z	\$465
HA-2702P/01P-08-1/Z	\$201	HS-2702P/01P-08-1/Z	\$557
HA-2702P/01P-09-1/Z	\$246	HS-2702P/01P-09-1/Z	\$619
HA-2702P/01P-10-1/Z	\$309	HS-2702P/01P-10-1/Z	\$692

## 1/8" NPT End Ports w/ 1/8" NPT Side Ports

Aluminum / 270 Degree		Steel / 270 Degree	
HA-2702P/02P-02-1/Z	\$79	HS-2702P/02P-02-1/Z	\$129
HA-2702P/02P-03-1/Z	\$94	HS-2702P/02P-03-1/Z	\$194
HA-2702P/02P-04-1/Z	\$111	HS-2702P/02P-04-1/Z	\$318
HA-2702P/02P-05-1/Z	\$143	HS-2702P/02P-05-1/Z	\$341
HA-2702P/02P-06-1/Z	\$158	HS-2702P/02P-06-1/Z	\$380
HA-2702P/02P-07-1/Z	\$197	HS-2702P/02P-07-1/Z	\$465
HA-2702P/02P-08-1/Z	\$201	HS-2702P/02P-08-1/Z	\$557
HA-2702P/02P-09-1/Z	\$246	HS-2702P/02P-09-1/Z	\$619
HA-2702P/02P-10-1/Z	\$309	HS-2702P/02P-10-1/Z	\$692

## 1/4" NPT End Ports w/ 1/8" NPT Side Ports

Aluminum / 270 Degree		Steel / 270 Degree	
HA-2704P/02P-02-1/Z	\$87	HS-2704P/02P-02-1/Z	\$142
HA-2704P/02P-03-1/Z	\$103	HS-2704P/02P-03-1/Z	\$213
HA-2704P/02P-04-1/Z	\$122	HS-2704P/02P-04-1/Z	\$350
HA-2704P/02P-05-1/Z	\$157	HS-2704P/02P-05-1/Z	\$375
HA-2704P/02P-06-1/Z	\$174	HS-2704P/02P-06-1/Z	\$418
HA-2704P/02P-07-1/Z	\$216	HS-2704P/02P-07-1/Z	\$511
HA-2704P/02P-08-1/Z	\$221	HS-2704P/02P-08-1/Z	\$613
HA-2704P/02P-09-1/Z	\$270	HS-2704P/02P-09-1/Z	\$681
HA-2704P/02P-10-1/Z	\$340	HS-2704P/02P-10-1/Z	\$761

## 1/4" NPT (#4 SAE) End Ports w/ 1/4" NPT (#4 SAE) Side Ports

Aluminum / 270 Degree		Steel / 270 Degree	
HA-2704x/04x-02-1/Z	\$100	HS-2704x/04x-02-1/Z	\$215
HA-2704x/04x-03-1/Z	\$120	HS-2704x/04x-03-1/Z	\$296
HA-2704x/04x-04-1/Z	\$143	HS-2704x/04x-04-1/Z	\$358
HA-2704x/04x-05-1/Z	\$153	HS-2704x/04x-05-1/Z	\$384
HA-2704x/04x-06-1/Z	\$191	HS-2704x/04x-06-1/Z	\$422
HA-2704x/04x-07-1/Z	\$215	HS-2704x/04x-07-1/Z	\$496
HA-2704x/04x-08-1/Z	\$248	HS-2704x/04x-08-1/Z	\$620
HA-2704x/04x-09-1/Z	\$265	HS-2704x/04x-09-1/Z	\$659
HA-2704x/04x-10-1/Z	\$318	HS-2704x/04x-10-1/Z	\$741

## 3/8" NPT (#6 SAE) End Ports w/ 1/8" NPT Side Ports

Aluminum / 270 Degree		Steel / 270 Degree	
HA-2706x/02P-02-1/Z	\$79	HS-2706x/02x-02-1/Z	\$129
HA-2706x/02P-03-1/Z	\$94	HS-2706x/02x-03-1/Z	\$194
HA-2706x/02P-04-1/Z	\$111	HS-2706x/02x-04-1/Z	\$318
HA-2706x/02P-05-1/Z	\$143	HS-2706x/02x-05-1/Z	\$341
HA-2706x/02P-06-1/Z	\$158	HS-2706x/02x-06-1/Z	\$380
HA-2706x/02P-07-1/Z	\$197	HS-2706x/02x-07-1/Z	\$465
HA-2706x/02P-08-1/Z	\$201	HS-2706x/02x-08-1/Z	\$557
HA-2706x/02P-09-1/Z	\$246	HS-2706x/02x-09-1/Z	\$619
HA-2706x/02P-10-1/Z	\$309	HS-2706x/02x-10-1/Z	\$692

## 3/8" NPT (#6 SAE) End Ports w/ 1/4" NPT (#4 SAE) Side Ports

Aluminum / 270 Degree		Steel / 270 Degree	
HA-2706x/04x-02-1/Z	\$72	HS-2706x/04x-02-1/Z	\$118
HA-2706x/04x-03-1/Z	\$85	HS-2706x/04x-03-1/Z	\$176
HA-2706x/04x-04-1/Z	\$101	HS-2706x/04x-04-1/Z	\$289
HA-2706x/04x-05-1/Z	\$130	HS-2706x/04x-05-1/Z	\$310
HA-2706x/04x-06-1/Z	\$144	HS-2706x/04x-06-1/Z	\$346
HA-2706x/04x-07-1/Z	\$179	HS-2706x/04x-07-1/Z	\$422
HA-2706x/04x-08-1/Z	\$182	HS-2706x/04x-08-1/Z	\$506
HA-2706x/04x-09-1/Z	\$223	HS-2706x/04x-09-1/Z	\$563
HA-2706x/04x-10-1/Z	\$281	HS-2706x/04x-10-1/Z	\$629

\* Please Note: Header Bar Manifolds are Non-Returnable

Note: x - End & Side Port Thread Code

P - NPT Threads

S - SAE Threads

BSPP, BSPT and Metric threads are also available, consult factory for price.

"Standard" Port Sizes and combinations are shown. Header Manifolds with "Non-Standard" Port Sizes or combinations are available - Request Quote.



# Header Bar Manifolds\* with NPT & SAE Ports - 270 Degree

## 3/8" NPT (#6 SAE) End Ports w / 3/8" NPT (#6 SAE) Side Ports

Aluminum / 270 Degree		Steel / 270 Degree	
HA-2706x/06x-02-1/Z	\$100	HS-2706x/06x-02-1/Z	\$215
HA-2706x/06x-03-1/Z	\$120	HS-2706x/06x-03-1/Z	\$296
HA-2706x/06x-04-1/Z	\$143	HS-2706x/06x-04-1/Z	\$358
HA-2706x/06x-05-1/Z	\$153	HS-2706x/06x-05-1/Z	\$384
HA-2706x/06x-06-1/Z	\$191	HS-2706x/06x-06-1/Z	\$422
HA-2706x/06x-07-1/Z	\$215	HS-2706x/06x-07-1/Z	\$496
HA-2706x/06x-08-1/Z	\$248	HS-2706x/06x-08-1/Z	\$620
HA-2706x/06x-09-1/Z	\$265	HS-2706x/06x-09-1/Z	\$659
HA-2706x/06x-10-1/Z	\$318	HS-2706x/06x-10-1/Z	\$741

## 1/2" NPT (#8 SAE) End Ports w / 1/4" NPT (#4 SAE) Side Ports

Aluminum / 270 Degree		Steel / 270 Degree	
HA-2708x/04x-02-1/Z	\$100	HS-2708x/04x-02-1/Z	\$215
HA-2708x/04x-03-1/Z	\$120	HS-2708x/04x-03-1/Z	\$296
HA-2708x/04x-04-1/Z	\$143	HS-2708x/04x-04-1/Z	\$358
HA-2708x/04x-05-1/Z	\$153	HS-2708x/04x-05-1/Z	\$384
HA-2708x/04x-06-1/Z	\$191	HS-2708x/04x-06-1/Z	\$422
HA-2708x/04x-07-1/Z	\$215	HS-2708x/04x-07-1/Z	\$496
HA-2708x/04x-08-1/Z	\$248	HS-2708x/04x-08-1/Z	\$620
HA-2708x/04x-09-1/Z	\$265	HS-2708x/04x-09-1/Z	\$659
HA-2708x/04x-10-1/Z	\$318	HS-2708x/04x-10-1/Z	\$741

## 1/2" NPT (#8 SAE) End Ports w / 3/8" NPT (#6 SAE) Side Ports

Aluminum / 270 Degree		Steel / 270 Degree	
HA-2708x/06x-02-1/Z	\$91	HS-2708x/06x-02-1/Z	\$196
HA-2708x/06x-03-1/Z	\$109	HS-2708x/06x-03-1/Z	\$269
HA-2708x/06x-04-1/Z	\$130	HS-2708x/06x-04-1/Z	\$325
HA-2708x/06x-05-1/Z	\$139	HS-2708x/06x-05-1/Z	\$349
HA-2708x/06x-06-1/Z	\$174	HS-2708x/06x-06-1/Z	\$384
HA-2708x/06x-07-1/Z	\$196	HS-2708x/06x-07-1/Z	\$451
HA-2708x/06x-08-1/Z	\$226	HS-2708x/06x-08-1/Z	\$564
HA-2708x/06x-09-1/Z	\$241	HS-2708x/06x-09-1/Z	\$599
HA-2708x/06x-10-1/Z	\$289	HS-2708x/06x-10-1/Z	\$673

## 1/2" NPT (#8 SAE) End Ports w / 1/2" NPT (#8 SAE) Side Ports

Aluminum / 270 Degree		Steel / 270 Degree	
HA-2708x/08x-02-1/Z	\$110	HS-2708x/08x-02-1/Z	\$237
HA-2708x/08x-03-1/Z	\$132	HS-2708x/08x-03-1/Z	\$325
HA-2708x/08x-04-1/Z	\$157	HS-2708x/08x-04-1/Z	\$393
HA-2708x/08x-05-1/Z	\$168	HS-2708x/08x-05-1/Z	\$423
HA-2708x/08x-06-1/Z	\$211	HS-2708x/08x-06-1/Z	\$465
HA-2708x/08x-07-1/Z	\$237	HS-2708x/08x-07-1/Z	\$546
HA-2708x/08x-08-1/Z	\$273	HS-2708x/08x-08-1/Z	\$682
HA-2708x/08x-09-1/Z	\$292	HS-2708x/08x-09-1/Z	\$725
HA-2708x/08x-10-1/Z	\$350	HS-2708x/08x-10-1/Z	\$815

## 3/4" NPT (#12 SAE) End Ports w / 3/8" NPT (#6 SAE) Side Ports

Aluminum / 270 Degree		Steel / 270 Degree	
HA-2712x/06x-02-1/Z	\$141	HS-2712x/06x-02-1/Z	\$289
HA-2712x/06x-03-1/Z	\$209	HS-2712x/06x-03-1/Z	\$414
HA-2712x/06x-04-1/Z	\$251	HS-2712x/06x-04-1/Z	\$572
HA-2712x/06x-05-1/Z	\$331	HS-2712x/06x-05-1/Z	\$715
HA-2712x/06x-06-1/Z	\$351	HS-2712x/06x-06-1/Z	\$824
HA-2712x/06x-07-1/Z	\$399	HS-2712x/06x-07-1/Z	\$1,027
HA-2712x/06x-08-1/Z	\$511	HS-2712x/06x-08-1/Z	\$1,041
HA-2712x/06x-09-1/Z	\$507	HS-2712x/06x-09-1/Z	\$1,148

## 3/4" NPT (#12 SAE) End Ports w / 1/2" NPT (#8 SAE) Side Ports

Aluminum / 270 Degree		Steel / 270 Degree	
HA-2712x/08x-02-1/Z	\$128	HS-2712x/08x-02-1/Z	\$263
HA-2712x/08x-03-1/Z	\$190	HS-2712x/08x-03-1/Z	\$377
HA-2712x/08x-04-1/Z	\$228	HS-2712x/08x-04-1/Z	\$520
HA-2712x/08x-05-1/Z	\$301	HS-2712x/08x-05-1/Z	\$650
HA-2712x/08x-06-1/Z	\$319	HS-2712x/08x-06-1/Z	\$749
HA-2712x/08x-07-1/Z	\$362	HS-2712x/08x-07-1/Z	\$934
HA-2712x/08x-08-1/Z	\$464	HS-2712x/08x-08-1/Z	\$947
HA-2712x/08x-09-1/Z	\$461	HS-2712x/08x-09-1/Z	\$1,044

\* Please Note: Header Bar Manifolds are Non-Returnable

Note: x - End & Side Port Thread Code

P - NPT Threads

S - SAE Threads

BSPP, BSPT and Metric threads are also available, consult factory for price.

"Standard" Port Sizes and combinations are shown. Header Manifolds with "Non-Standard" Port Sizes or combinations are available - Request Quote.

# Header Bar Manifolds\* with NPT & SAE Ports - 270 Degree



## 3/4" NPT (#12 SAE) End Ports w / 3/4" NPT (#12 SAE) Side Ports

Aluminum / 270 Degree		Steel / 270 Degree	
HA-2712x/12x-02-1/Z	\$141	HS-2712x/12x-02-1/Z	\$289
HA-2712x/12x-03-1/Z	\$209	HS-2712x/12x-03-1/Z	\$414
HA-2712x/12x-04-1/Z	\$251	HS-2712x/12x-04-1/Z	\$572
HA-2712x/12x-05-1/Z	\$331	HS-2712x/12x-05-1/Z	\$715
HA-2712x/12x-06-1/Z	\$351	HS-2712x/12x-06-1/Z	\$824
HA-2712x/12x-07-1/Z	\$399	HS-2712x/12x-07-1/Z	\$1,027

## 1" NPT (#16 SAE) End Ports w / 1/2" NPT (#8 SAE) Side Ports

Aluminum / 270 Degree		Steel / 270 Degree	
HA-2716x/08x-02-1/Z	\$162	HS-2716x/08x-02-1/Z	\$391
HA-2716x/08x-03-1/Z	\$227	HS-2716x/08x-03-1/Z	\$536
HA-2716x/08x-04-1/Z	\$289	HS-2716x/08x-04-1/Z	\$804
HA-2716x/08x-05-1/Z	\$354	HS-2716x/08x-05-1/Z	\$968
HA-2716x/08x-06-1/Z	\$492	HS-2716x/08x-06-1/Z	\$1,105
HA-2716x/08x-07-1/Z	\$549	HS-2716x/08x-07-1/Z	\$1,332

## 1" NPT (#16 SAE) End Ports w / 3/4" NPT (#12 SAE) Side Ports

Aluminum / 270 Degree		Steel / 270 Degree	
HA-2716x/12x-02-1/Z	\$148	HS-2716x/12x-02-1/Z	\$355
HA-2716x/12x-03-1/Z	\$206	HS-2716x/12x-03-1/Z	\$487
HA-2716x/12x-04-1/Z	\$263	HS-2716x/12x-04-1/Z	\$731
HA-2716x/12x-05-1/Z	\$322	HS-2716x/12x-05-1/Z	\$880
HA-2716x/12x-06-1/Z	\$448	HS-2716x/12x-06-1/Z	\$1,004
HA-2716x/12x-07-1/Z	\$499	HS-2716x/12x-07-1/Z	\$1,211

## 1" NPT (#16 SAE) End Ports w / 1" NPT (#16 SAE) Side Ports

Aluminum / 270 Degree		Steel / 270 Degree	
HA-2716x/16x-02-1/Z	\$162	HS-2716x/16x-02-1/Z	\$391
HA-2716x/16x-03-1/Z	\$227	HS-2716x/16x-03-1/Z	\$536
HA-2716x/16x-04-1/Z	\$289	HS-2716x/16x-04-1/Z	\$804
HA-2716x/16x-05-1/Z	\$354	HS-2716x/16x-05-1/Z	\$968
HA-2716x/16x-06-1/Z	\$492	HS-2716x/16x-06-1/Z	\$1,105
HA-2716x/16x-07-1/Z	\$549	HS-2716x/16x-07-1/Z	\$1,332

## 1 1/4" NPT (#20 SAE) End Ports w / 3/4" NPT (#12 SAE) Side Ports

Aluminum / 270 Degree		Steel / 270 Degree	
HA-2720x/12x-02-1/Z	\$234	HS-2720x/12x-02-1/Z	\$413
HA-2720x/12x-03-1/Z	\$293	HS-2720x/12x-03-1/Z	\$576
HA-2720x/12x-04-1/Z	\$380	HS-2720x/12x-04-1/Z	\$808
HA-2720x/12x-05-1/Z	\$421	HS-2720x/12x-05-1/Z	\$964
HA-2720x/12x-06-1/Z	\$499	HS-2720x/12x-06-1/Z	\$1,142
HA-2720x/12x-07-1/Z	\$549	HS-2720x/12x-07-1/Z	\$1,256

## 1 1/4" NPT (#20 SAE) End Ports w / 1" NPT (#16 SAE) Side Ports

Aluminum / 270 Degree		Steel / 270 Degree	
HA-2720x/16x-02-1/Z	\$212	HS-2720x/16x-02-1/Z	\$376
HA-2720x/16x-03-1/Z	\$266	HS-2720x/16x-03-1/Z	\$523
HA-2720x/16x-04-1/Z	\$346	HS-2720x/16x-04-1/Z	\$734
HA-2720x/16x-05-1/Z	\$383	HS-2720x/16x-05-1/Z	\$876
HA-2720x/16x-06-1/Z	\$454	HS-2720x/16x-06-1/Z	\$1,038

## 1 1/4" NPT (#20 SAE) End Ports w / 1 1/4" NPT (#20 SAE) Side Ports

Aluminum / 270 Degree		Steel / 270 Degree	
HA-2720x/20x-02-1/Z	\$234	HS-2720x/20x-02-1/Z	\$413
HA-2720x/20x-03-1/Z	\$293	HS-2720x/20x-03-1/Z	\$576
HA-2720x/20x-04-1/Z	\$380	HS-2720x/20x-04-1/Z	\$808
HA-2720x/20x-05-1/Z	\$421	HS-2720x/20x-05-1/Z	\$964

## 1 1/2" NPT (#24 SAE) End Ports w / 1" NPT (#16 SAE) Side Ports

Aluminum / 270 Degree		Steel / 270 Degree	
HA-2724x/16x-02-1/Z	\$345	HS-2724x/16x-02-1/Z	\$590
HA-2724x/16x-03-1/Z	\$389	HS-2724x/16x-03-1/Z	\$738
HA-2724x/16x-04-1/Z	\$492	HS-2724x/16x-04-1/Z	\$1,023
HA-2724x/16x-05-1/Z	\$558	HS-2724x/16x-05-1/Z	\$1,257
HA-2724x/16x-06-1/Z	\$614	HS-2724x/16x-06-1/Z	\$1,382

\* Please Note: Header Bar Manifolds are Non-Returnable

Note: x - End & Side Port Thread Code

P - NPT Threads

S - SAE Threads

BSPP, BSPT and Metric threads are also available, consult factory for price.

"Standard" Port Sizes and combinations are shown. Header Manifolds with "Non-Standard" Port Sizes or combinations are available - Request Quote.



# Header Bar Manifolds\* with NPT & SAE Ports - 270 Degree

## 1 1/2" NPT (#24 SAE) End Ports w / 1 1/4" NPT (#20 SAE) Side Ports

Aluminum / 270 Degree		Steel / 270 Degree	
HA-2724x/20x-02-1/Z	\$313	HS-2724x/20x-02-1/Z	\$536
HA-2724x/20x-03-1/Z	\$354	HS-2724x/20x-03-1/Z	\$671
HA-2724x/20x-04-1/Z	\$448	HS-2724x/20x-04-1/Z	\$930
HA-2724x/20x-05-1/Z	\$508	HS-2724x/20x-05-1/Z	\$1,142

## 1 1/2" NPT (#24 SAE) End Ports w / 1 1/2" NPT (#24 SAE) Side Ports

Aluminum / 270 Degree		Steel / 270 Degree	
HA-2724x/24x-02-1/Z	\$345	HS-2724x/24x-02-1/Z	\$590
HA-2724x/24x-03-1/Z	\$389	HS-2724x/24x-03-1/Z	\$792
HA-2724x/24x-04-1/Z	\$492	HS-2724x/24x-04-1/Z	\$1,023

## #32 SAE End Ports w / 1 1/2" NPT (#24 SAE) Side Ports

Aluminum / 270 Degree		Steel / 270 Degree	
HA-2732S/24x-02-1/Z	\$364	HS-2732S/24x-02-1/Z	\$758
HA-2732S/24x-03-1/Z	\$520	HS-2732S/24x-03-1/Z	\$995
HA-2732S/24x-04-1/Z	\$620	HS-2732S/24x-04-1/Z	\$1,369

## 2" NPT End Ports w / 1 1/2" NPT (#24 SAE) Side Ports

Aluminum / 270 Degree		Steel / 270 Degree	
HA-2732P/24x-02-1/Z	\$364	HS-2732P/24x-02-1/Z	\$758
HA-2732P/24x-03-1/Z	\$520	HS-2732P/24x-03-1/Z	\$995
HA-2732P/24x-04-1/Z	\$620	HS-2732P/24x-04-1/Z	\$1,369

\* Please Note: Header Bar Manifolds are Non-Returnable

Note: x - End & Side Port Thread Code

P - NPT Threads

S - SAE Threads

BSPP, BSPT and Metric threads are also available,  
consult factory for price.

"Standard" Port Sizes and combinations are shown. Header Manifolds with "Non-Standard" Port Sizes or combinations are available - Request Quote.

# Junction Bar Manifolds\* with NPT & SAE Ports - 90 Degree



## 1/16" NPT Side Ports

Aluminum / 90 Degree		Steel / 90 Degree	
JA-09000/01P-02-1/Z	\$49.00	JS-09000/01P-02-1/Z	\$157.00
JA-09000/01P-03-1/Z	\$63.00	JS-09000/01P-03-1/Z	\$188.00
JA-09000/01P-04-1/Z	\$78.00	JS-09000/01P-04-1/Z	\$229.00
JA-09000/01P-05-1/Z	\$89.00	JS-09000/01P-05-1/Z	\$254.00
JA-09000/01P-06-1/Z	\$98.00	JS-09000/01P-06-1/Z	\$290.00
JA-09000/01P-07-1/Z	\$123.00	JS-09000/01P-07-1/Z	\$319.00
JA-09000/01P-08-1/Z	\$134.00	JS-09000/01P-08-1/Z	\$367.00
JA-09000/01P-09-1/Z	\$153.00	JS-09000/01P-09-1/Z	\$404.00
JA-09000/01P-10-1/Z	\$184.00	JS-09000/01P-10-1/Z	\$462.00

## 1/8" NPT Side Ports

Aluminum / 90 Degree		Aluminum / 90 Degree	
JA-09000/02P-02-1/Z	\$49.00	JS-09000/02P-02-1/Z	\$157.00
JA-09000/02P-03-1/Z	\$63.00	JS-09000/02P-03-1/Z	\$188.00
JA-09000/02P-04-1/Z	\$78.00	JS-09000/02P-04-1/Z	\$229.00
JA-09000/02P-05-1/Z	\$89.00	JS-09000/02P-05-1/Z	\$254.00
JA-09000/02P-06-1/Z	\$98.00	JS-09000/02P-06-1/Z	\$290.00
JA-09000/02P-07-1/Z	\$123.00	JS-09000/02P-07-1/Z	\$319.00
JA-09000/02P-08-1/Z	\$134.00	JS-09000/02P-08-1/Z	\$367.00
JA-09000/02P-09-1/Z	\$153.00	JS-09000/02P-09-1/Z	\$404.00
JA-09000/02P-10-1/Z	\$184.00	JS-09000/02P-10-1/Z	\$462.00

## 1/4" NPT (#4 SAE) Side Ports

Aluminum / 90 Degree		Steel / 90 Degree	
JA-09000/04x-02-1/Z	\$49.00	JS-09000/04x-02-1/Z	\$157.00
JA-09000/04x-03-1/Z	\$63.00	JS-09000/04x-03-1/Z	\$188.00
JA-09000/04x-04-1/Z	\$78.00	JS-09000/04x-04-1/Z	\$229.00
JA-09000/04x-05-1/Z	\$89.00	JS-09000/04x-05-1/Z	\$254.00
JA-09000/04x-06-1/Z	\$98.00	JS-09000/04x-06-1/Z	\$290.00
JA-09000/04x-07-1/Z	\$123.00	JS-09000/04x-07-1/Z	\$319.00
JA-09000/04x-08-1/Z	\$134.00	JS-09000/04x-08-1/Z	\$367.00
JA-09000/04x-09-1/Z	\$153.00	JS-09000/04x-09-1/Z	\$404.00
JA-09000/04x-10-1/Z	\$184.00	JS-09000/04x-10-1/Z	\$462.00

## 3/8" NPT (#6 SAE) Side Ports

Aluminum / 90 Degree		Aluminum / 90 Degree	
JA-09000/06x-02-1/Z	\$54.00	JS-09000/06x-02-1/Z	\$169.00
JA-09000/06x-03-1/Z	\$83.00	JS-09000/06x-03-1/Z	\$212.00
JA-09000/06x-04-1/Z	\$96.00	JS-09000/06x-04-1/Z	\$252.00
JA-09000/06x-05-1/Z	\$105.00	JS-09000/06x-05-1/Z	\$271.00
JA-09000/06x-06-1/Z	\$123.00	JS-09000/06x-06-1/Z	\$301.00
JA-09000/06x-07-1/Z	\$132.00	JS-09000/06x-07-1/Z	\$338.00
JA-09000/06x-08-1/Z	\$161.00	JS-09000/06x-08-1/Z	\$374.00
JA-09000/06x-09-1/Z	\$179.00	JS-09000/06x-09-1/Z	\$423.00
JA-09000/06x-10-1/Z	\$204.00	JS-09000/06x-10-1/Z	\$469.00

## 1/2" NPT (#8 SAE) Side Ports

Aluminum / 90 Degree		Steel / 90 Degree	
JA-09000/08x-02-1/Z	\$59.00	JS-09000/08x-02-1/Z	\$180.00
JA-09000/08x-03-1/Z	\$94.00	JS-09000/08x-03-1/Z	\$217.00
JA-09000/08x-04-1/Z	\$103.00	JS-09000/08x-04-1/Z	\$267.00
JA-09000/08x-05-1/Z	\$125.00	JS-09000/08x-05-1/Z	\$301.00
JA-09000/08x-06-1/Z	\$140.00	JS-09000/08x-06-1/Z	\$338.00
JA-09000/08x-07-1/Z	\$164.00	JS-09000/08x-07-1/Z	\$374.00
JA-09000/08x-08-1/Z	\$197.00	JS-09000/08x-08-1/Z	\$411.00
JA-09000/08x-09-1/Z	\$207.00	JS-09000/08x-09-1/Z	\$460.00

## 3/4" NPT (#12 SAE) Side Ports

Aluminum / 90 Degree		Aluminum / 90 Degree	
JA-09000/12x-02-1/Z	\$87.00	JS-09000/12x-02-1/Z	\$199.00
JA-09000/12x-03-1/Z	\$146.00	JS-09000/12x-03-1/Z	\$261.00
JA-09000/12x-04-1/Z	\$161.00	JS-09000/12x-04-1/Z	\$328.00
JA-09000/12x-05-1/Z	\$194.00	JS-09000/12x-05-1/Z	\$385.00
JA-09000/12x-06-1/Z	\$204.00	JS-09000/12x-06-1/Z	\$447.00
JA-09000/12x-07-1/Z	\$267.00	JS-09000/12x-07-1/Z	\$514.00

## 1" NPT (#16 SAE) Side Ports

Aluminum / 90 Degree		Steel / 90 Degree	
JA-09000/16x-02-1/Z	\$108.00	JS-09000/16x-02-1/Z	\$224.00
JA-09000/16x-03-1/Z	\$183.00	JS-09000/16x-03-1/Z	\$315.00
JA-09000/16x-04-1/Z	\$223.00	JS-09000/16x-04-1/Z	\$408.00
JA-09000/16x-05-1/Z	\$247.00	JS-09000/16x-05-1/Z	\$494.00
JA-09000/16x-06-1/Z	\$286.00	JS-09000/16x-06-1/Z	\$579.00

\* Please Note: Junction Bar Manifolds are Non-Returnable

Note: x - End & Side Port Thread Code

P - NPT Threads

S - SAE Threads

BSPP, BSPT and Metric threads are also available, consult factory for price.

"Standard" Port Sizes and combinations are shown. Junction Manifolds with "Non-Standard" Port Sizes or combinations are available - Request Quote.



# Junction Bar Manifolds\* with NPT & SAE Ports - 90 Degree

## 1 1/2" NPT (#24 SAE) Side Ports

Aluminum / 90 Degree	
JA-09000/24x-02-1/Z	\$247.00
JA-09000/24x-03-1/Z	\$353.00
JA-09000/24x-04-1/Z	\$756.00

Steel / 90 Degree	
JS-09000/24x-02-1/Z	\$433.00
JS-09000/24x-03-1/Z	\$621.00
JS-09000/24x-04-1/Z	\$789.00

## 1 1/4" NPT (#20 SAE) Side Ports

Aluminum / 90 Degree	
JA-09000/20x-02-1/Z	\$181.00
JA-09000/20x-03-1/Z	\$248.00
JA-09000/20x-04-1/Z	\$318.00
JA-09000/20x-05-1/Z	\$357.00

Aluminum / 90 Degree	
JS-09000/20x-02-1/Z	\$313.00
JS-09000/20x-03-1/Z	\$421.00
JS-09000/20x-04-1/Z	\$555.00
JS-09000/20x-05-1/Z	\$667.00

\* Please Note: Junction Bar Manifolds are Non-Returnable

Note: x - End & Side Port Thread Code

P - NPT Threads

S - SAE Threads

BSPP, BSPT and Metric threads are also available, consult factory for price.

"Standard" Port Sizes and combinations are shown. Junction Manifolds with "Non-Standard" Port Sizes or combinations are available - Request Quote.

# Junction Bar Manifolds\* with NPT & SAE Ports - 180 Degree



## 1/16" NPT Side Ports

Aluminum / 180 Degree		Steel / 180 Degree	
JA-18000/01P-02-1/Z	\$55.00	JS-18000/01P-02-1/Z	\$180.00
JA-18000/01P-03-1/Z	\$63.00	JS-18000/01P-03-1/Z	\$212.00
JA-18000/01P-04-1/Z	\$66.00	JS-18000/01P-04-1/Z	\$252.00
JA-18000/01P-05-1/Z	\$89.00	JS-18000/01P-05-1/Z	\$271.00
JA-18000/01P-06-1/Z	\$100.00	JS-18000/01P-06-1/Z	\$309.00
JA-18000/01P-07-1/Z	\$112.00	JS-18000/01P-07-1/Z	\$357.00
JA-18000/01P-08-1/Z	\$127.00	JS-18000/01P-08-1/Z	\$422.00
JA-18000/01P-09-1/Z	\$141.00	JS-18000/01P-09-1/Z	\$450.00
JA-18000/01P-10-1/Z	\$165.00	JS-18000/01P-10-1/Z	\$487.00

## 1/8" NPT Side Ports

Aluminum / 180 Degree		Steel / 180 Degree	
JA-18000/02P-02-1/Z	\$55.00	JS-18000/02P-02-1/Z	\$180.00
JA-18000/02P-03-1/Z	\$63.00	JS-18000/02P-03-1/Z	\$212.00
JA-18000/02P-04-1/Z	\$66.00	JS-18000/02P-04-1/Z	\$252.00
JA-18000/02P-05-1/Z	\$89.00	JS-18000/02P-05-1/Z	\$271.00
JA-18000/02P-06-1/Z	\$100.00	JS-18000/02P-06-1/Z	\$309.00
JA-18000/02P-07-1/Z	\$112.00	JS-18000/02P-07-1/Z	\$357.00
JA-18000/02P-08-1/Z	\$127.00	JS-18000/02P-08-1/Z	\$422.00
JA-18000/02P-09-1/Z	\$141.00	JS-18000/02P-09-1/Z	\$450.00
JA-18000/02P-10-1/Z	\$165.00	JS-18000/02P-10-1/Z	\$487.00

## 1/4" NPT (#4 SAE) Side Ports

Aluminum / 180 Degree		Steel / 180 Degree	
JA-18000/04x-02-1/Z	\$55.00	JS-18000/04x-02-1/Z	\$180.00
JA-18000/04x-03-1/Z	\$63.00	JS-18000/04x-03-1/Z	\$212.00
JA-18000/04x-04-1/Z	\$66.00	JS-18000/04x-04-1/Z	\$252.00
JA-18000/04x-05-1/Z	\$89.00	JS-18000/04x-05-1/Z	\$271.00
JA-18000/04x-06-1/Z	\$100.00	JS-18000/04x-06-1/Z	\$309.00
JA-18000/04x-07-1/Z	\$112.00	JS-18000/04x-07-1/Z	\$357.00
JA-18000/04x-08-1/Z	\$127.00	JS-18000/04x-08-1/Z	\$422.00
JA-18000/04x-09-1/Z	\$141.00	JS-18000/04x-09-1/Z	\$450.00
JA-18000/04x-10-1/Z	\$165.00	JS-18000/04x-10-1/Z	\$487.00

## 3/8" NPT (#6 SAE) Side Ports

Aluminum / 180 Degree		Steel / 180 Degree	
JA-18000/06x-02-1/Z	\$55.00	JS-18000/06x-02-1/Z	\$180.00
JA-18000/06x-03-1/Z	\$63.00	JS-18000/06x-03-1/Z	\$229.00
JA-18000/06x-04-1/Z	\$76.00	JS-18000/06x-04-1/Z	\$261.00
JA-18000/06x-05-1/Z	\$97.00	JS-18000/06x-05-1/Z	\$292.00
JA-18000/06x-06-1/Z	\$106.00	JS-18000/06x-06-1/Z	\$319.00
JA-18000/06x-07-1/Z	\$118.00	JS-18000/06x-07-1/Z	\$374.00
JA-18000/06x-08-1/Z	\$147.00	JS-18000/06x-08-1/Z	\$432.00
JA-18000/06x-09-1/Z	\$163.00	JS-18000/06x-09-1/Z	\$469.00
JA-18000/06x-10-1/Z	\$180.00	JS-18000/06x-10-1/Z	\$507.00

## 1/2" NPT (#8 SAE) Side Ports

Aluminum / 180 Degree		Steel / 180 Degree	
JA-18000/08x-02-1/Z	\$58.00	JS-18000/08x-02-1/Z	\$196.00
JA-18000/08x-03-1/Z	\$78.00	JS-18000/08x-03-1/Z	\$241.00
JA-18000/08x-04-1/Z	\$98.00	JS-18000/08x-04-1/Z	\$278.00
JA-18000/08x-05-1/Z	\$123.00	JS-18000/08x-05-1/Z	\$300.00
JA-18000/08x-06-1/Z	\$136.00	JS-18000/08x-06-1/Z	\$354.00
JA-18000/08x-07-1/Z	\$161.00	JS-18000/08x-07-1/Z	\$393.00
JA-18000/08x-08-1/Z	\$188.00	JS-18000/08x-08-1/Z	\$447.00
JA-18000/08x-09-1/Z	\$196.00	JS-18000/08x-09-1/Z	\$531.00

## 3/4" NPT (#12 SAE) Side Ports

Aluminum / 180 Degree		Steel / 180 Degree	
JA-18000/12x-02-1/Z	\$92.00	JS-18000/12x-02-1/Z	\$219.00
JA-18000/12x-03-1/Z	\$133.00	JS-18000/12x-03-1/Z	\$279.00
JA-18000/12x-04-1/Z	\$152.00	JS-18000/12x-04-1/Z	\$363.00
JA-18000/12x-05-1/Z	\$184.00	JS-18000/12x-05-1/Z	\$410.00
JA-18000/12x-06-1/Z	\$218.00	JS-18000/12x-06-1/Z	\$459.00
JA-18000/12x-07-1/Z	\$250.00	JS-18000/12x-07-1/Z	\$524.00

## 1" NPT (#16 SAE) Side Ports

Aluminum / 180 Degree		Steel / 180 Degree	
JA-18000/16x-02-1/Z	\$112.00	JS-18000/16x-02-1/Z	\$243.00
JA-18000/16x-03-1/Z	\$165.00	JS-18000/16x-03-1/Z	\$321.00
JA-18000/16x-04-1/Z	\$215.00	JS-18000/16x-04-1/Z	\$418.00
JA-18000/16x-05-1/Z	\$239.00	JS-18000/16x-05-1/Z	\$494.00
JA-18000/16x-06-1/Z	\$301.00	JS-18000/16x-06-1/Z	\$579.00

\* Please Note: Junction Bar Manifolds are Non-Returnable

Note: x - End & Side Port Thread Code

P - NPT Threads

S - SAE Threads

BSPP, BSPT and Metric threads are also available, consult factory for price.

"Standard" Port Sizes and combinations are shown. Junction Manifolds with "Non-Standard" Port Sizes or combinations are available - Request Quote.



# Junction Bar Manifolds\* with NPT & SAE Ports - 180 Degree

## 1 1/2" NPT (#24 SAE) Side Ports

Aluminum / 180 Degree		Steel / 180 Degree	
JA-18000/24x-02-1/Z	\$247.00	JS-18000/24x-02-1/Z	\$444.00
JA-18000/24x-03-1/Z	\$294.00	JS-18000/24x-03-1/Z	\$540.00
JA-18000/24x-04-1/Z	\$379.00	JS-18000/24x-04-1/Z	\$789.00

## 1 1/4" NPT (#20 SAE) Side Ports

Aluminum / 180 Degree		Steel / 180 Degree	
JA-18000/20x-02-1/Z	\$179.00	JS-18000/20x-02-1/Z	\$338.00
JA-18000/20x-03-1/Z	\$228.00	JS-18000/20x-03-1/Z	\$433.00
JA-18000/20x-04-1/Z	\$290.00	JS-18000/20x-04-1/Z	\$555.00
JA-18000/20x-05-1/Z	\$326.00	JS-18000/20x-05-1/Z	\$679.00

\* Please Note: Junction Bar Manifolds are Non-Returnable

Note: x - End & Side Port Thread Code

P - NPT Threads

S - SAE Threads

BSPP, BSPT and Metric threads are also available, consult factory for price.

"Standard" Port Sizes and combinations are shown. Junction Manifolds with "Non-Standard" Port Sizes or combinations are available - Request Quote.

# Junction Bar Manifolds\* with NPT & SAE Ports - 270 Degree



## 1/16" NPT Side Ports

Aluminum / 270 Degree		Steel / 270 Degree	
JA-27000/01P-02-1/Z	\$65.00	JS-27000/01P-02-1/Z	\$194.00
JA-27000/01P-03-1/Z	\$78.00	JS-27000/01P-03-1/Z	\$267.00
JA-27000/01P-04-1/Z	\$92.00	JS-27000/01P-04-1/Z	\$309.00
JA-27000/01P-05-1/Z	\$109.00	JS-27000/01P-05-1/Z	\$319.00
JA-27000/01P-06-1/Z	\$126.00	JS-27000/01P-06-1/Z	\$348.00
JA-27000/01P-07-1/Z	\$144.00	JS-27000/01P-07-1/Z	\$397.00
JA-27000/01P-08-1/Z	\$161.00	JS-27000/01P-08-1/Z	\$444.00
JA-27000/01P-09-1/Z	\$175.00	JS-27000/01P-09-1/Z	\$478.00
JA-27000/01P-10-1/Z	\$188.00	JS-27000/01P-10-1/Z	\$537.00

## 1/8" NPT Side Ports

Aluminum / 270 Degree		Steel / 270 Degree	
JA-27000/02P-02-1/Z	\$65.00	JS-27000/02P-02-1/Z	\$194.00
JA-27000/02P-03-1/Z	\$78.00	JS-27000/02P-03-1/Z	\$267.00
JA-27000/02P-04-1/Z	\$92.00	JS-27000/02P-04-1/Z	\$309.00
JA-27000/02P-05-1/Z	\$109.00	JS-27000/02P-05-1/Z	\$319.00
JA-27000/02P-06-1/Z	\$126.00	JS-27000/02P-06-1/Z	\$348.00
JA-27000/02P-07-1/Z	\$144.00	JS-27000/02P-07-1/Z	\$397.00
JA-27000/02P-08-1/Z	\$161.00	JS-27000/02P-08-1/Z	\$444.00
JA-27000/02P-09-1/Z	\$175.00	JS-27000/02P-09-1/Z	\$478.00
JA-27000/02P-10-1/Z	\$188.00	JS-27000/02P-10-1/Z	\$537.00

## 1/4" NPT (#4 SAE) Side Ports

Aluminum / 270 Degree		Steel / 270 Degree	
JA-27000/04x-02-1/Z	\$65.00	JS-27000/04x-02-1/Z	\$194.00
JA-27000/04x-03-1/Z	\$78.00	JS-27000/04x-03-1/Z	\$267.00
JA-27000/04x-04-1/Z	\$92.00	JS-27000/04x-04-1/Z	\$309.00
JA-27000/04x-05-1/Z	\$109.00	JS-27000/04x-05-1/Z	\$319.00
JA-27000/04x-06-1/Z	\$126.00	JS-27000/04x-06-1/Z	\$348.00
JA-27000/04x-07-1/Z	\$144.00	JS-27000/04x-07-1/Z	\$397.00
JA-27000/04x-08-1/Z	\$161.00	JS-27000/04x-08-1/Z	\$444.00
JA-27000/04x-09-1/Z	\$175.00	JS-27000/04x-09-1/Z	\$478.00
JA-27000/04x-10-1/Z	\$188.00	JS-27000/04x-10-1/Z	\$537.00

## 3/8" NPT (#6 SAE) Side Ports

Aluminum / 270 Degree		Steel / 270 Degree	
JA-27000/06x-02-1/Z	\$68.00	JS-27000/06x-02-1/Z	\$212.00
JA-27000/06x-03-1/Z	\$94.00	JS-27000/06x-03-1/Z	\$283.00
JA-27000/06x-04-1/Z	\$103.00	JS-27000/06x-04-1/Z	\$327.00
JA-27000/06x-05-1/Z	\$113.00	JS-27000/06x-05-1/Z	\$348.00
JA-27000/06x-06-1/Z	\$132.00	JS-27000/06x-06-1/Z	\$367.00
JA-27000/06x-07-1/Z	\$152.00	JS-27000/06x-07-1/Z	\$404.00
JA-27000/06x-08-1/Z	\$174.00	JS-27000/06x-08-1/Z	\$462.00
JA-27000/06x-09-1/Z	\$192.00	JS-27000/06x-09-1/Z	\$499.00
JA-27000/06x-10-1/Z	\$205.00	JS-27000/06x-10-1/Z	\$544.00

## 1/2" NPT (#8 SAE) Side Ports

Aluminum / 270 Degree		Steel / 270 Degree	
JA-27000/08x-02-1/Z	\$74.00	JS-27000/08x-02-1/Z	\$229.00
JA-27000/08x-03-1/Z	\$101.00	JS-27000/08x-03-1/Z	\$309.00
JA-27000/08x-04-1/Z	\$112.00	JS-27000/08x-04-1/Z	\$338.00
JA-27000/08x-05-1/Z	\$141.00	JS-27000/08x-05-1/Z	\$367.00
JA-27000/08x-06-1/Z	\$163.00	JS-27000/08x-06-1/Z	\$394.00
JA-27000/08x-07-1/Z	\$196.00	JS-27000/08x-07-1/Z	\$450.00
JA-27000/08x-08-1/Z	\$209.00	JS-27000/08x-08-1/Z	\$507.00
JA-27000/08x-09-1/Z	\$224.00	JS-27000/08x-09-1/Z	\$561.00

## 3/4" NPT (#12 SAE) Side Ports

Aluminum / 270 Degree		Steel / 270 Degree	
JA-27000/12x-02-1/Z	\$99.00	JS-27000/12x-02-1/Z	\$250.00
JA-27000/12x-03-1/Z	\$136.00	JS-27000/12x-03-1/Z	\$338.00
JA-27000/12x-04-1/Z	\$174.00	JS-27000/12x-04-1/Z	\$412.00
JA-27000/12x-05-1/Z	\$210.00	JS-27000/12x-05-1/Z	\$487.00
JA-27000/12x-06-1/Z	\$246.00	JS-27000/12x-06-1/Z	\$574.00
JA-27000/12x-07-1/Z	\$284.00	JS-27000/12x-07-1/Z	\$657.00

## 1" NPT (#16 SAE) Side Ports

Aluminum / 270 Degree		Steel / 270 Degree	
JA-27000/16x-02-1/Z	\$125.00	JS-27000/16x-02-1/Z	\$291.00
JA-27000/16x-03-1/Z	\$170.00	JS-27000/16x-03-1/Z	\$405.00
JA-27000/16x-04-1/Z	\$238.00	JS-27000/16x-04-1/Z	\$465.00
JA-27000/16x-05-1/Z	\$266.00	JS-27000/16x-05-1/Z	\$561.00
JA-27000/16x-06-1/Z	\$310.00	JS-27000/16x-06-1/Z	\$670.00

\* Please Note: Junction Bar Manifolds are Non-Returnable

Note: x - End & Side Port Thread Code

P - NPT Threads

S - SAE Threads

BSPP, BSPT and Metric threads are also available, consult factory for price.

"Standard" Port Sizes and combinations are shown. Junction Manifolds with "Non-Standard" Port Sizes or combinations are available - Request Quote.



# Junction Bar Manifolds\* with NPT & SAE Ports - 270 Degree

## 1 1/2" NPT (#24 SAE) Side Ports

Aluminum / 270 Degree		Steel / 270 Degree	
JA-27000/24x-02-1/Z	\$228.00	JS-27000/24x-02-1/Z	\$465.00
JA-27000/24x-03-1/Z	\$314.00	JS-27000/24x-03-1/Z	\$579.00
JA-27000/24x-04-1/Z	\$407.00	JS-27000/24x-04-1/Z	\$847.00

## 1 1/4" NPT (#20 SAE) Side Ports

Aluminum / 270 Degree		Steel / 270 Degree	
JA-27000/20x-02-1/Z	\$165.00	JS-27000/20x-02-1/Z	\$350.00
JA-27000/20x-03-1/Z	\$232.00	JS-27000/20x-03-1/Z	\$472.00
JA-27000/20x-04-1/Z	\$323.00	JS-27000/20x-04-1/Z	\$604.00
JA-27000/20x-05-1/Z	\$355.00	JS-27000/20x-05-1/Z	\$739.00

\* Please Note: Junction Bar Manifolds are Non-Returnable

Note: x - End & Side Port Thread Code

P - NPT Threads

S - SAE Threads

BSPP, BSPT and Metric threads are also available, consult factory for price.

"Standard" Port Sizes and combinations are shown. Junction Manifolds with "Non-Standard" Port Sizes or combinations are available - Request Quote.

# Make the Connection with **magnaloy**

Whatever your Fluid Power Unit needs, Magnaloy has the products to keep you connected.



## Flexible Drive Couplings

Top-of-the-line magnesium couplings are lighter, yet stronger than either cast iron or aluminum. They also offer better corrosion resistance and easier handling.

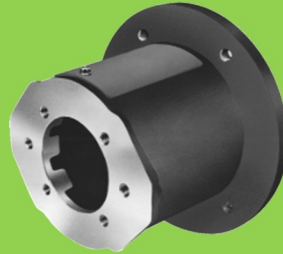


## Magnaloy Hydraulic Bar Manifolds & Accessories

Complete line of Inline Bar Manifolds, Subplates, Cover Plates, Valve Adaptors, Integrated Circuit Manifolds, and Accessories to make the design and fabrication of Hydraulic Circuitry simple and easy. Wide range of sizes include: D03, D05, D05H & D08 in aluminum and steel with ports available in SAE, NPTF, BSPP, and BSPT styles. Custom design and fabrication also available, consult factory.

## Accessories

Filler Breather Adaptors, Filler Breathers, Reservoir Flanges, Suction Strainers, Gauge Isolators, Liquid Level Gauges, Modular O-Ring Kits.



## Pump/Motor Mounts

Precision machined aluminum & custom steel pump/motor mounts directly connect the motor and pump while ensuring accurate shaft alignment and enclosing the coupling. Vertical and horizontal models readily available from stock.



## Rod End Couplers

Two models of accurately machined high tensile cylinder rod end alignment couplers offer 7° or 10° spherical and 1/8" parallel misalignment capabilities.



## PM 90 Couplings

Economical PM-90 Iron Powder Couplings have long lasting nitrile, hytel or urethane inserts. Double set screws give excellent gripping power.



## Magnaloy Reservoirs & Reservoir Accessories

Pressure Magnaloy offers a complete line of standard reservoirs and reservoir accessories. In addition, we offer custom reservoir fabrication to meet our customer specific needs. Reservoir accessories such as Clean Out Covers and SAE Couplings are available for the "do-it-yourself" reservoir manufacturer.



## Magnaloy Pressure Switch

Pressure Sensing switch capable of sensing up to two (2) separate pressures. Each sensor is externally independently adjustable from 200 to 4000 psi. Viton seals provide wide fluid compatibility range.

Magnaloy coupling company 170 N Industrial Hwy., Alpena, MI 49707 989-356-2186

A Division of Douville Johnston Corporation

Fax: 989-354-4190 www.magnaloy.com

**B**