



LIST PRICES
 Effective October 2, 2025
 Subject to change
 without notice

**Reservoirs
 Price List**

Product/Price Index

VERTICAL ECONO &
 DUAL RESERVOIRS..... 1

JIC RESERVOIRS 2

L SERIES RESERVOIRS..... 2

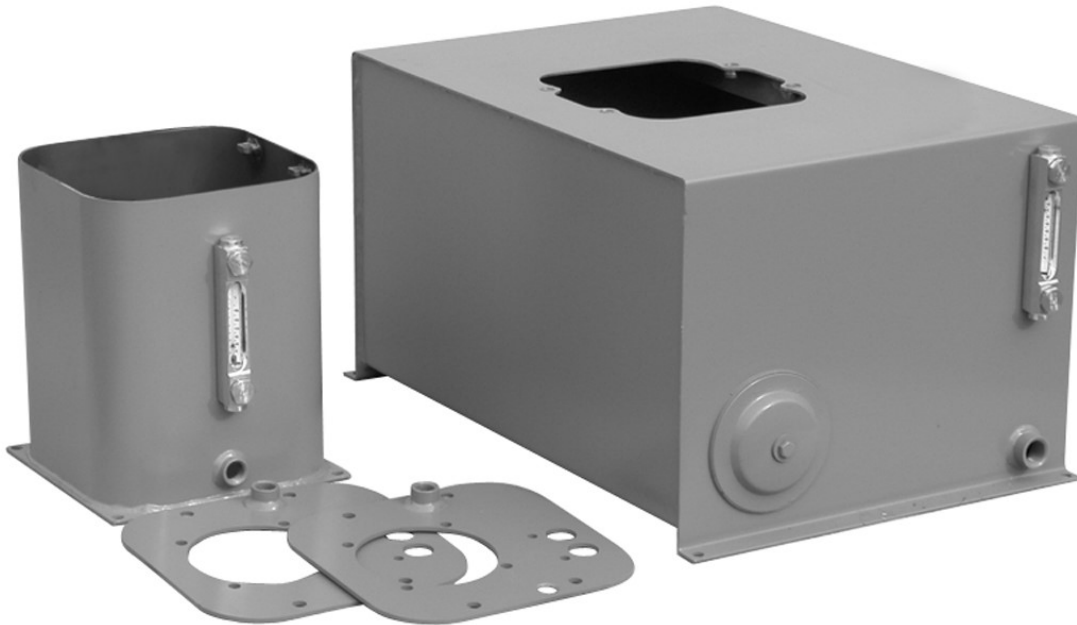
T SERIES RESERVOIRS 3

HORIZONTAL SERIES
 RESERVOIRS..... 4

DIN STYLE RESERVOIRS..... 4

DRIP PANS & STACKING
 MODULES FOR JIC
 RESERVOIRS..... 5

END COVERS..... 6



Vertical Style Reservoirs

Vertical Econo RVP Series Reservoirs				
Part Number	Gallon Cap.	Description	Approx Weight	List Price
RVP02	2	Tank w/o Cover	18#	\$203.00
RVP03	3	Tank w/o Cover	23#	\$201.00
RVP05	5	Tank w/o Cover	28#	\$243.00
RVP08	8	Tank w/o Cover	45#	\$373.00
RVP10	10	Tank w/o Cover	57#	\$391.00
RVP14	14	Tank w/o Cover	65#	\$440.00
RVP20	20	Tank w/o Cover	80#	\$518.00
RVP25	25	Tank w/o Cover	94#	\$655.00

Vertical RVS Series Reservoirs				
Part Number	Gallon Cap.	Description	Approx Weight	List Price
RVS05-1	5	Tank w/o Cover	30#	\$227.00
RVS10A-1	10	Tank w/o Cover	45#	\$275.00
RVS10B-2	10	Tank w/o Cover	50#	\$277.00
RVS10-2	10	Tank w/o Cover	65#	\$277.00
RVS20-2	20	Tank w/o Cover	65#	\$337.00
RVS20-3	20	Tank w/o Cover	80#	\$349.00
RVS30-2	30	Tank w/o Cover	85#	\$367.00
RVS30-3	30	Tank w/o Cover	100#	\$409.00
RVS40-3	40	Tank w/o Cover	120#	\$468.00

Dual Vertical RVS Series Reservoirs				
Part Number	Gallon Cap.	Description	Approx Weight	List Price
RDVS40-2	40	Tank w/o Cover	128#	\$877.00
RDVS60-2	60	Tank w/o Cover	179#	\$1,071.00
RDVS50-3	50	Tank w/o Cover	135#	\$887.00
RDVS60-3	60	Tank w/o Cover	154#	\$998.00

Vertical Econo RVP Series Reservoir Tops			
Part Number	Description	Approx Weight	List Price
RVPT-1	Cover w/Mtg Holes Only	5#	\$46.00
RVPT-2	Cover with 1/2" NPT Filler Breather Cutout	5#	\$57.00
RVPT-3	Cover with 1/2" NPT Filler Breather Cutout & 056C Mount Cutout	4#	\$68.00
RVPT-4	Cover with 1/2" NPT Filler Breather Cutout, 056C Mount Cutout & 1/2" NPT Full Coupling	4#	\$98.00

Vertical RVS Series Reservoir Tops			
Part Number	Description	Approx Weight	List Price
RVS1-T-1	Cover w/Mtg Holes Only		\$37.00
RVS1-T-2	Cover w/Filler Breather Cutout		\$63.00
RVS1-T-3/*	Cover w/Filler Breather Cutout & Mount Cutout A or B *		\$92.00
RVS1-T-4/*	Cover w/Filler Breather Cutout & Mount Cutout C *		\$92.00
RVS2-T-1	Cover w/Mtg Holes Only		\$52.00
RVS2-T-2	Cover w/Filler Breather Cutout		\$78.00
RVS2-T-3/*	Cover w/Filler Breather Cutout & Mount Cutout A or B *		\$106.00
RVS2-T-4/*	Cover w/Filler Breather Cutout & Mount Cutout C or D *		\$106.00
RVS3-T-1	Cover w/Mtg Holes Only		\$58.00
RVS3-T-2	Cover w/Filler Breather Cutout		\$86.00
RVS3-T-3/*	Cover w/Filler Breather Cutout & Mount Cutout A or B *		\$113.00
RVS3-T-4/*	Cover w/Filler Breather Cutout & Mount Cutout C or D *		\$113.00

* Mount Cutout Code M, see our Product Catalog, page 123.

A = 056 Vertical Mounting Option A

B = 056 Vertical Mounting Option B

C = 182 Vertical Mounting Option A

D = 182 Vertical Mounting Option B Add'l details in Pump/Motor Mount Catalog.

Reservoirs



JIC Style Reservoirs

RJIC**-FT (fixed top) Series Reservoirs				
Part Number	Gallon Cap.	Description	Approx Weight	List Price
RJIC010-FT	10	JIC Welded Top	80#	\$798.00
RJIC015-FT	15	JIC Welded Top	105#	\$805.00
RJIC020-FT	20	JIC Welded Top	125#	\$835.00
RJIC030-FT	30	JIC Welded Top	180#	\$871.00
RJIC040-FT	40	JIC Welded Top	190#	\$991.00
RJIC050-FT	50	JIC Welded Top	200#	\$1,115.00
RJIC060-FT	60	JIC Welded Top	240#	\$1,198.00
RJIC080-FT	80	JIC Welded Top	365#	\$1,430.00
RJIC100-FT	100	JIC Welded Top	375#	\$1,551.00
RJIC120-FT	120	JIC Welded Top	510#	\$1,852.00
RJIC150-FT	150	JIC Welded Top	525#	\$2,038.00
RJIC200-FT	200	JIC Welded Top	770#	\$2,386.00

JIC Reservoirs	
Part Number	List Price
RJIC010-RT	\$1,102.00
RJIC015-RT	\$1,110.00
RJIC020-RT	\$1,145.00
RJIC030-RT	\$1,181.00
RJIC040-RT	\$1,301.00
RJIC050-RT	\$1,425.00
RJIC060-RT	\$1,508.00
RJIC080-RT	\$1,740.00
RJIC100-RT	\$1,861.00
RJIC120-RT	\$2,162.00
RJIC150-RT	\$2,838.00
RJIC200-RT	\$3,186.00

JIC Reservoirs	
Part Number	List Price
RJIC010-RB	\$1,102.00
RJIC015-RB	\$1,110.00
RJIC020-RB	\$1,145.00
RJIC030-RB	\$1,181.00
RJIC040-RB	\$1,301.00
RJIC050-RB	\$1,425.00
RJIC060-RB	\$1,508.00
RJIC080-RB	\$1,740.00
RJIC100-RB	\$1,861.00
RJIC120-RB	\$2,162.00
RJIC150-RB	\$2,838.00
RJIC200-RB	\$3,186.00

* See page 124 in our Product Catalog for information on Removable Top and Baffle Options

L Style Reservoirs

RLC**-FT (fixed top) Series Reservoirs				
Part Number	Gallon Cap.	Description	Approx Weight	List Price
RLC010-FT	10	"L" Welded Top	150#	\$1,214.00
RLC020-FT	20	"L" Welded Top	240#	\$1,352.00
RLC030-FT	30	"L" Welded Top	260#	\$1,417.00
RLC045-FT	45	"L" Welded Top	325#	\$1,644.00
RLC060-FT	60	"L" Welded Top	350#	\$1,741.00
RLC080-FT	80	"L" Welded Top	430#	\$2,372.00
RLC100-FT	100	"L" Welded Top	495#	\$2,558.00
RLC120-FT	120	"L" Welded Top	530#	\$2,647.00
RLC150-FT	150	"L" Welded Top	605#	\$3,141.00
RLC200-FT	200	"L" Welded Top	770#	\$3,319.00

RLP**-RT (removable top) Series Reservoirs				
Part Number	Gallon Cap.	Description	Approx Weight	List Price
RLP010-RT	10	"L" Bolted Top	150#	\$1,504.00
RLP020-RT	20	"L" Bolted Top	240#	\$1,408.00
RLP030-RT	30	"L" Bolted Top	260#	\$1,476.00
RLP045-RT	45	"L" Bolted Top	325#	\$1,712.00
RLP060-RT	60	"L" Bolted Top	350#	\$1,741.00
RLP080-RT	80	"L" Bolted Top	430#	\$2,372.00
RLP100-RT	100	"L" Bolted Top	495#	\$2,558.00
RLP120-RT	120	"L" Bolted Top	530#	\$2,647.00
RLP150-RT	150	"L" Bolted Top	605#	\$3,141.00
RLP200-RT	200	"L" Bolted Top	770#	\$3,319.00

L Style Reservoirs

RLP**-HT (hinged top) Series Reservoirs				
Part Number	Gallon Cap.	Description	Approx Weight	List Price
RLP010-HT	10	"L" Hinged Top	135#	\$843.00
RLP020-HT	20	"L" Hinged Top	185#	\$1,041.00
RLP030-HT	30	"L" Hinged Top	240#	\$1,335.00
RLP045-HT	45	"L" Hinged Top	335#	\$1,635.00
RLP060-HT	60	"L" Hinged Top	375#	\$1,648.00
RLP080-HT	80	"L" Hinged Top	670#	\$2,512.00
RLP100-HT	100	"L" Hinged Top	715#	\$2,566.00
RLP120-HT	120	"L" Hinged Top	835#	\$3,481.00
RLP150-HT	150	"L" Hinged Top	940#	\$3,643.00
RLP200-HT	200	"L" Hinged Top	1125#	\$4,047.00

RLP**-PHT (partial hinged top) Series Reservoirs				
Part Number	Gallon Cap.	Description	Approx Weight	List Price
RLP080-PHT	80	"L" Part.Hinged Top	575#	\$2,534.00
RLP100-PHT	100	"L" Part.Hinged Top	720#	\$2,712.00
RLP120-PHT	120	"L" Part.Hinged Top	845#	\$3,643.00
RLP150-PHT	150	"L" Part.Hinged Top	945#	\$3,846.00
RLP200-PHT	200	"L" Part.Hinged Top	1135#	\$4,250.00

T Style Reservoirs

RTP**-HT (hinged top) Series Reservoirs				
Part Number	Gallon Cap.	Description	Approx Weight	List Price
RTP010-HT	10	"T" Hinged Top	173#	\$1,483.00
RTP020-HT	20	"T" Hinged Top	231#	\$1,509.00
RTP030-HT	30	"T" Hinged Top	300#	\$2,028.00
RTP045-HT	45	"T" Hinged Top	415#	\$2,028.00
RTP060-HT	60	"T" Hinged Top	481#	\$2,265.00
RTP080-HT	80	"T" Hinged Top	874#	\$4,095.00
RTP100-HT	100	"T" Hinged Top	880#	\$4,281.00
RTP120-HT	120	"T" Hinged Top	1054#	\$5,794.00
RTP150-HT	150	"T" Hinged Top	1150#	\$6,033.00
RTP200-HT	200	"T" Hinged Top	1383#	\$7,176.00
RTP300-HT	300	"T" Hinged Top	1737#	\$8,620.00
RTP400-HT	400	"T" Hinged Top	1953#	\$10,788.00

RTP**-PHT (partial hinged top) Series Reservoirs				
Part Number	Gallon Cap.	Description	Approx Weight	List Price
RTP080-PHT	80	"T" Part.Hinged Top	811#	\$4,425.00
RTP100-PHT	100	"T" Part.Hinged Top	871#	\$4,611.00
RTP120-PHT	120	"T" Part.Hinged Top	1013#	\$6,124.00
RTP150-PHT	150	"T" Part.Hinged Top	1183#	\$6,363.00
RTP200-PHT	200	"T" Part.Hinged Top	1402#	\$7,506.00

Reservoirs & Drip Pans



Horizontal Style Reservoirs

RHC**-FT (fixed top) Series Reservoirs				
Part Number	Gallon Cap.	Description	Approx Weight	List Price
RHC010-FT	10	Welded Top	50#	\$442.00
RHC020-FT	20	Welded Top	80#	\$546.00
RHC030-FT	30	Welded Top	100#	\$683.00
RHC040-FT	40	Welded Top	130#	\$765.00
RHC060-FT	60	Welded Top	150#	\$838.00

RHP**-RT (removable top) Series Reservoirs				
Part Number	Gallon Cap.	Description	Approx Weight	List Price
RHP010-RT	10	Removable Top	70#	\$457.00
RHP020-RT	20	Removable Top	80#	\$546.00
RHP030-RT	30	Removable Top	110#	\$683.00
RHP040-RT	40	Removable Top	135#	\$765.00

DIN Style Reservoirs

RDIN***AFA (front access) A Type Reservoirs				
Part Number	Gallon Cap.	Description	Approx Weight	List Price
RDIN020-AFA	20	Front Access	125#	\$970.00
RDIN030-AFA	30	Front Access	170#	\$1,106.00
RDIN040-AFA	40	Front Access	230#	\$1,243.00
RDIN060-AFA	60	Front Access	300#	\$1,301.00
RDIN080-AFA	80	Front Access	370#	\$1,561.00
RDIN100-AFA	100	Front Access	400#	\$2,072.00
RDIN120-AFA	120	Front Access	550#	\$2,260.00
RDIN150-AFA	150	Front Access	670#	\$2,666.00
RDIN200-AFA	200	Front Access	970#	\$3,423.00
RDIN300-AFA	300	Front Access	1150#	\$3,900.00

RDIN***BSA (Side access) B Type Reservoirs				
Part Number	Gallon Cap.	Description	Approx Weight	List Price
RDIN020-BSA	20	Side Access	140#	\$1,135.00
RDIN030-BSA	30	Side Access	185#	\$1,210.00
RDIN040-BSA	40	Side Access	250#	\$1,248.00
RDIN060-BSA	60	Side Access	320#	\$1,776.00
RDIN080-BSA	80	Side Access	400#	\$1,778.00
RDIN100-BSA	100	Side Access	430#	\$1,896.00
RDIN120-BSA	120	Side Access	580#	\$1,943.00
RDIN150-BSA	150	Side Access	700#	\$2,107.00
RDIN200-BSA	200	Side Access	1030#	\$3,012.00
RDIN300-BSA	300	Side Access	1200#	\$3,288.00

RDIN***CFA (front access, low profile) C Type Reservoirs				
Part Number	Gallon Cap.	Description	Approx Weight	List Price
RDIN020-CFA	20	Front Access	120#	\$891.00
RDIN030-CFA	30	Front Access	160#	\$1,067.00
RDIN040-CFA	40	Front Access	190#	\$1,083.00
RDIN060-CFA	60	Front Access	220#	\$1,200.00
RDIN080-CFA	80	Front Access	290#	\$1,515.00
RDIN100-CFA	100	Front Access	350#	\$1,642.00
RDIN120-CFA	120	Front Access	530#	\$2,117.00
RDIN150-CFA	150	Front Access	630#	\$2,681.00
RDIN200-CFA	200	Front Access	930#	\$3,025.00

RDIN***DSA (Side access, low profile) D Type Reservoirs				
Part Number	Gallon Cap.	Description	Approx Weight	List Price
RDIN020-DSA	20	Side Access	125#	\$1,195.00
RDIN030-DSA	30	Side Access	170#	\$1,206.00
RDIN040-DSA	40	Side Access	210#	\$1,295.00
RDIN060-DSA	60	Side Access	240#	\$1,493.00
RDIN080-DSA	80	Side Access	310#	\$2,268.00
RDIN100-DSA	100	Side Access	380#	\$2,496.00
RDIN120-DSA	120	Side Access	570#	\$2,746.00
RDIN150-DSA	150	Side Access	670#	\$3,021.00
RDIN200-DSA	200	Side Access	990#	\$3,323.00

Drip Pans for RJIC Reservoirs

RJDP** JIC Style Drip Pans w/Riser				
Part Number	Gallon Cap.	Description	Approx Weight	List Price
RJDP010	10	Drip Pan w/Riser	70#	\$491.00
RJDP015	15	Drip Pan w/Riser	70#	\$540.00
RJDP020	20	Drip Pan w/Riser	80#	\$563.00
RJDP030	30-50	Drip Pan w/Riser	105#	\$636.00
RJDP060	60	Drip Pan w/Riser	130#	\$657.00
RJDP080	80-100	Drip Pan w/Riser	145#	\$796.00
RJDP120	120-150	Drip Pan w/Riser	160#	\$897.00
RJDP200	200	Drip Pan w/Riser	200#	\$1,508.00

RJDP** JIC Style Drip Pans w/out Riser				
Part Number	Gallon Cap.	Description	Approx Weight	List Price
RJDP010	10	Drip Pan w/o Riser	40#	\$358.00
RJDP015	15	Drip Pan w/o Riser	40#	\$367.00
RJDP020	20	Drip Pan w/o Riser	50#	\$395.00
RJDP030	30-50	Drip Pan w/o Riser	65#	\$426.00
RJDP060	60	Drip Pan w/o Riser	85#	\$463.00
RJDP080	80-100	Drip Pan w/o Riser	100#	\$525.00
RJDP120	120-150	Drip Pan w/o Riser	110#	\$586.00
RJDP200	200	Drip Pan w/o Riser	145#	\$774.00

Stacking Modules for RJIC Reservoirs

RJSM** JIC Style Stacking Modules				
Part Number	Gallon Cap.	Description	Approx Weight	List Price
RJSM010	10	Stacking Module	65#	\$1,018.00
RJSM015	15	Stacking Module	70#	\$1,045.00
RJSM020	20	Stacking Module	70#	\$1,045.00
RJSM030	30-50	Stacking Module	80#	\$1,098.00
RJSM060	60	Stacking Module	100#	\$1,248.00
RJSM080	80	Stacking Module	110#	\$1,263.00
RJSM100	100	Stacking Module	110#	\$1,270.00
RJSM120	120-150	Stacking Module	115#	\$1,278.00
RJSM200	200	Stacking Module	125#	\$1,806.00

End Covers



Reservoir End Covers

Part Number	Dia.	Description	List
6 Inch End Covers			
REC06K	6"	Cover Assembly	\$44.00
12 Inch End Covers			
REC12KX	12"	End Cover Kit w/o Drain	\$61.00
REC12KN	12"	End Cover Kit w/NPT Drain	\$81.00
REC12CX	12"	End Cover w/o Drain	\$46.00
REC12CN	12"	End Cover w/NPT Drain	\$66.00
REC12KS	12"	End Cover Kit w/SAE Drain	call
REC12CS	12"	End Cover w/SAE Drain	call
14 Inch End Covers			
REC14KX	14"	End Cover Kit w/o Drain	\$70.00
REC14KN	14"	End Cover Kit w/NPT Drain	\$89.00
REC14CX	14"	End Cover w/o Drain	\$55.00
REC14CN	14"	End Cover w/NPT Drain	\$79.00
REC14KS	14"	End Cover Kit w/SAE Drain	call
REC14CS	14"	End Cover w/SAE Drain	call

Part Number	Dia.	Description	List
16 Inch End Covers			
REC16KX	16"	End Cover Kit w/o Drain	\$90.00
REC16KN	16"	End Cover Kit w/NPT Drain	\$108.00
REC16CX	16"	End Cover w/o Drain	\$75.00
REC16CN	16"	End Cover w/NPT Drain	\$93.00
REC16KS	16"	End Cover Kit w/SAE Drain	call
REC16CS	16"	End Cover w/SAE Drain	call
18 Inch End Covers			
REC18KX	18"	End Cover Kit w/o Drain	\$106.00
REC18KN	18"	End Cover Kit w/NPT Drain	\$118.00
REC18CX	18"	End Cover w/o Drain	\$90.00
REC18CN	18"	End Cover w/NPT Drain	\$109.00
REC18KS	18"	End Cover Kit w/SAE Drain	call
REC18CS	18"	End Cover w/SAE Drain	call

DIN Reservoir End Covers

Part Number	Dia.	Description	List
REC-M350K	350mm (13.78")	4 Bolt Cover Kit w/nuts & washers	\$231.00
REC-M475K	475mm (18.70")	6 Bolt Cover Kit w/nuts & washers	\$391.00

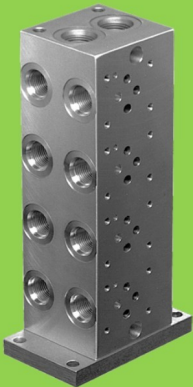
Make the Connection with **magnaloy**

Whatever your Fluid Power Unit needs, Magnaloy has the products to keep you connected.



Flexible Drive Couplings

Top-of-the-line magnesium couplings are lighter, yet stronger than either cast iron or aluminum. They also offer better corrosion resistance and easier handling.

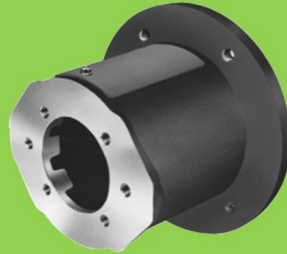


Magnaloy Hydraulic Bar Manifolds & Accessories

Complete line of Inline Bar Manifolds, Subplates, Cover Plates, Valve Adaptors, Integrated Circuit Manifolds, and Accessories to make the design and fabrication of Hydraulic Circuitry simple and easy. Wide range of sizes include: D03, D05, D05H & D08 in aluminum and steel with ports available in SAE, NPTF, BSPP, and BSPT styles. Custom design and fabrication also available, consult factory.

Accessories

Filler Breather Adaptors, Filler Breathers, Reservoir Flanges, Suction Strainers, Gauge Isolators, Liquid Level Gauges, Modular O-Ring Kits.



Pump/Motor Mounts

Precision machined aluminum & custom steel pump/motor mounts directly connect the motor and pump while ensuring accurate shaft alignment and enclosing the coupling. Vertical and horizontal models readily available from stock.



Rod End Couplers

Two models of accurately machined high tensile cylinder rod end alignment couplers offer 7° or 10° spherical and 1/8" parallel misalignment capabilities.



PM 90 Couplings

Economical PM-90 Iron Powder Couplings have long lasting nitrile, hytel or urethane inserts. Double set screws give excellent gripping power.



Magnaloy Reservoirs & Reservoir Accessories

Pressure Magnaloy offers a complete line of standard reservoirs and reservoir accessories. In addition, we offer custom reservoir fabrication to meet our customer specific needs. Reservoir accessories such as Clean Out Covers and SAE Couplings are available for the "do-it-yourself" reservoir manufacturer.



Magnaloy Pressure Switch

Pressure Sensing switch capable of sensing up to two (2) separate pressures. Each sensor is externally independently adjustable from 200 to 4000 psi. Viton seals provide wide fluid compatibility range.